

Pianta piano tipo

0 1 2 3 4 5m

ROMA - Tuscolano

Arch. Alberto Gatti

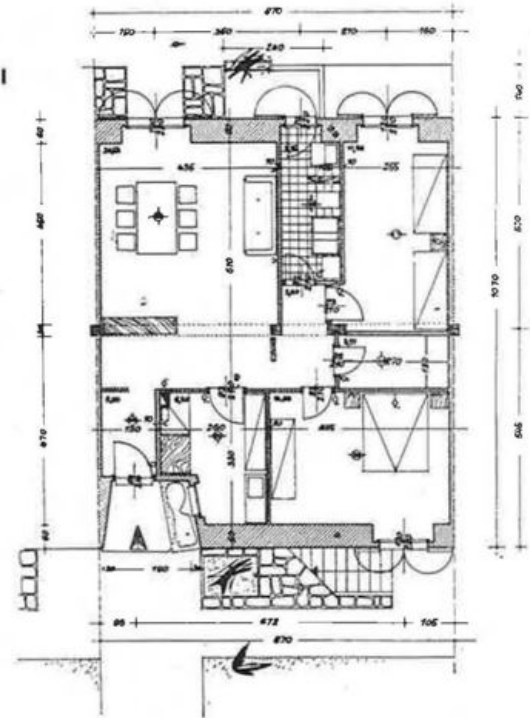


**ROMA - Tuscolano**

1-3 - Arch. Renato Venturi

4 - Arch. Amos Mainardi

5 - Arch. Franco Minissi





2



3



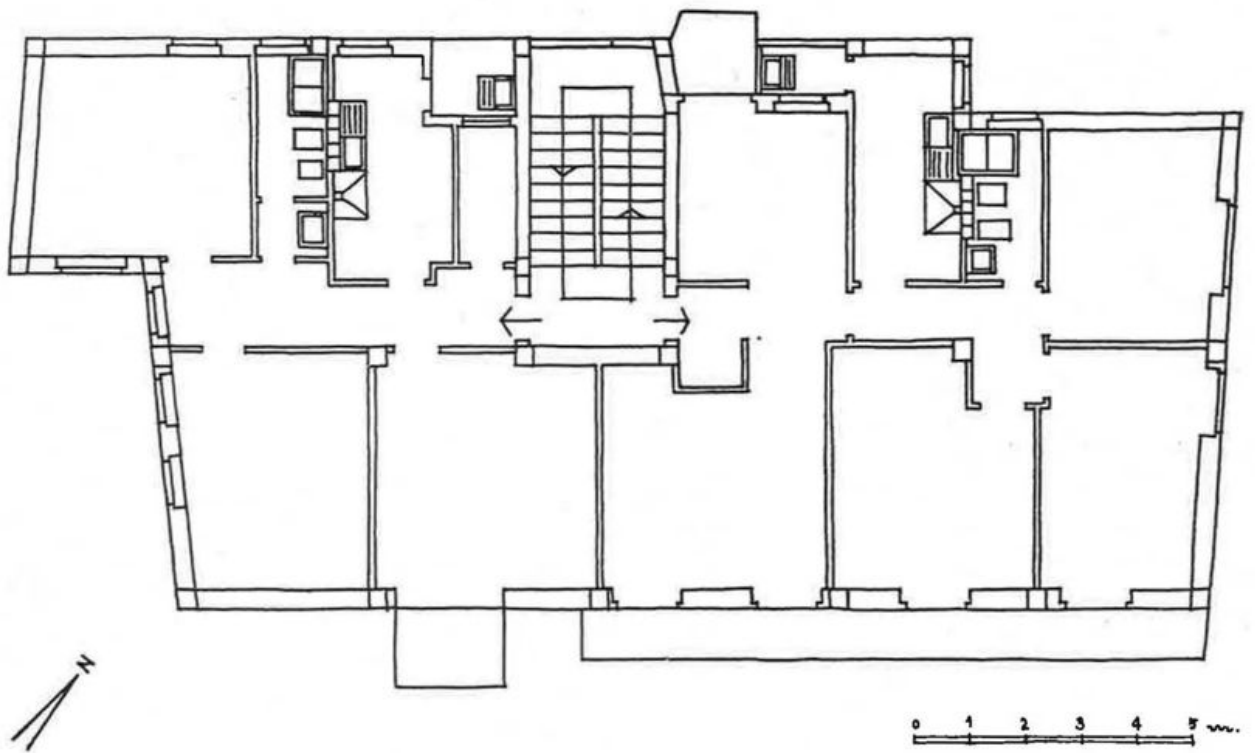
4

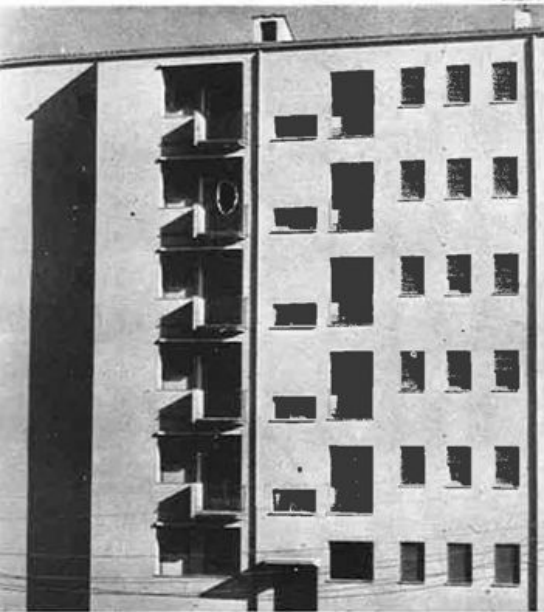


5

ROMA - Tuscolano

Ing. Giuseppe Nicolosi

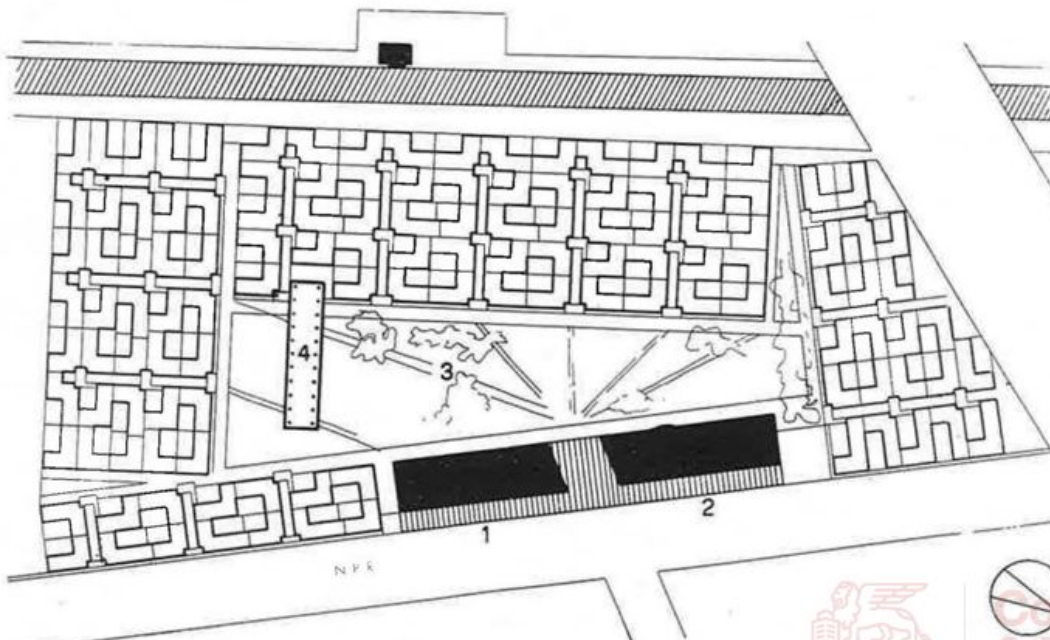
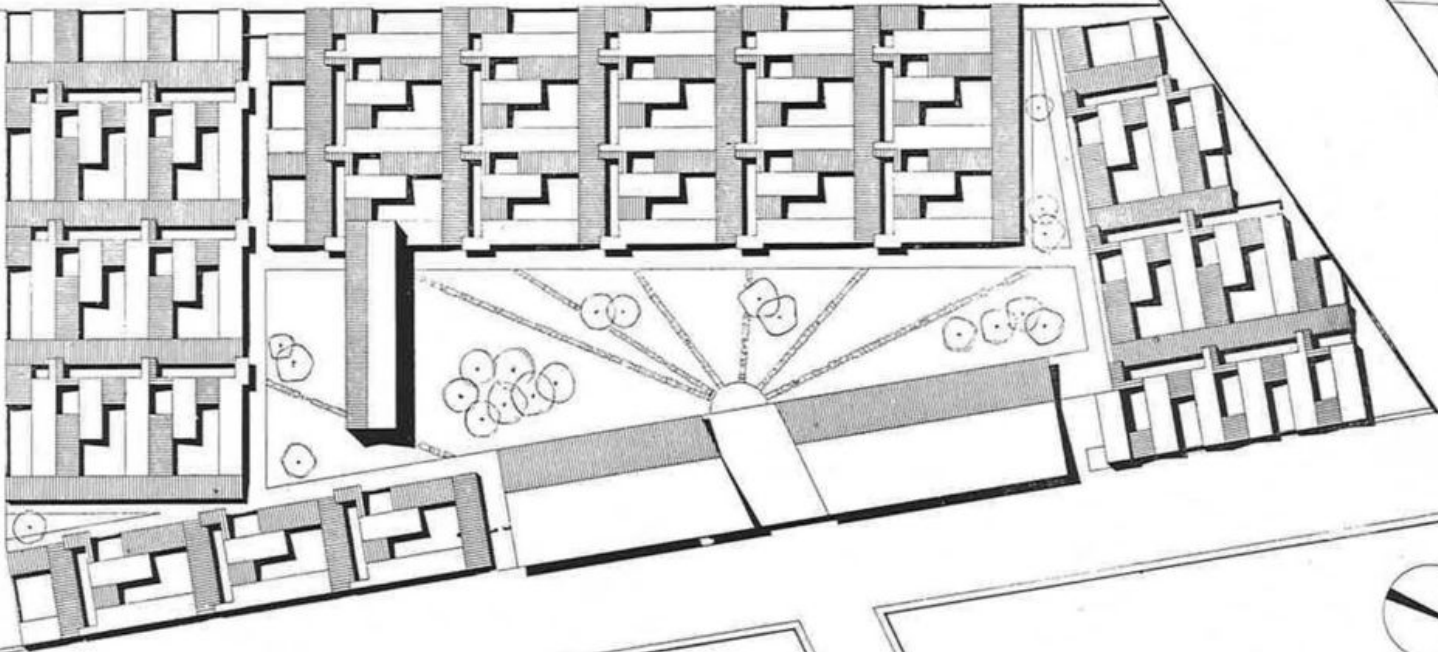




**ROMA - Unità di abitazione nel Quartiere Tuscolano**

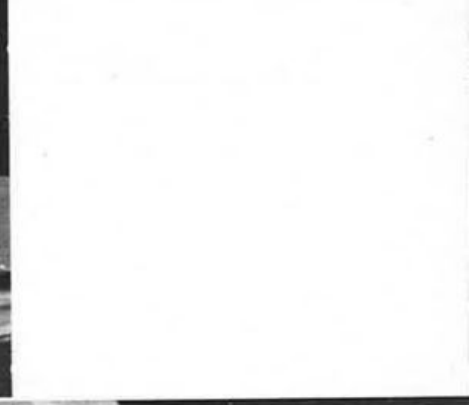
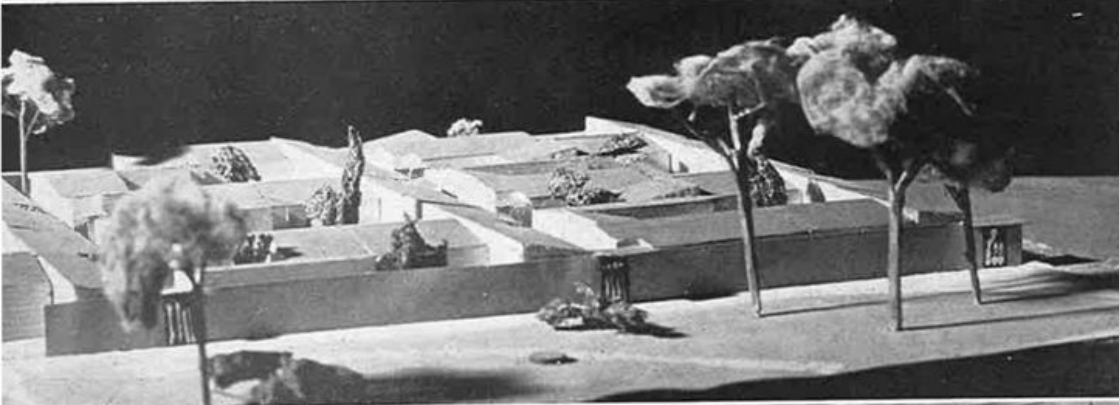
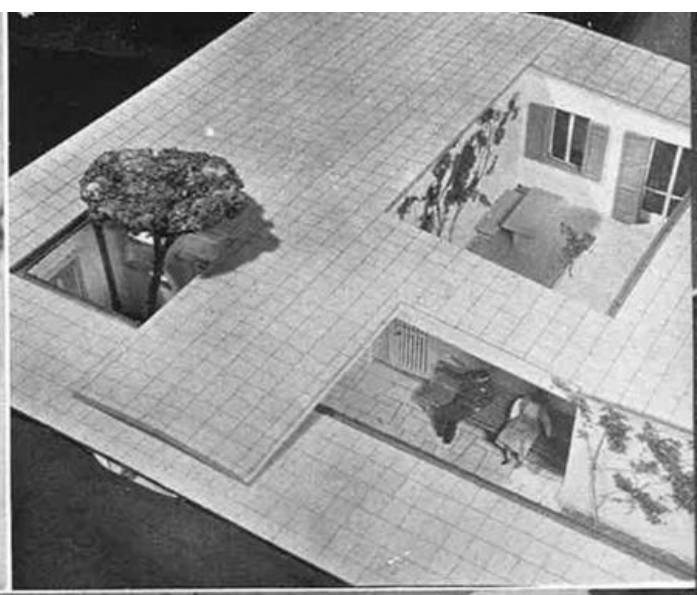
Arch. Adalberto Libera

ASSE FERROVIA ROMA - NAPOLI (VIA CASSINO)



**Servizi collettivi**

- 1) Negozi di uso giornaliero
- 2) Autorimesse
- 3) Zona verde comune
- 4) Casa a ballatoio su pilotis





ROMA - Quartiere residenziale al Tuscolano



ROMA - Quartiere residenziale al Tiburtino



**ROMA - Quartiere residenziale al Tiburtino**

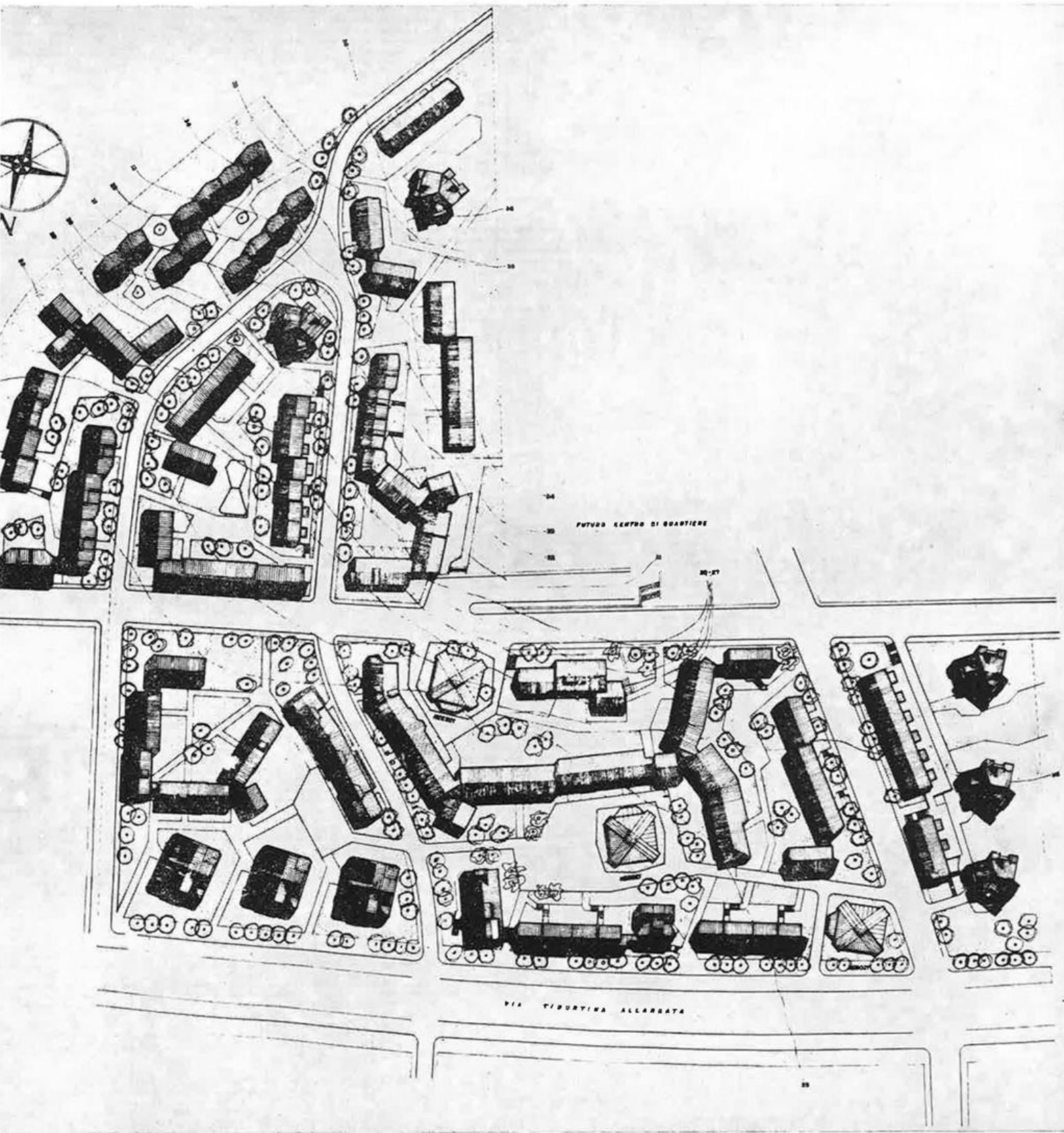
Architetti capigruppo: Ludovico Quaroni e Mario Ridolfi

Architetti collaboratori: Carlo Aymonino, Carlo Chiarini, Mario Fiorentino, Federico Gorio, Maurizio Lanza, Sergio Lenci, Piero Lugli, Carlo Melograni, Giancarlo Menichetti, Michele Valori



Servizi collettivi  
1) Negozi





Planimetria generale

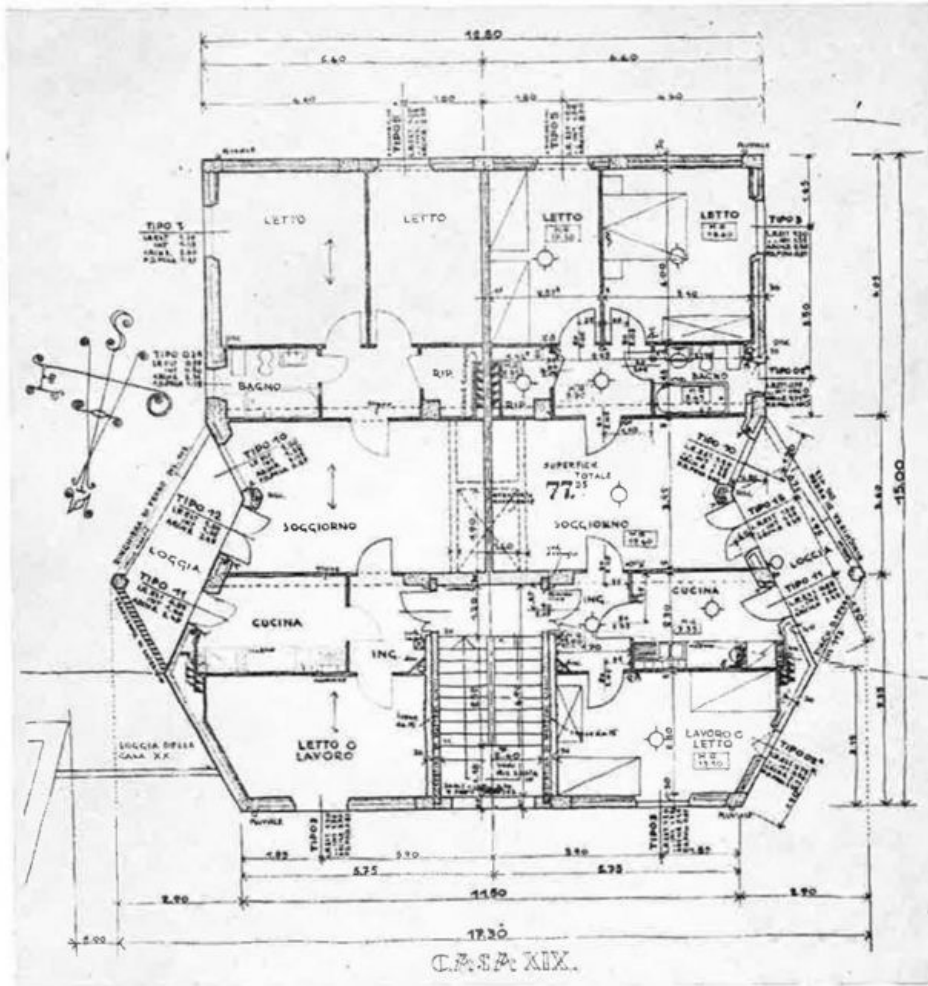


**ROMA - Tiburtino**

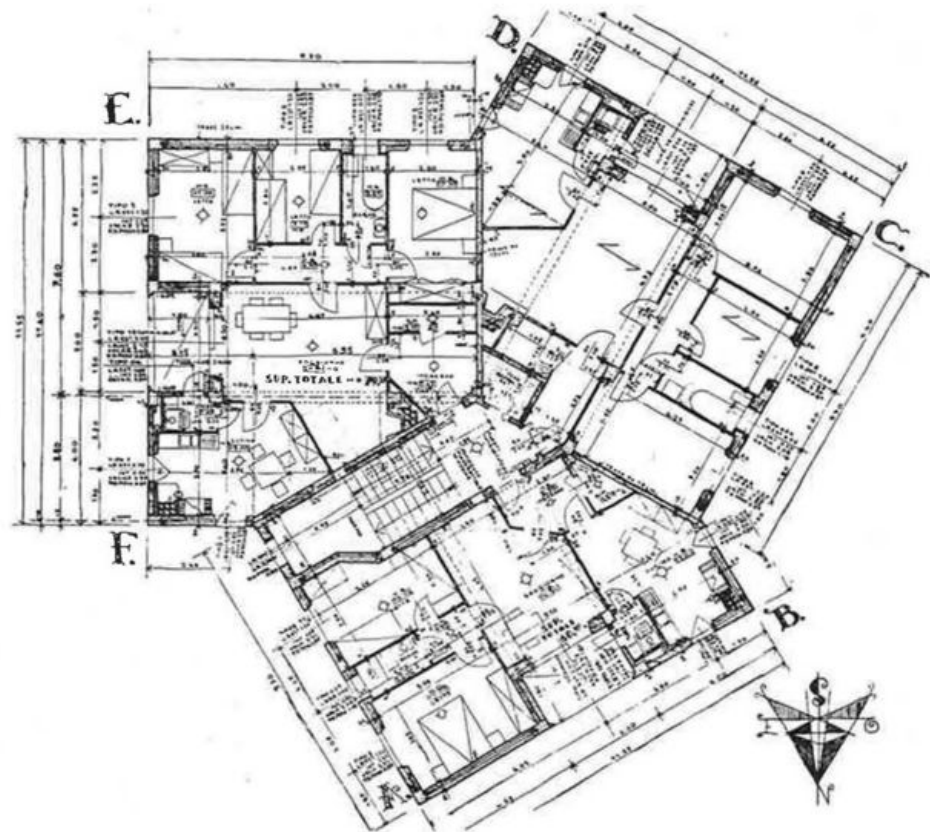
Ing. Federico Gorio







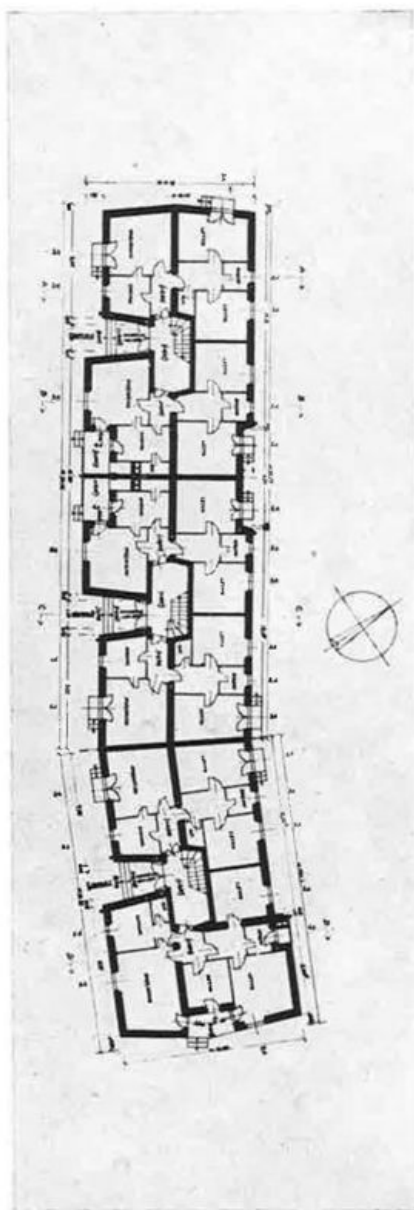
ROMA - Tiburtino  
 Pianta di un edificio  
 Arch. Mario Ridolfi



ROMA - Tiburtino  
 Pianta di un edificio  
 Arch. Mario Ridolfi



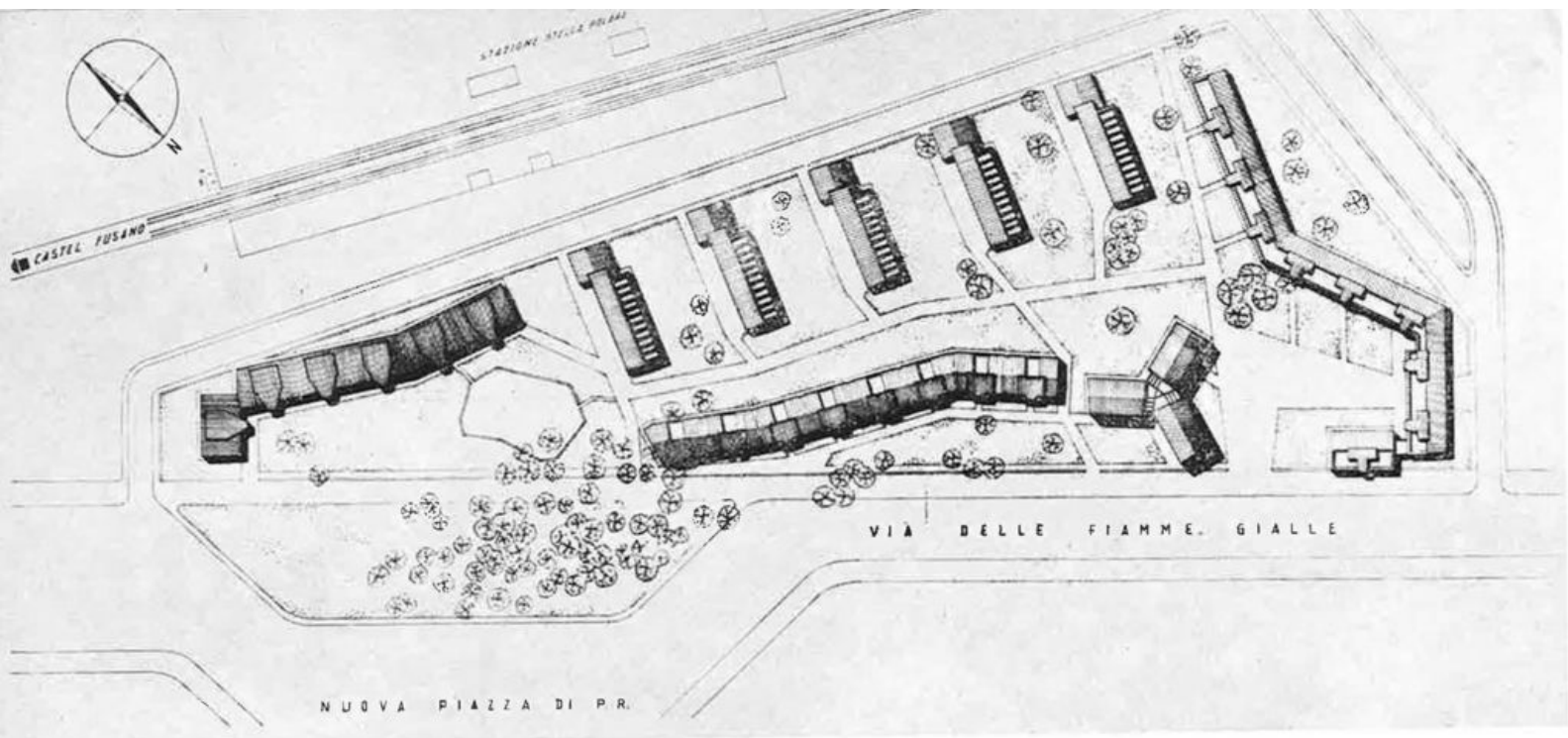
**ROMA - Tiburtino**  
Ing. Federico Gorio



Pianta di un edificio

Arch. Piero Maria Lugli  
Arch. Michele Valori





Edificio dell'Arch. Roberto Nicotri

**ROMA - Unità residenziale in Ostia**

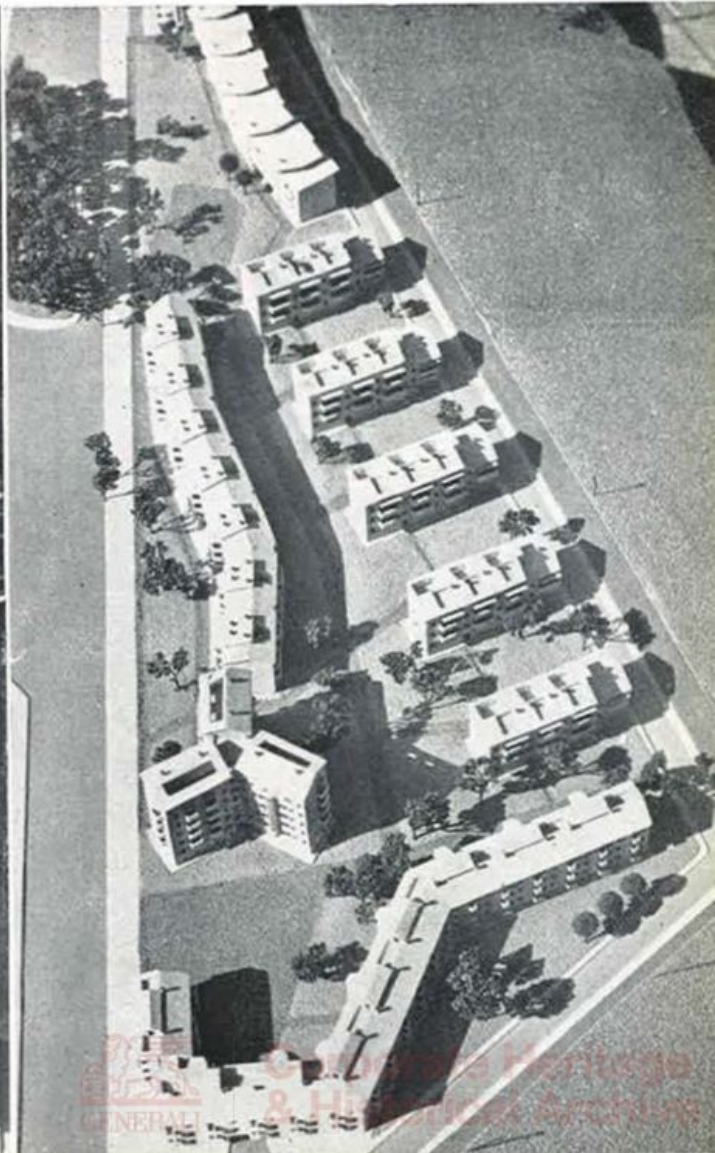
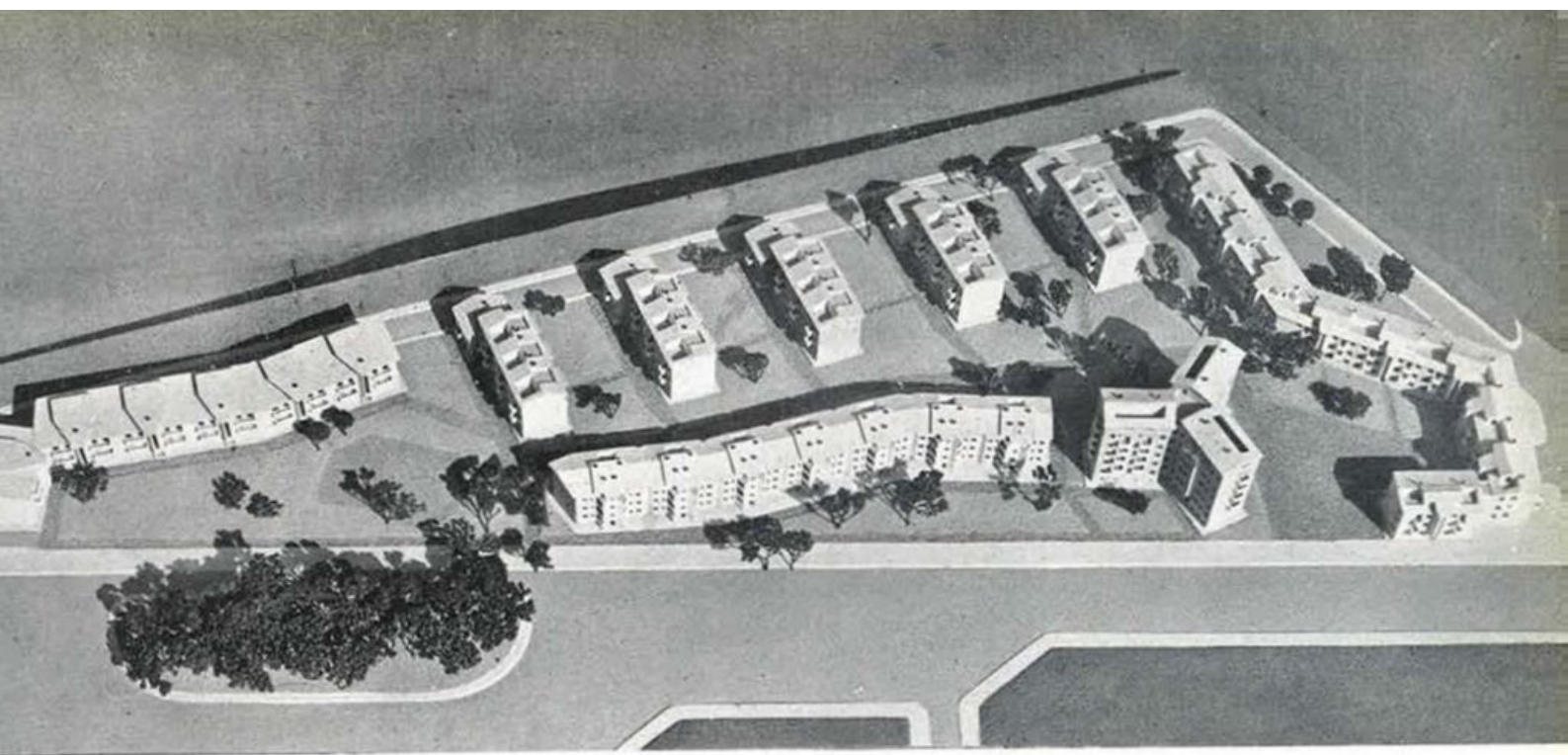
Progettazione urbanistica

degli Architetti Mario De Renzi e Saverio Muratori

Edificio dell'Arch. Cesare Ligini



**Corporate Heritage  
& Historical Archive**



**ROMA - Ostia**

1-2 - Arch. Cesare Ligini

3-5 - Arch. Roberto Nicolini



5

1



3



4

2



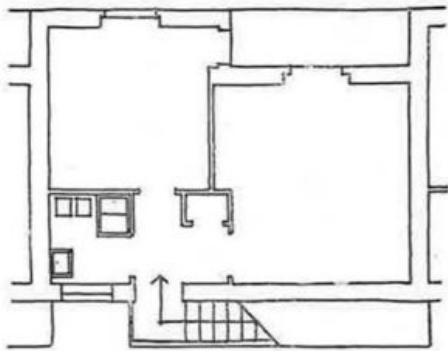
**FRASCATI**

Arch. Roberto Nicolini





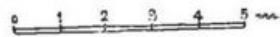
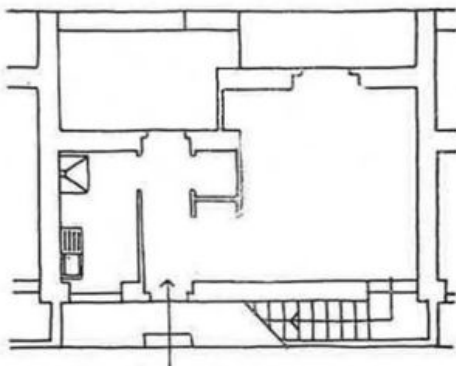
Pianta primo piano



1-3 - **APRILIA**  
Arch. Ezio Caizzi

4 - **APRILIA**  
Arch. Giuseppina Franzi

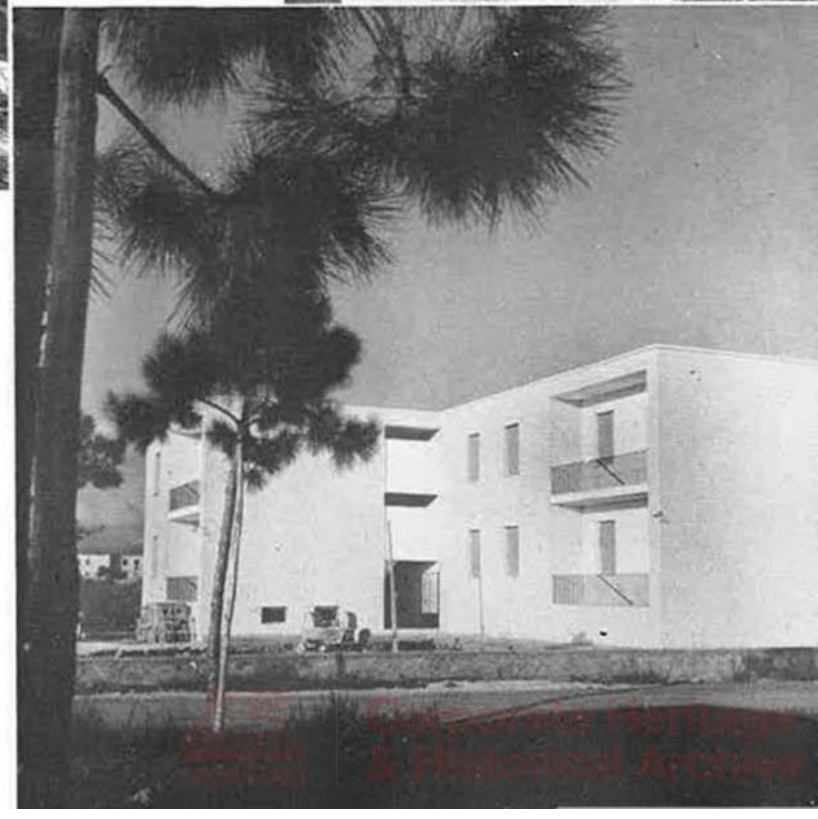
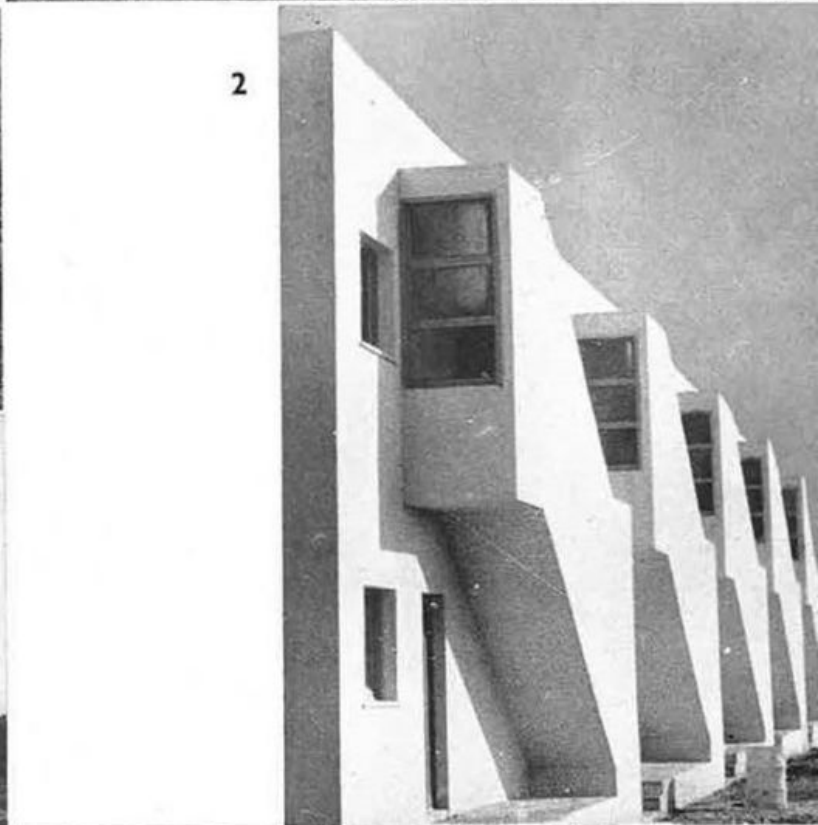
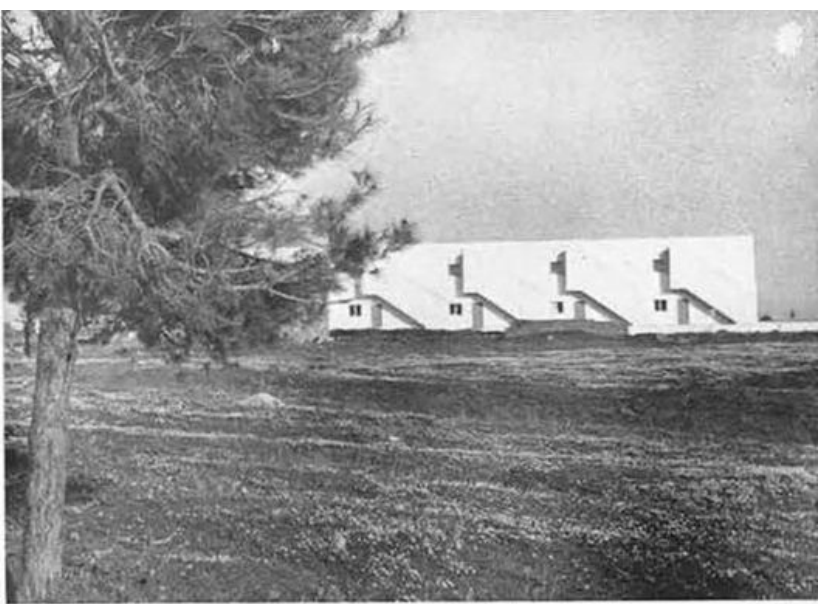
5 - **FORMIA**  
Arch. Ezio Caizzi



3

Pianta piano terreno

6 - **ITRI**  
Arch. Mariano Pallottini



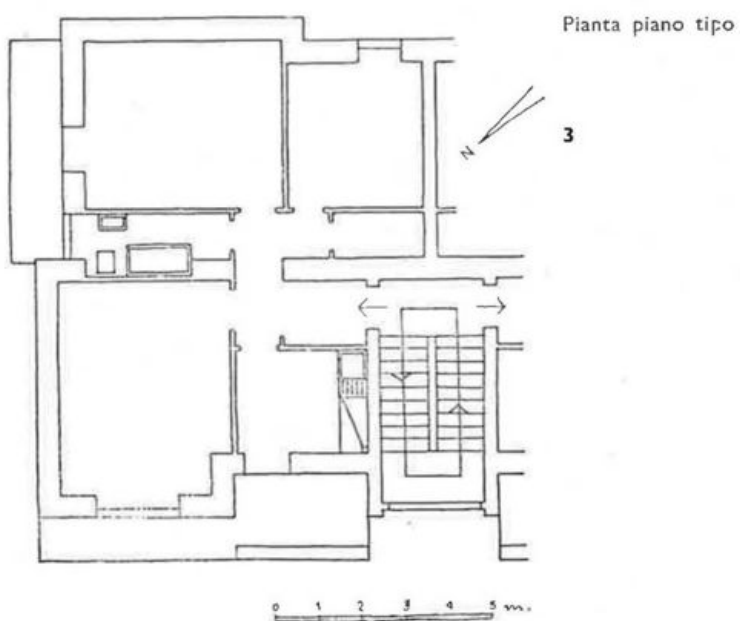
1-3 - **BOLSENA (Viterbo)**

Arch. Torquato Terracina

4 - **MONTEROTONDO SCALO (Roma)**

5 - **ALBANO LAZIALE**

Arch. Roberto Nicolini





1



2



4



5

1-3 - **BUSSI SUL TIRINO (Pescara)**

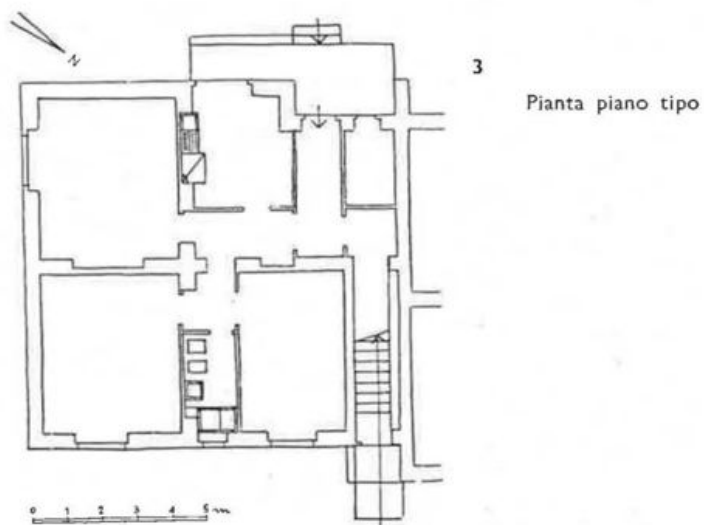
Arch. Eugenio Montuori

4 - **AVEZZANO**

Arch. Ezio Caizzi

5 - **CHIETI**

Arch. Venturino Ventura





4

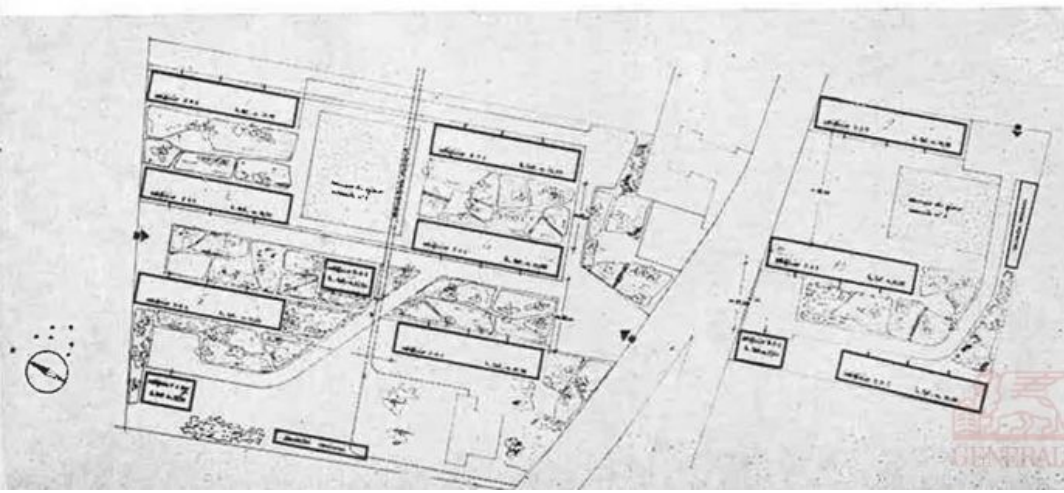


2

5

**NAPOLI - Unità d'abitazione a Barra**

Arch. Carlo Cocchia



Planimetria generale



NAPOLI - Unità d'abitazione a Barra





NAPOLI - Unità d'abitazione a Capodimonte

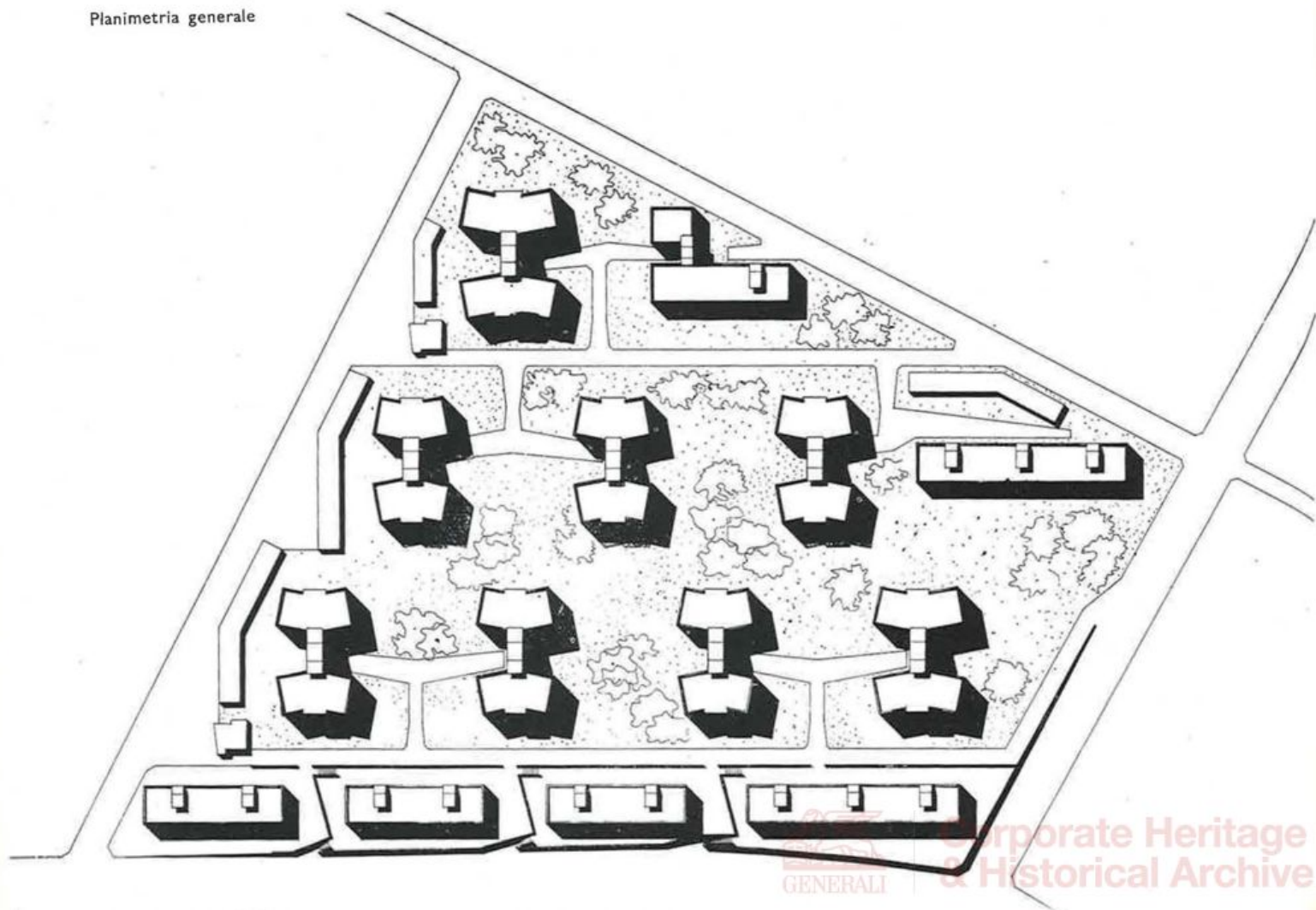


Corporate Heritage  
& Historical Archive

**NAPOLI - Unità d'abitazione a Capodimonte**

Arch. Giulio De Luca  
Arch. Raffaello Salvatori

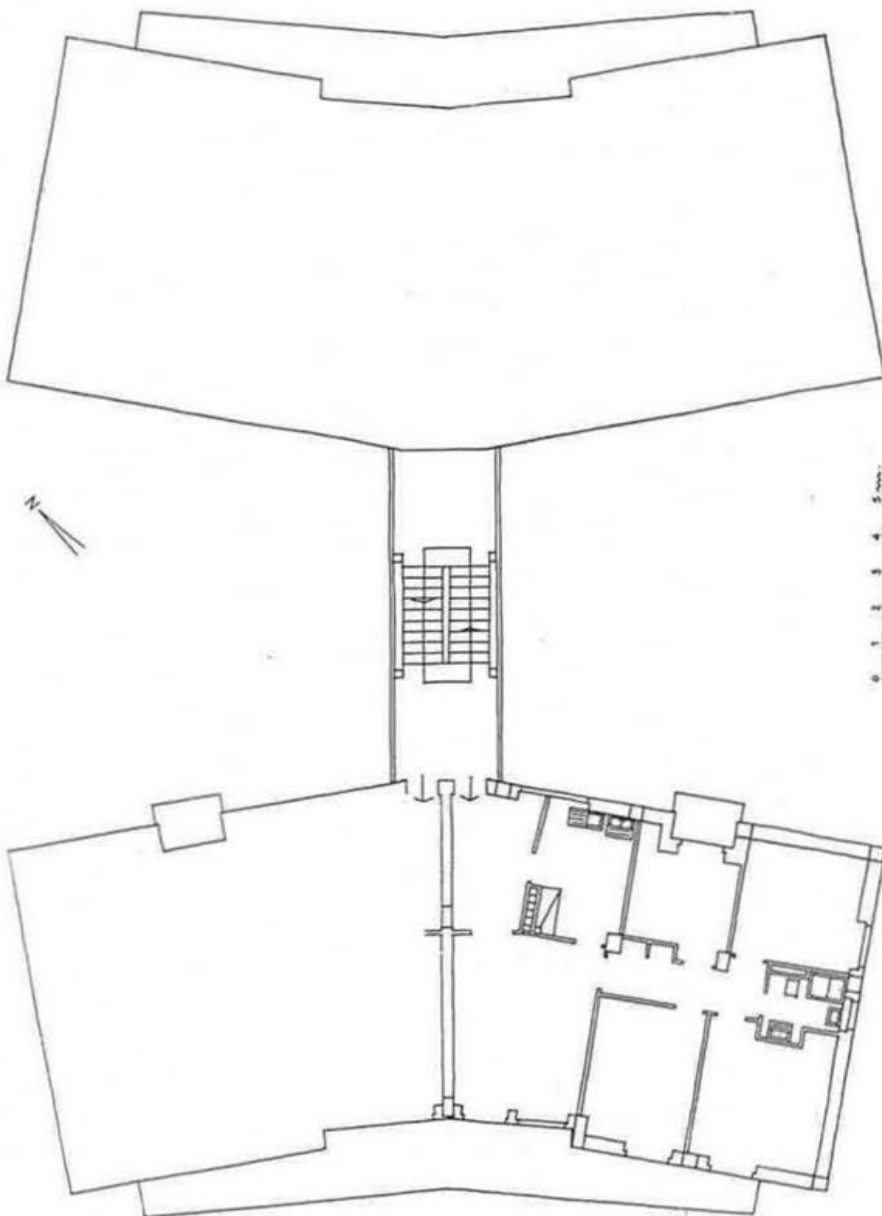
Planimetria generale





**NAPOLI - Unità d'abitazione a Capodimonte**

Arch. Giulio De Luca  
Arch. Raffaello Salvatori







**NAPOLI - Unità d'abitazione  
a Capodichino**



**Napoli - Unità d'abitazione a Capodichino**

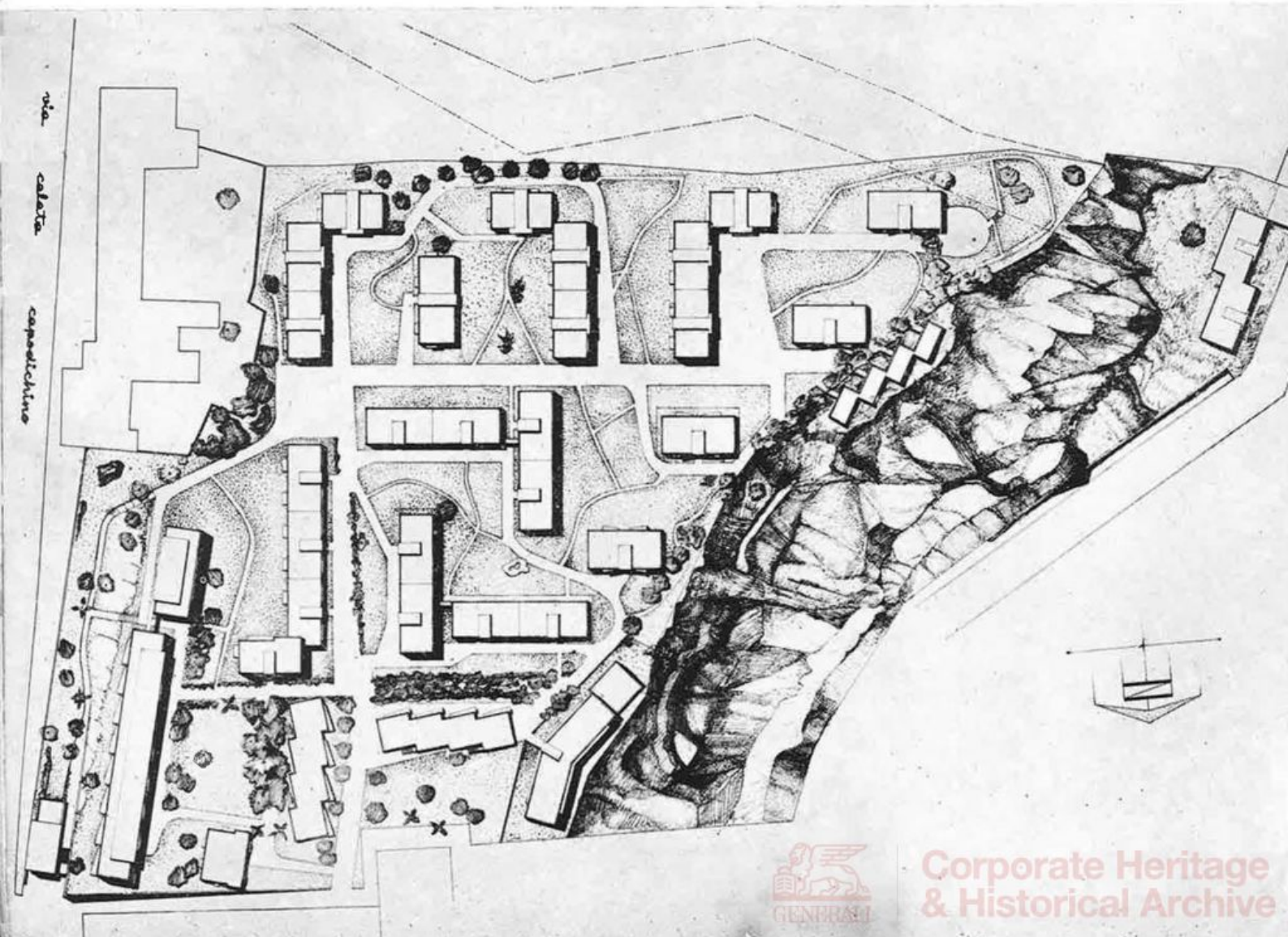


**Corporate Heritage  
& Historical Archive**

**NAPOLI - Unità d'abitazione a Capodichino**

Arch. Stefania Filo Speziale

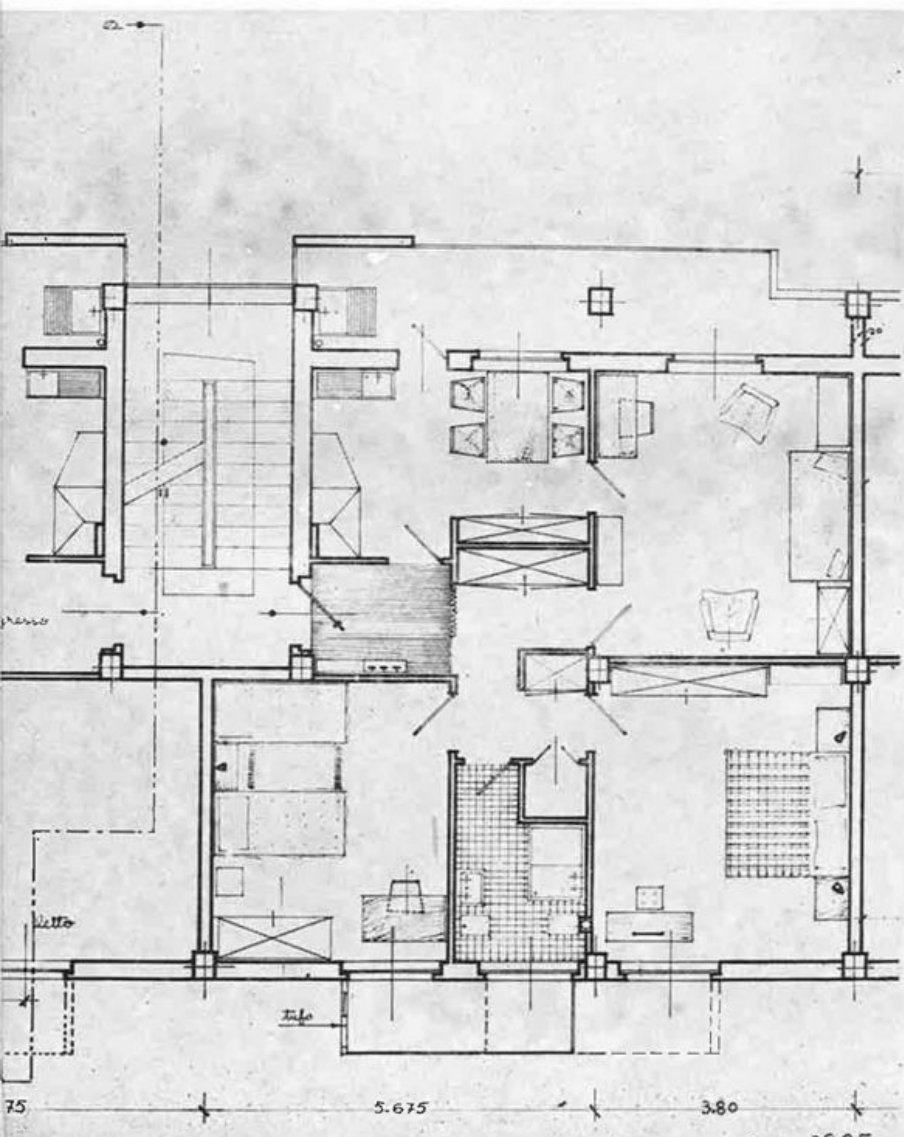
Planimetria generale





**NAPOLI - Unità d'abitazione a Capodichino**

Arch. Stefania Filo Speciale



Pianta edificio tipo



Corporate Heritage  
& Historical Archive



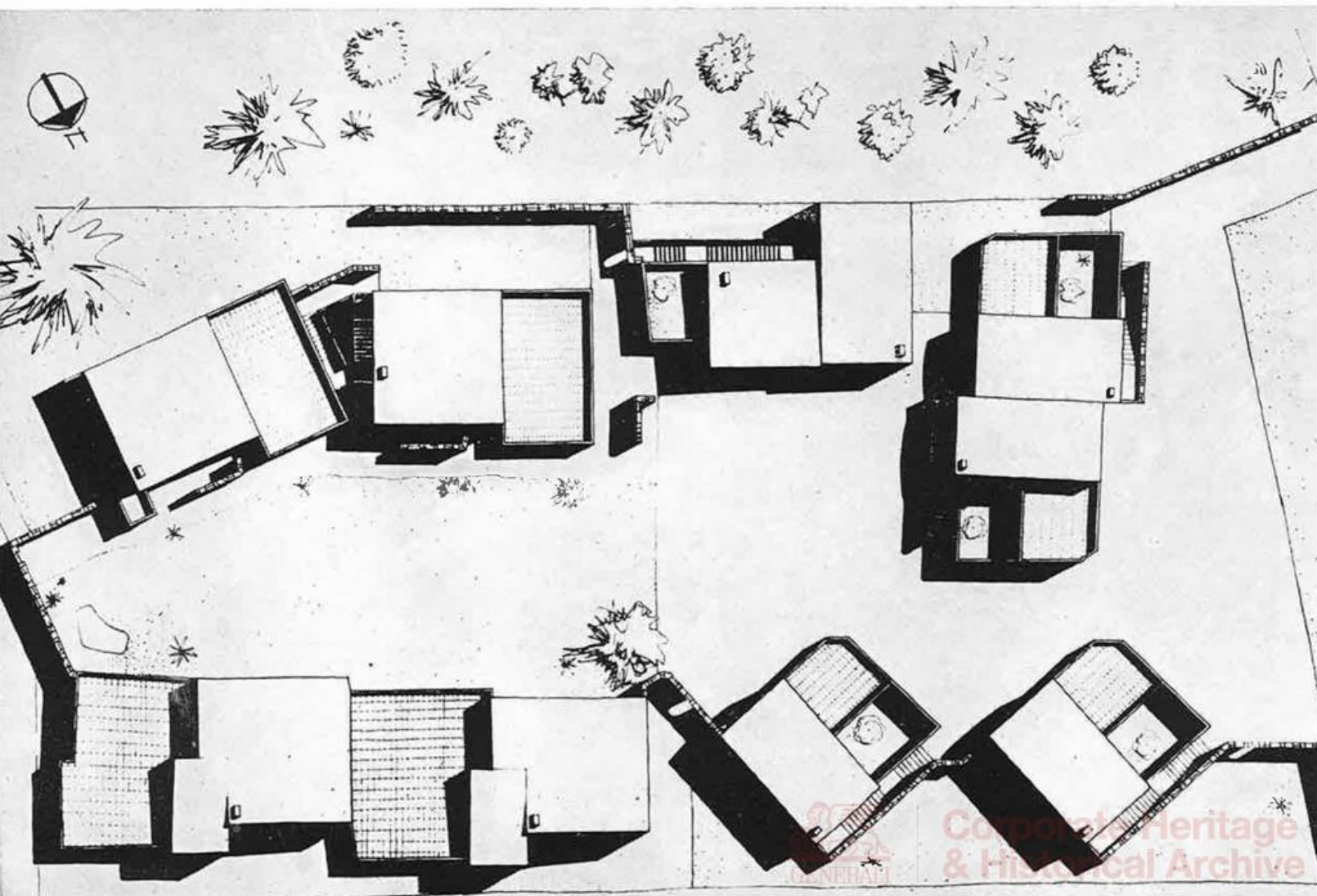
**NAPOLI** - Arch. Mario Rispoli

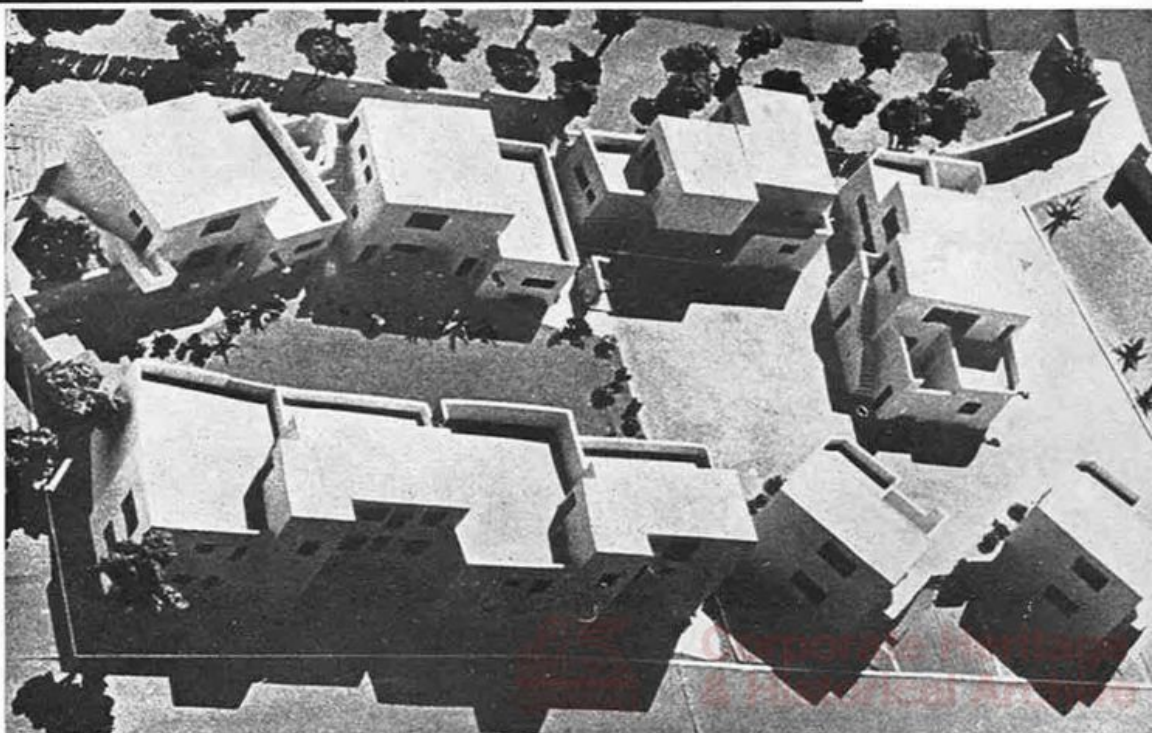
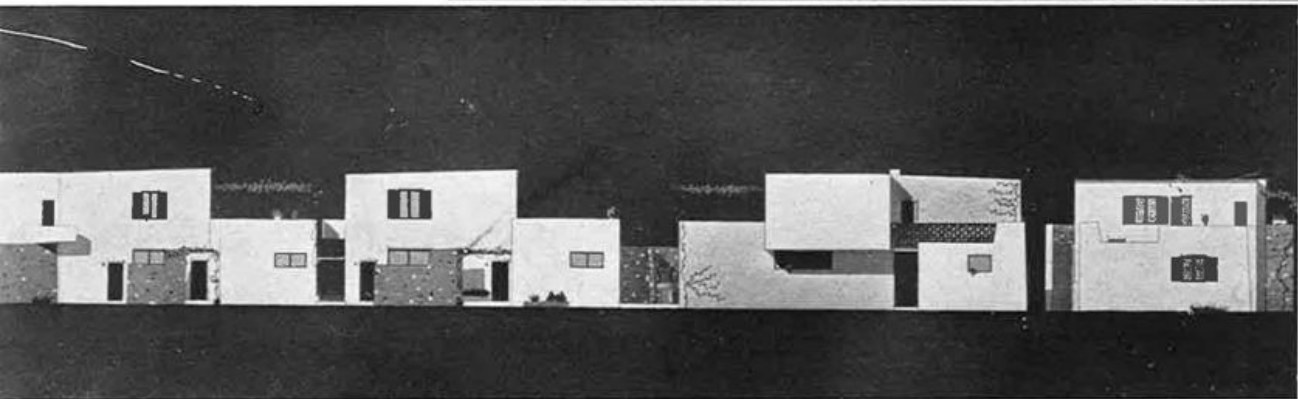


Corporate Heritage  
& Historical Archive

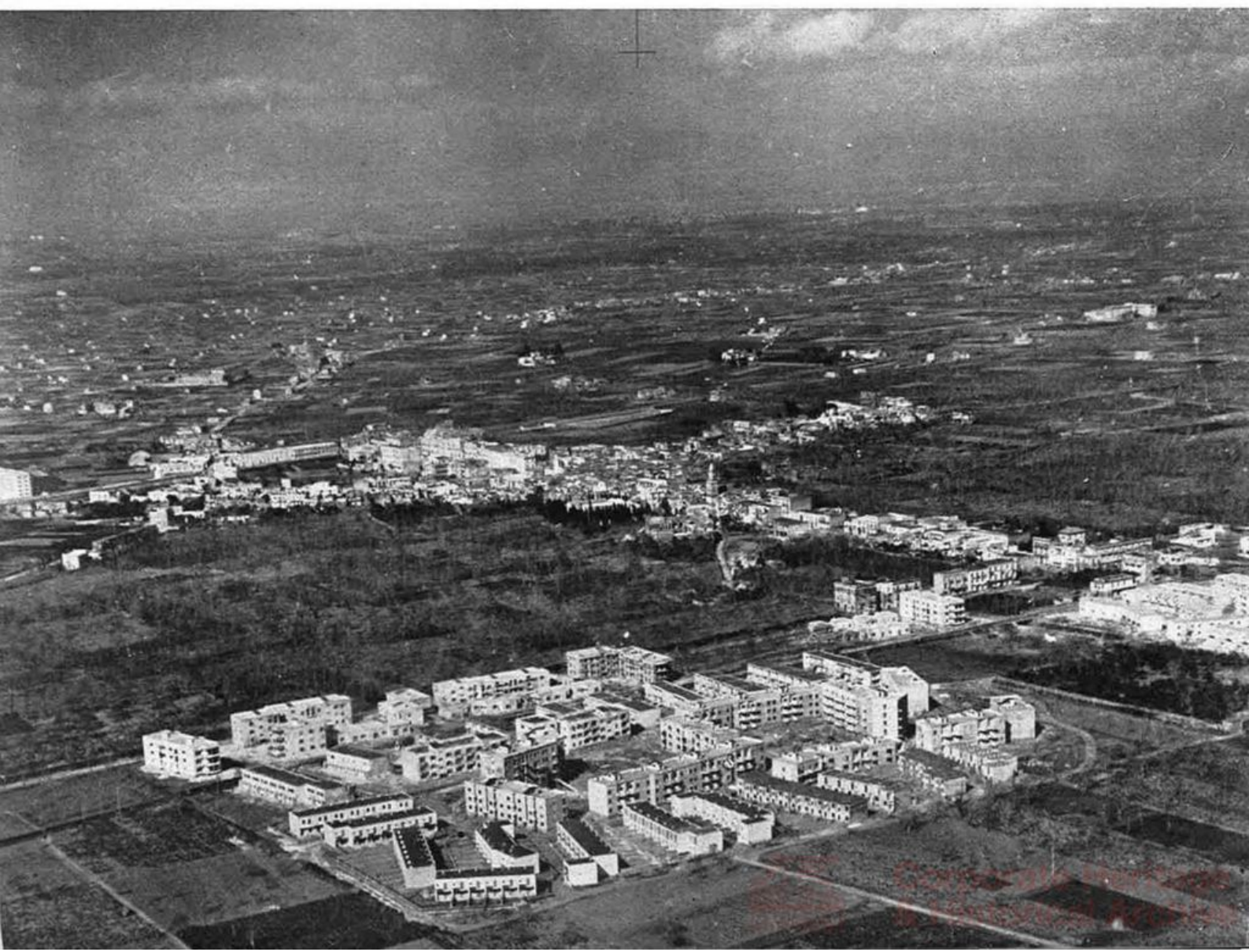
CAPRI

Arch. Rosanna Bucchi





NAPOLI - Quartiere residenziale a Ponticelli





Corporate Heritage  
& Historical Archive

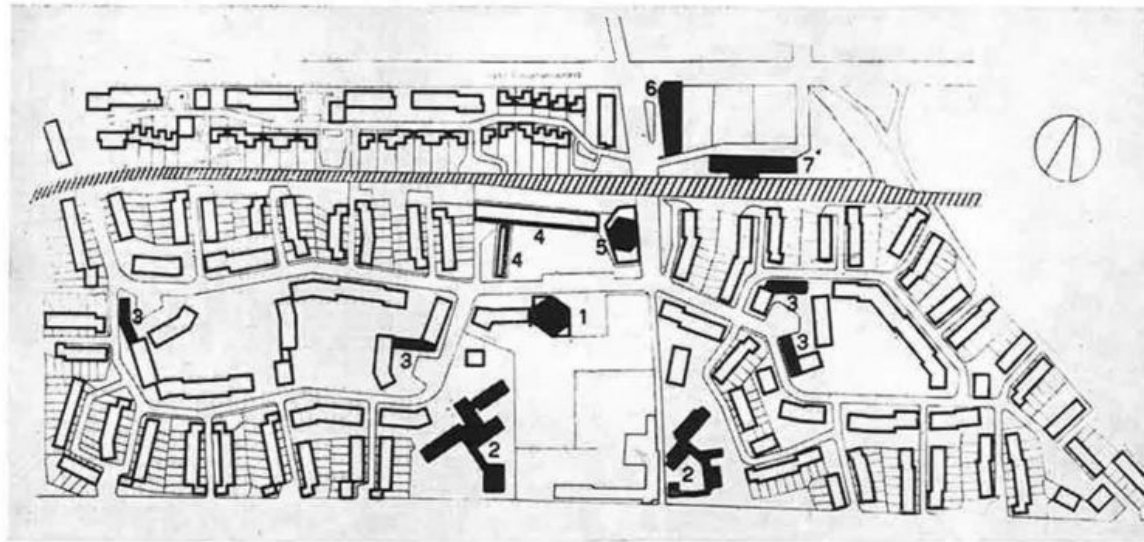
**NAPOLI - Quartiere residenziale a Ponticelli**

Progetto urbanistico d'ufficio

**Servizi collettivi**

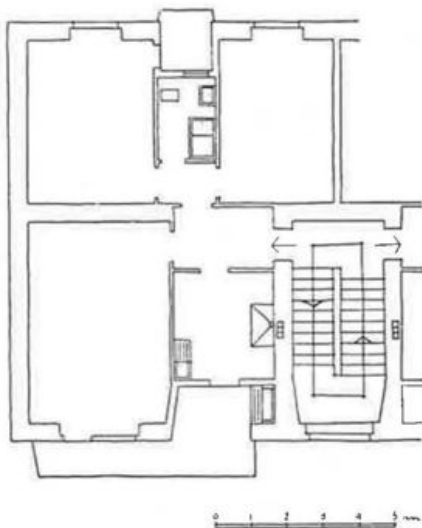
- 1) Chiesa e annessi
- 2) Scuola elementare e asilo
- 3) Negozi di uso quotidiano
- 4) Negozi di uso saltuario
- 5) Cinema
- 6) Stazione di servizio
- 7) Stazione ferroviaria esistente

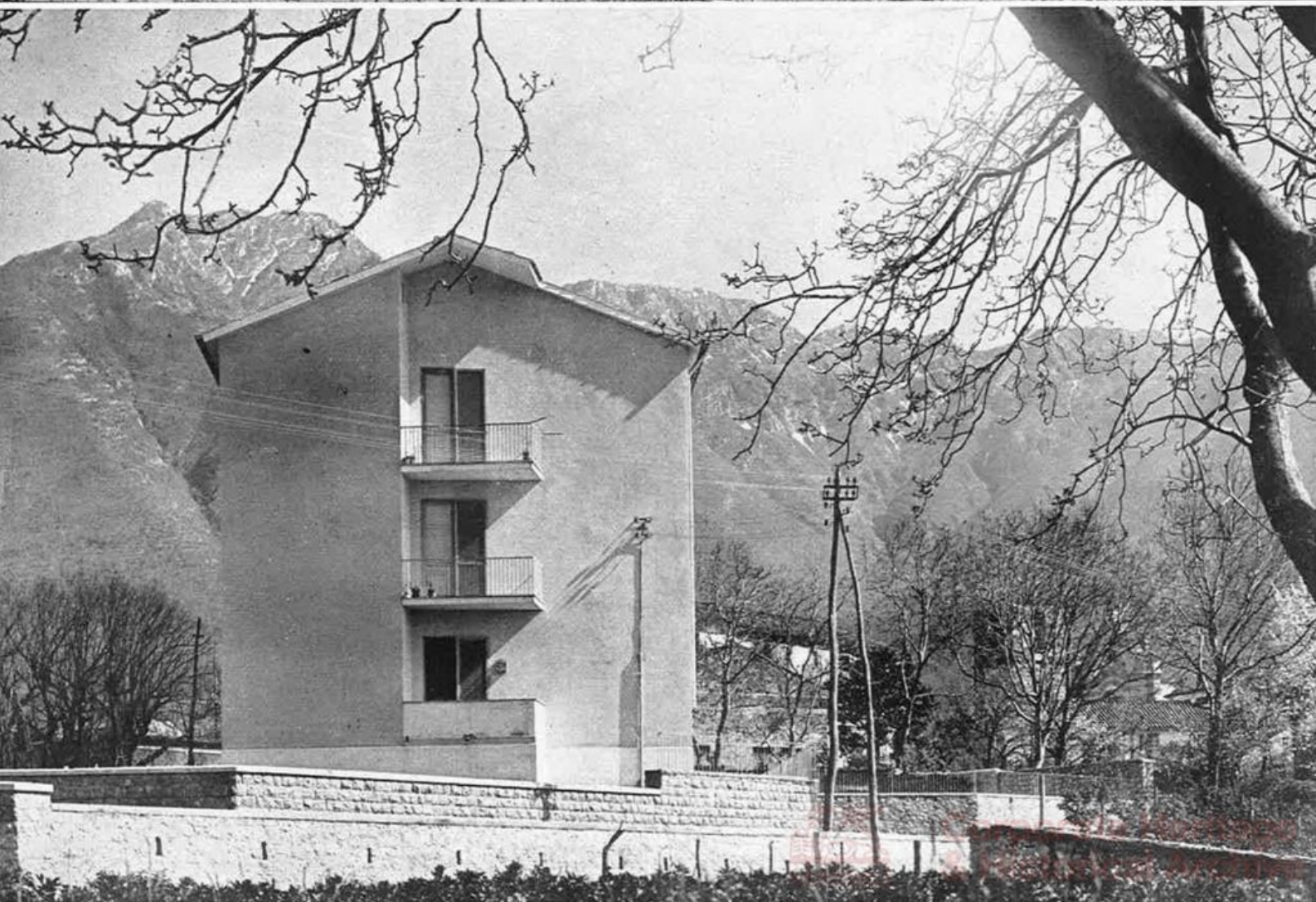
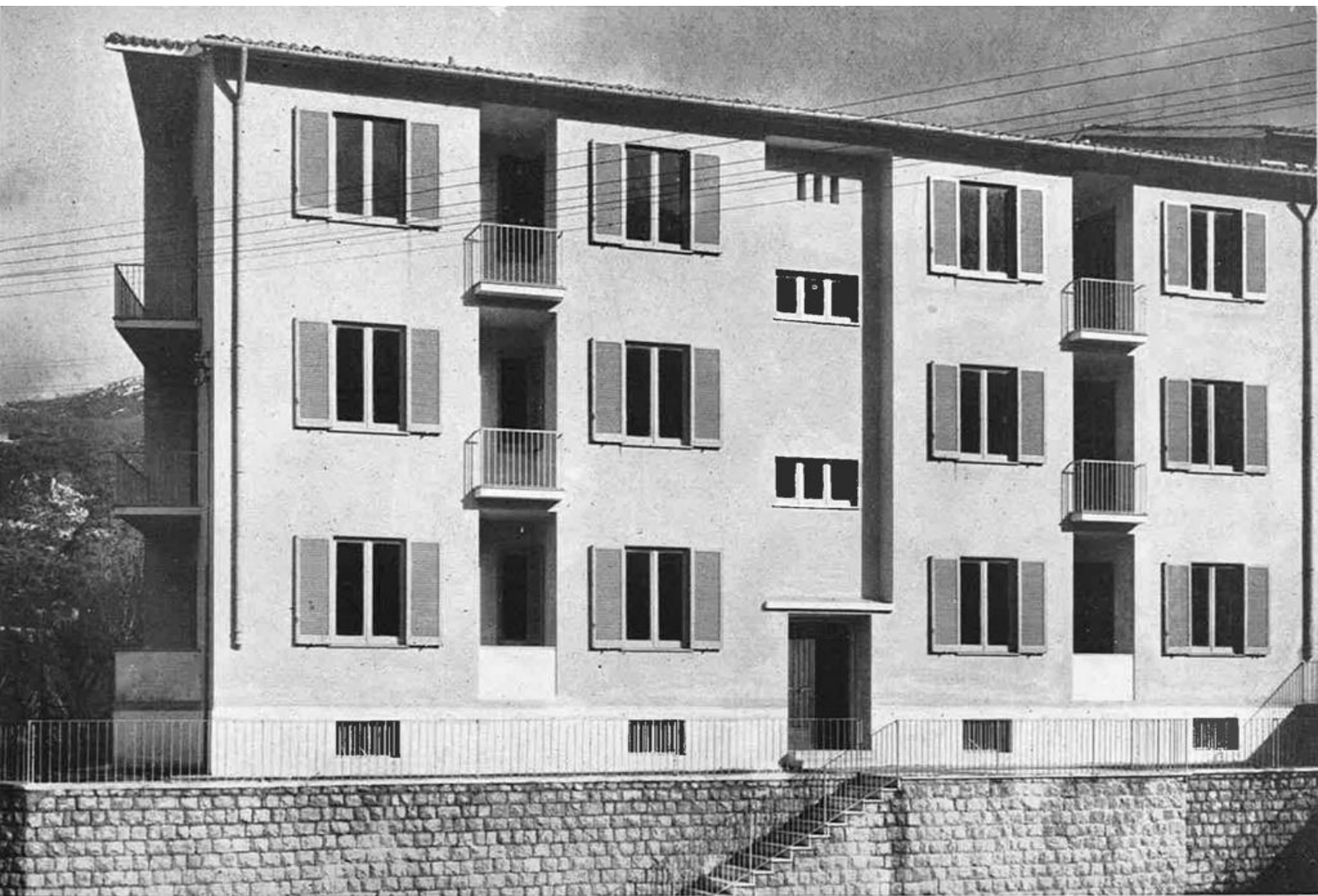


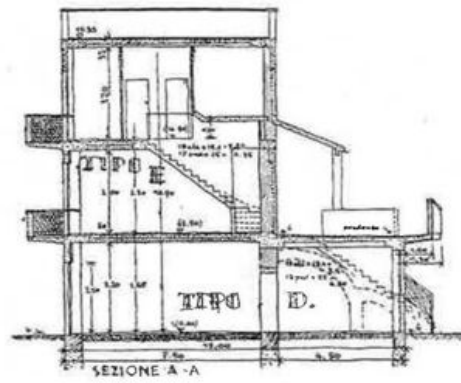
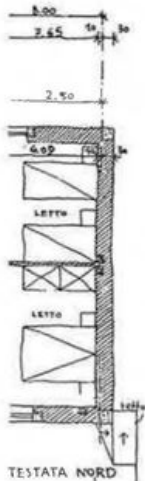
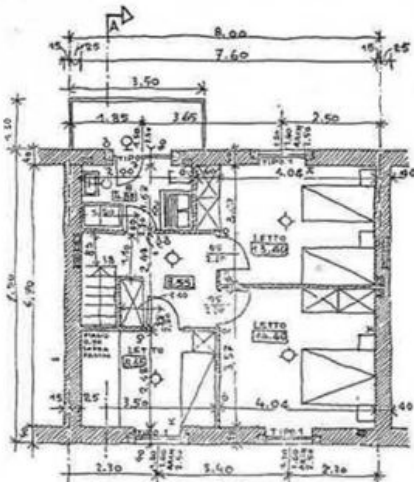


**SOLOFRA (Avellino)**

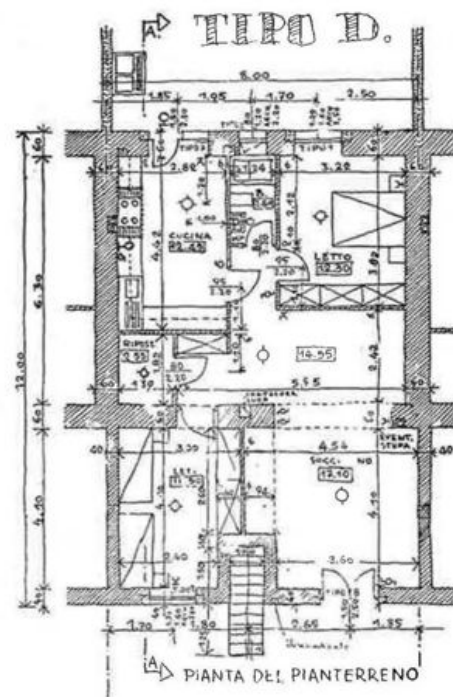
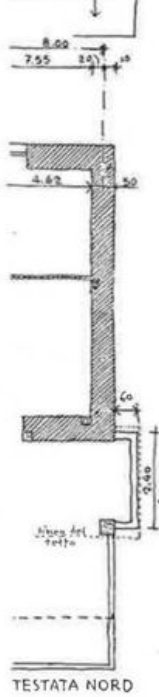
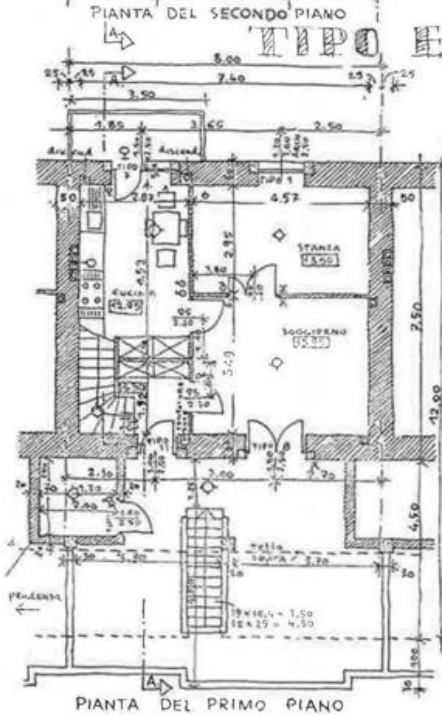
Arch. Francesco Fariello



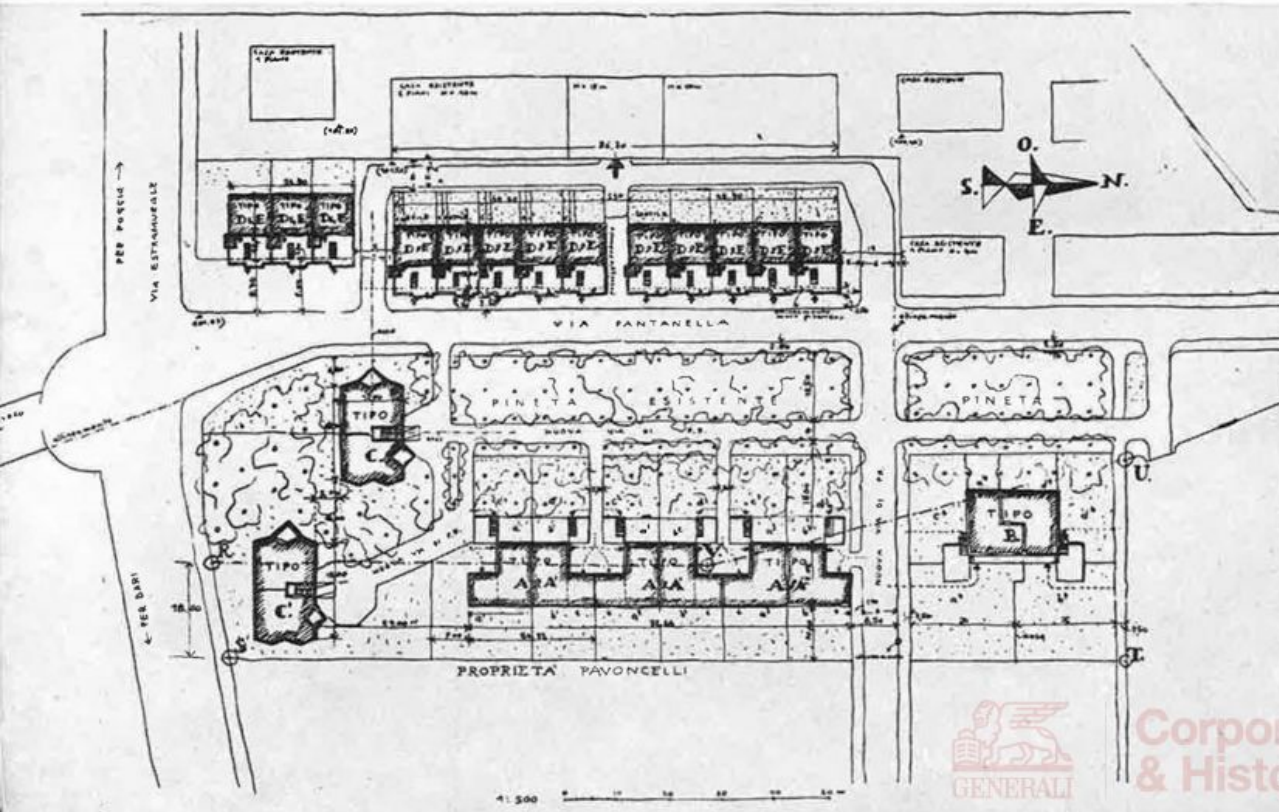




Piante e sezione di un elemento-schiera



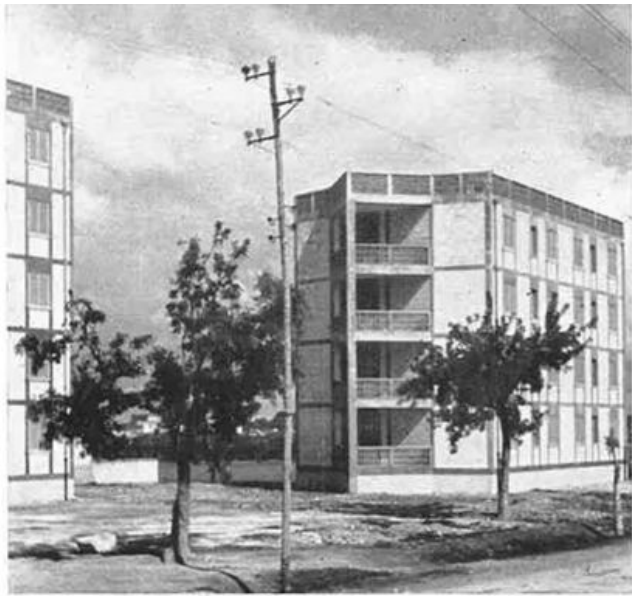
CERIGNOLA (Bari)  
Arch. Mario Ridolfi

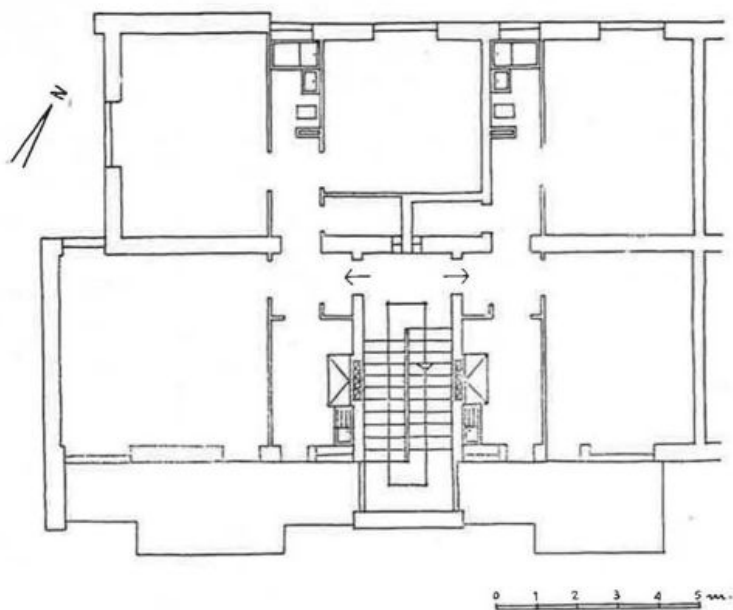


Planimetria  
generale



Corporate Heritage  
& Historical Archive





Pianta piano tipo

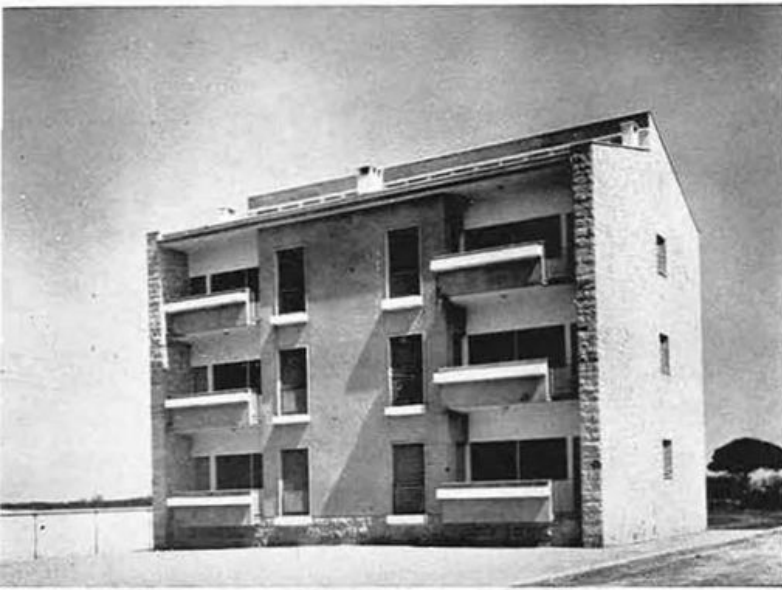
**SANTERAMO IN COLLE (Bari)**

Arch. Sergio Mezzina

222

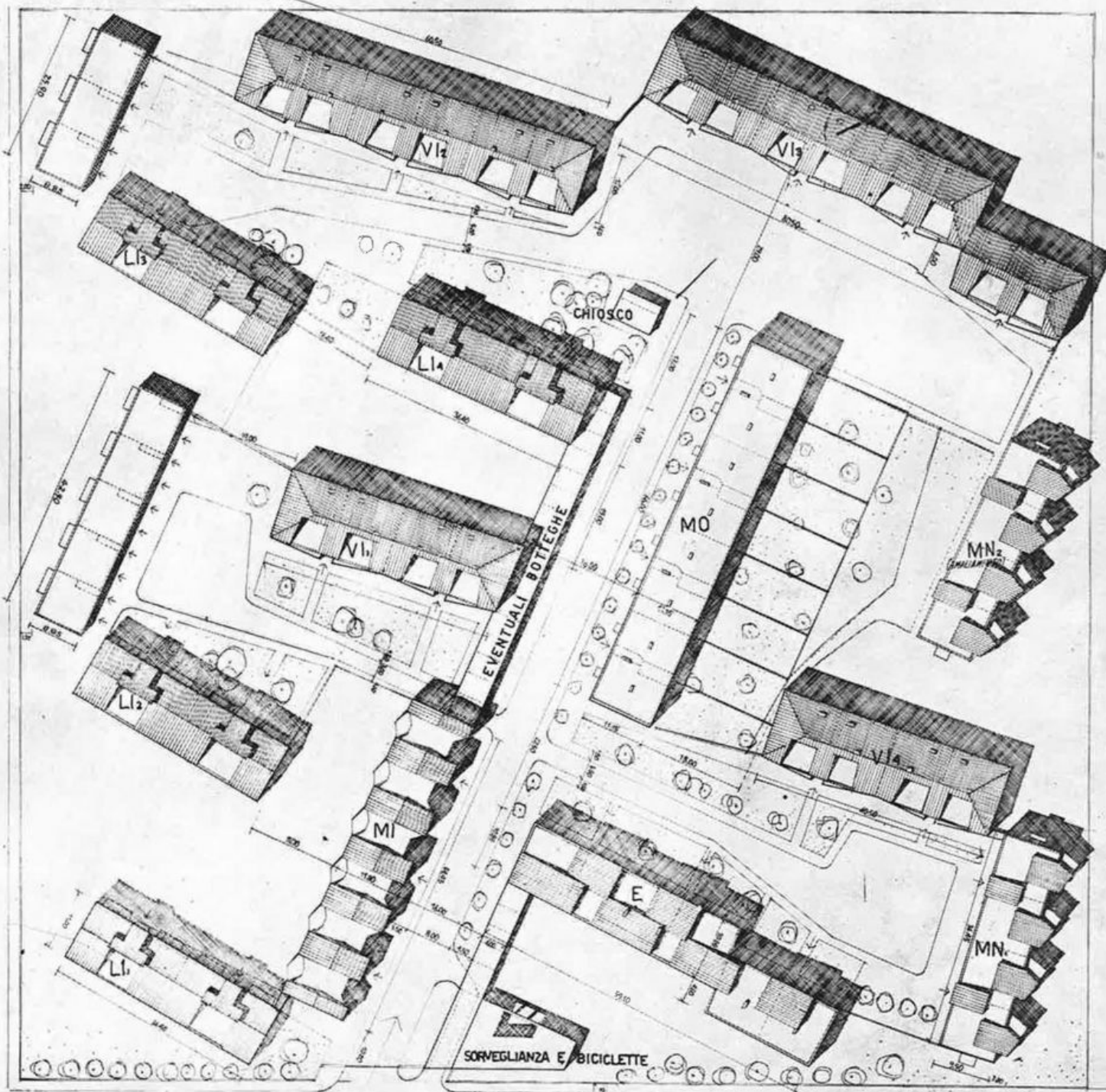


**Corporate Heritage  
& Historical Archive**



**TARANTO - Unità d'abitazione al quartiere Tamburri**

Progettazione urbanistica dell'Arch. Eugenio Montuori



STRADA PROVINCIALE.

TARANTO CRISPIANO



**MESSINA - Unità d'abitazione a S. Licandro**

Ing. Giuseppe Martines

Planimetria generale





**1 - CALATAFIMI**

Arch. Saverio Tortorici

**2-3 - MESSINA - S. Licandro**

Arch. Giuseppe Martines





2



Corporate Heritage  
& Historical Archive

**PALERMO - Edifici nel quartiere Malaspina**

Arch. Vittorio Ziino



**AGRIGENTO**

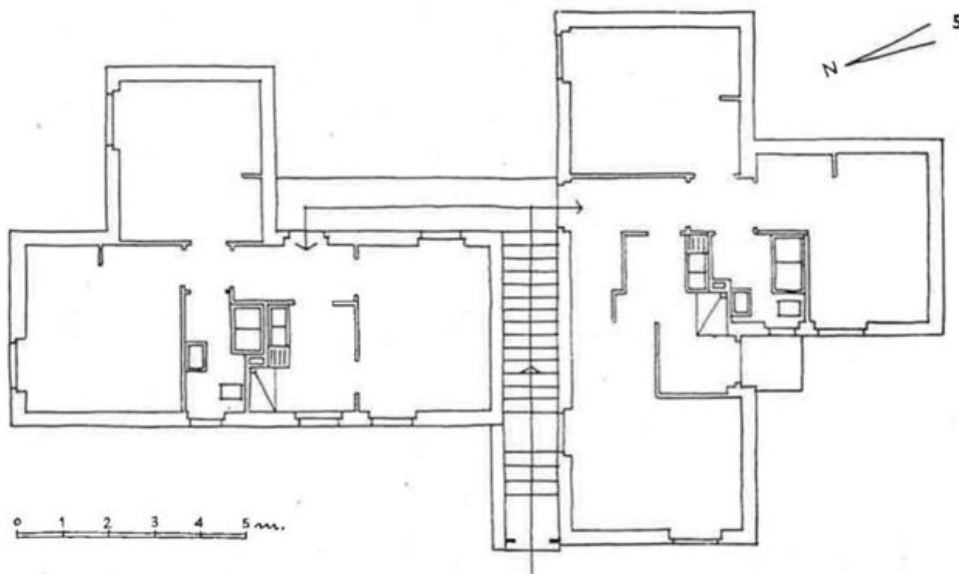
1 - Arch. Maria Antonietta Drago

**2-5 - SCIACCA**

Arch. Giuseppe Samonà

**6-7 - CEFALU'**

Arch. F. Chiaramonti Bordonaro



Pianta edificio a due piani

1



2



3

4



6



7

**PETRALIA SOTTANA (Palermo)**

Arch. Giuseppe Spatrisano



Corporate Heritage  
& Historical Archive



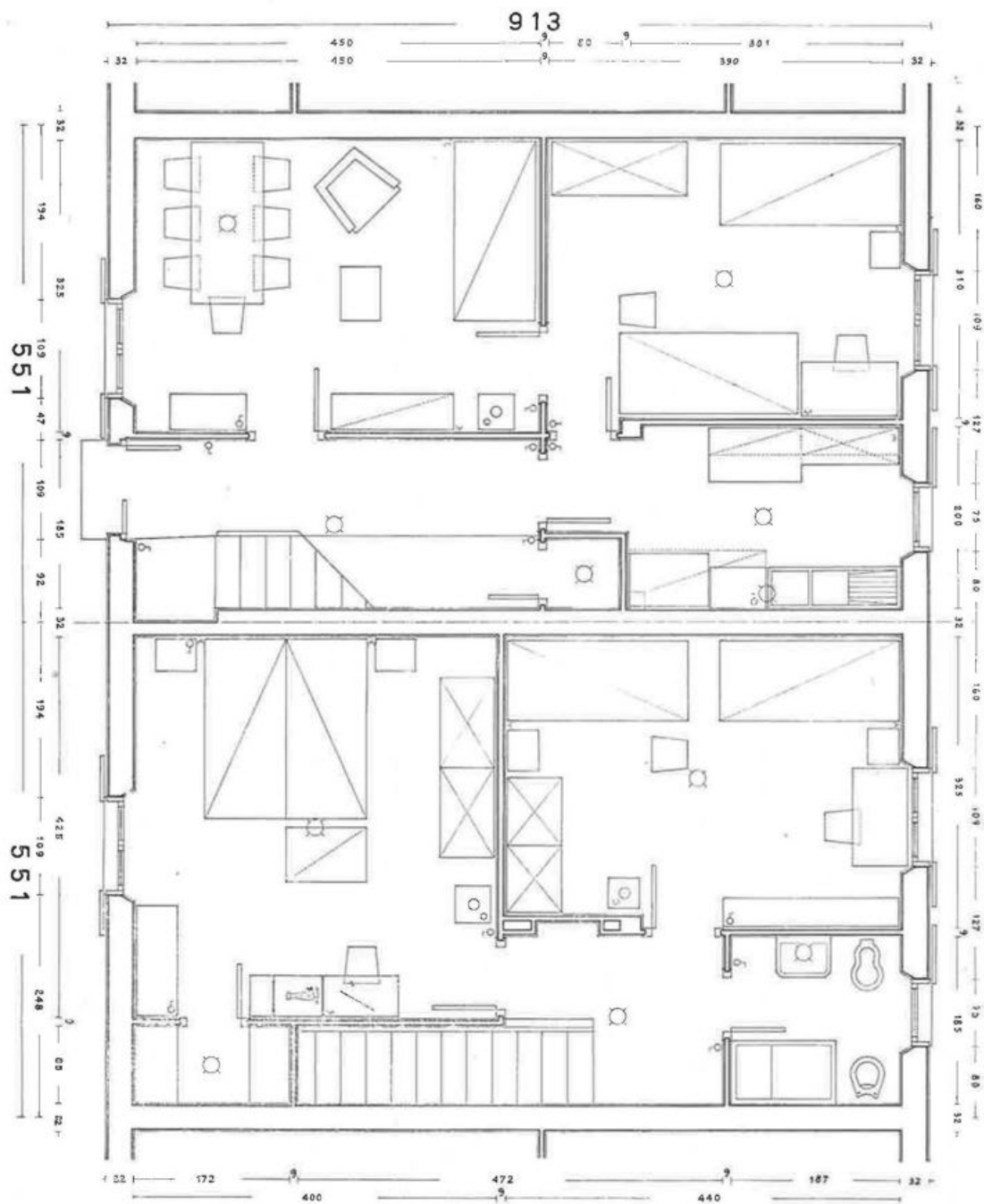
Corporate Heritage  
& Historical Archive



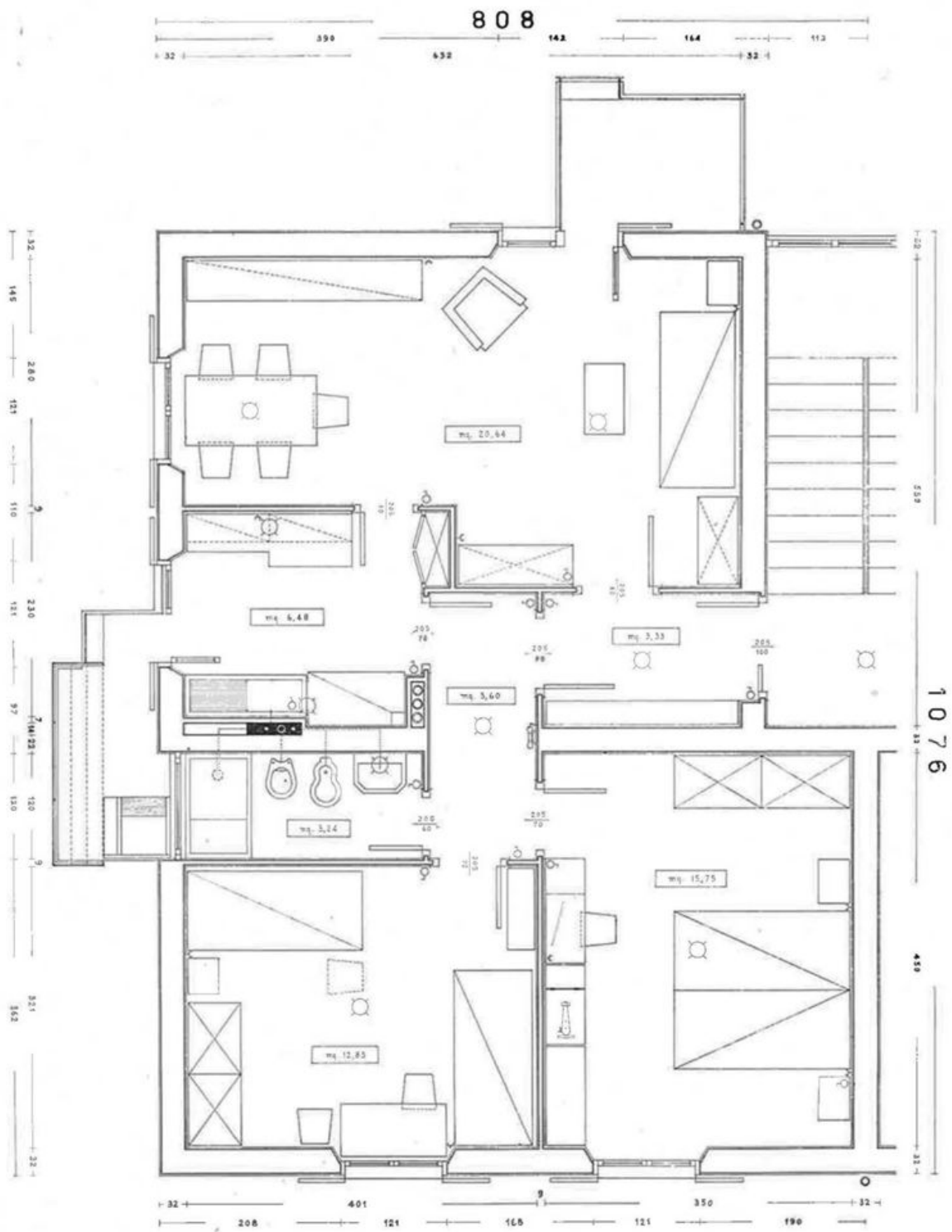
**TIPI PLANIMETRICI DI ALLOGGI  
ELABORATI D'UFFICIO**



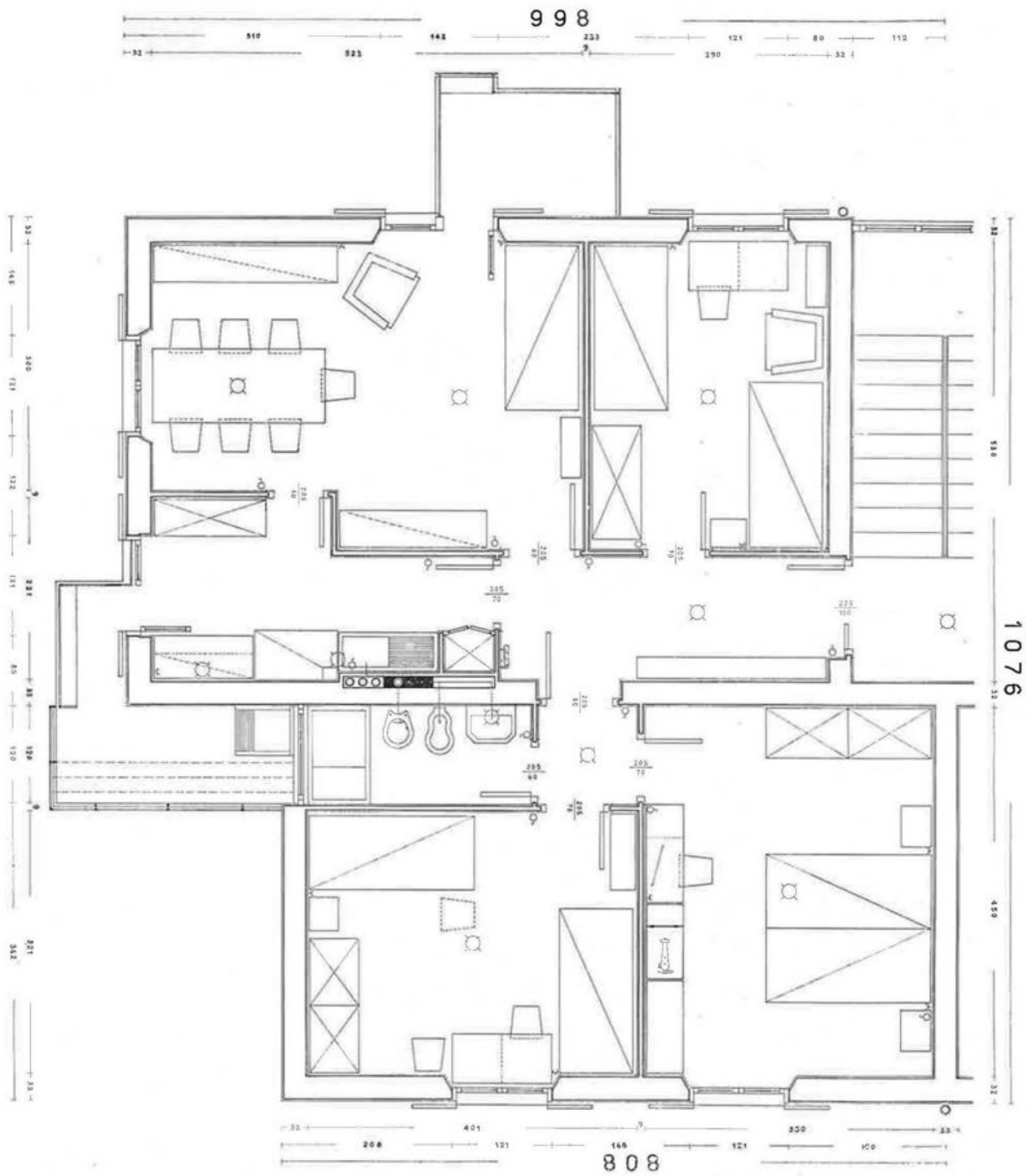




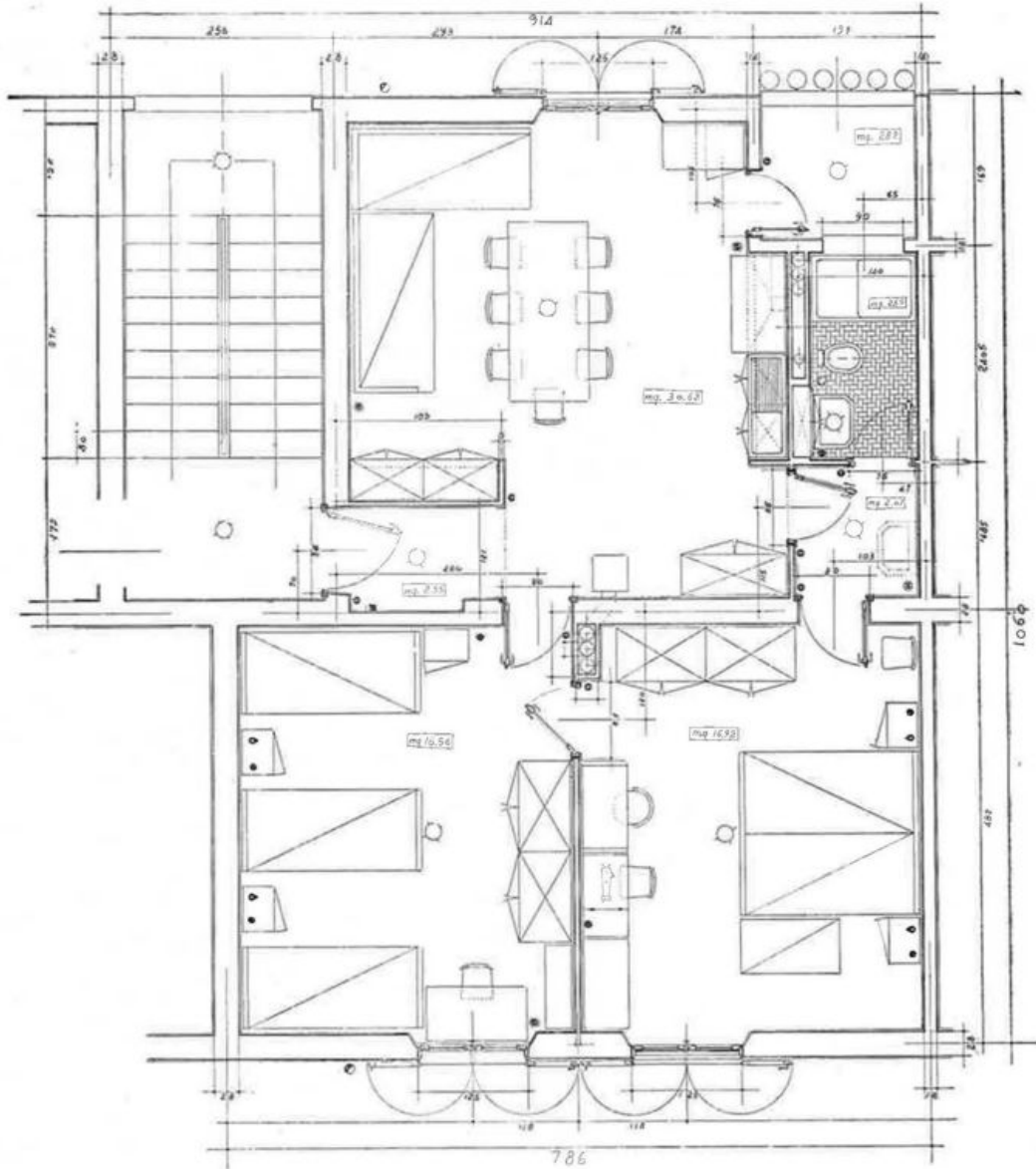
1) - Casa a schiera con alloggio su due piani (6 vani)



2) - Casa multipiana isolata con due alloggi per piano-scala (5 vani)

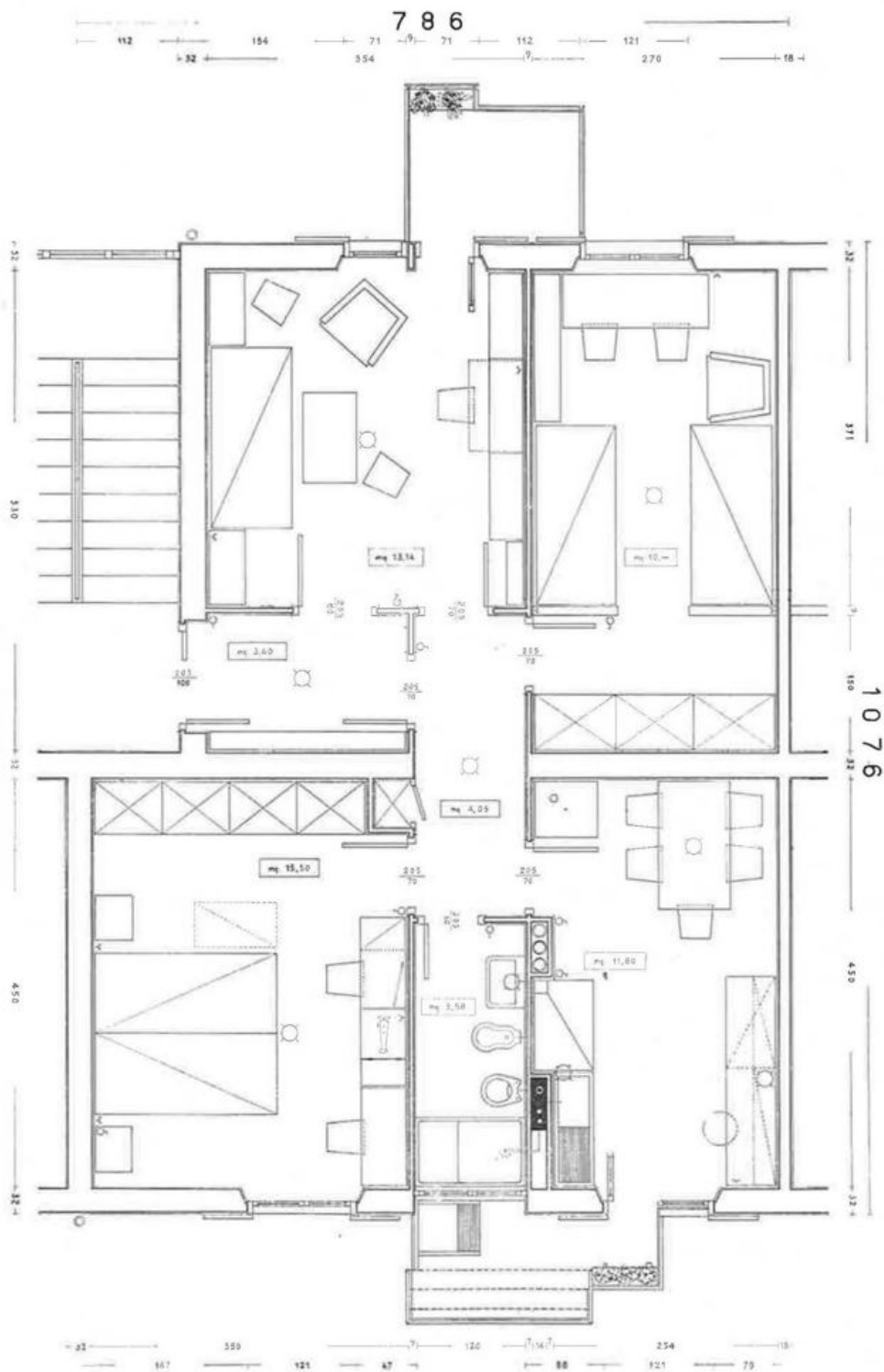


3) - Casa multipiana isolata con due alloggi per piano-scala (6 vani)



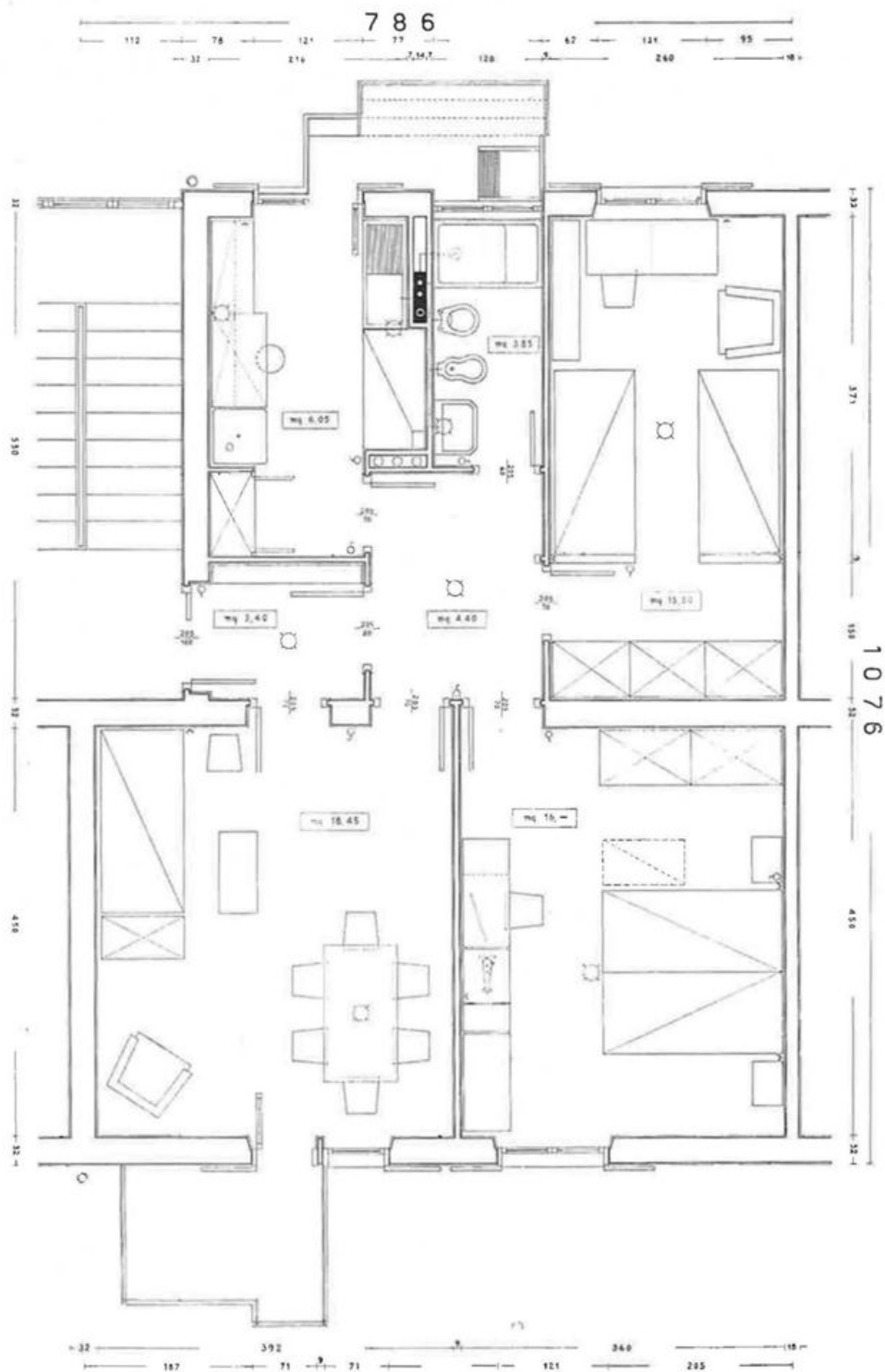
4) - Casa multipiana continua con due alloggi per piano-scala (5 vani)

N. B. Tipo di alloggio con "cucinone" e cioè soggiorno - pranzo - cucina in un unico locale.



5) - Casa multiplana continua con due alloggi per piano-scala (5 vani)

N. B. Tipo di alloggio con cucina-pranzo nell'intimità dell'alloggio e soggiorno disimpegnato dall'ingresso.



**6) - Casa multipiana continua con due alloggi per piano-scala (5 vani)**

N. B. Cucina aperta sul disimpegno interno dell'alloggio; soggiorno-pranzo aperto su questo e disimpegno anche sull'ingresso.

FINITO DI STAMPARE  
IL 15 MAGGIO 1953  
CON I TIPI DELLA  
SOCIETÀ GRAFICA ROMANA  
VIA CESARE FRACASSINI 60



Corporate Heritage  
& Historical Archive

