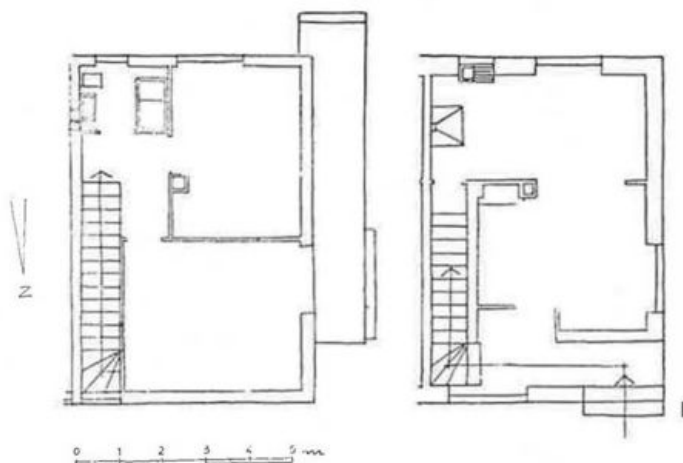


1-5 - BORNIO (Brescia)

6 - PIAN D'ARTOGNE (Brescia)

7 - PIAN CAMUNO (Brescia)

Arch. Vittorio Montiglio





2



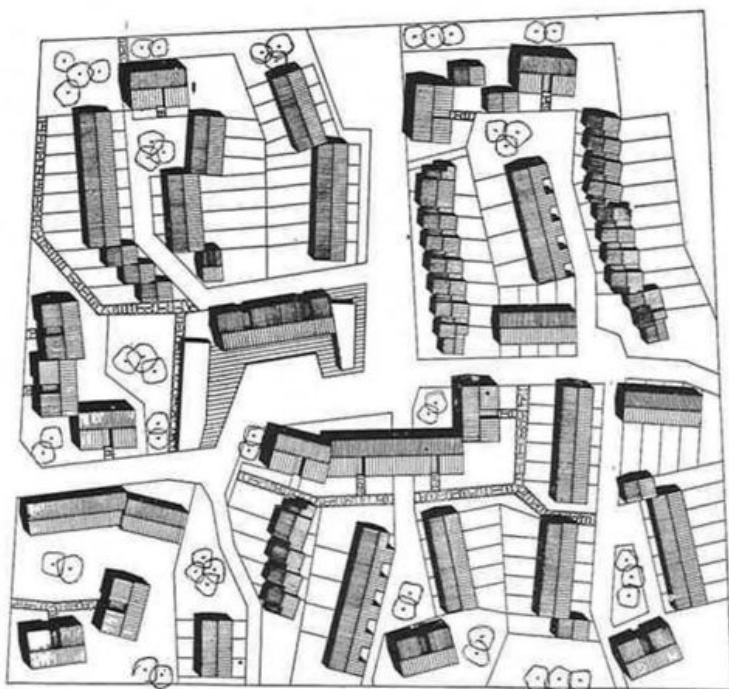
3

4
6

5
7



Digitized by
Cultural Heritage
& Historical Archive



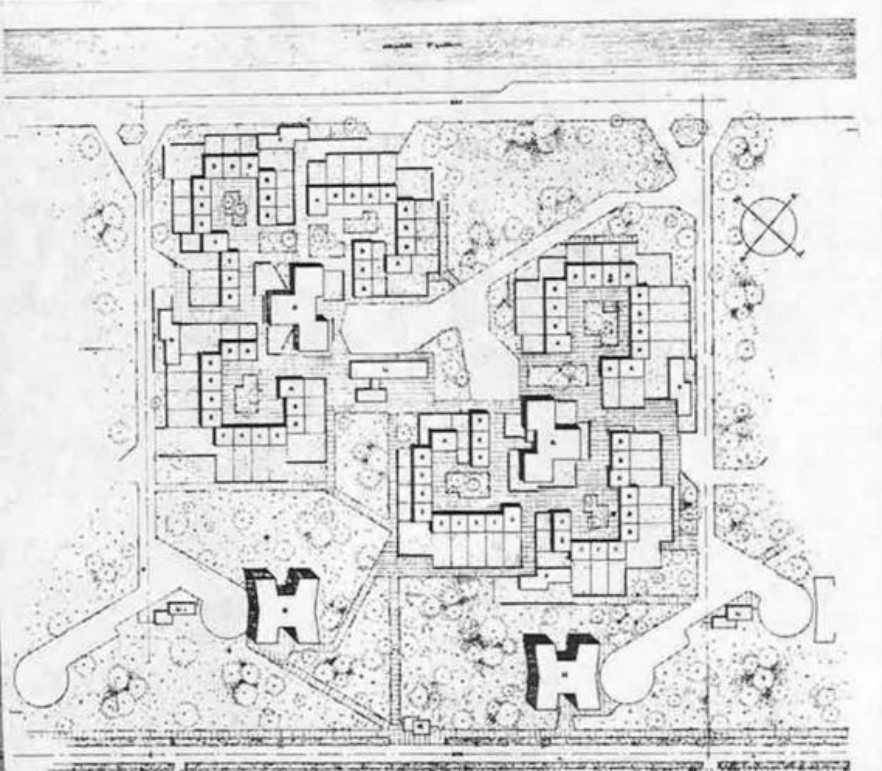
**VENEZIA - Unità di abitazione
nel quartiere di Mestre**

Progetto d'ufficio

VENEZIA - Quartiere residenziale a Mestre

Architetti Capigruppo: Luigi Piccinato, Giuseppe Samonà.

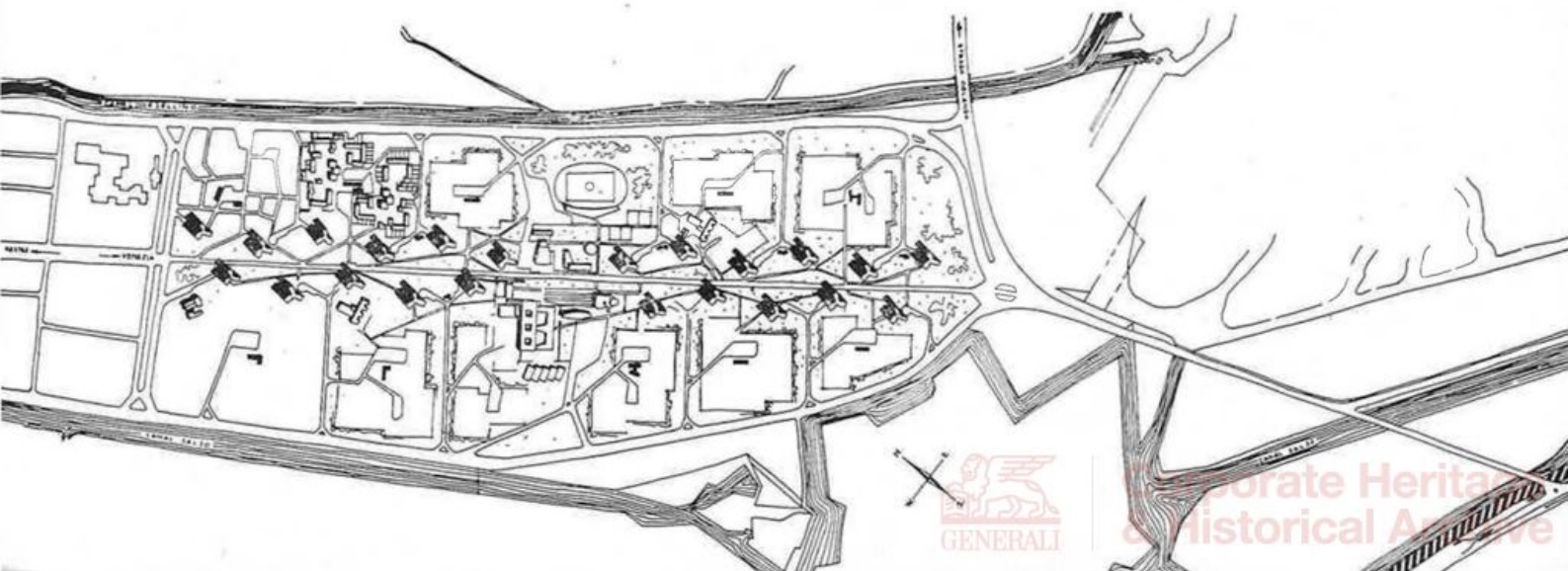
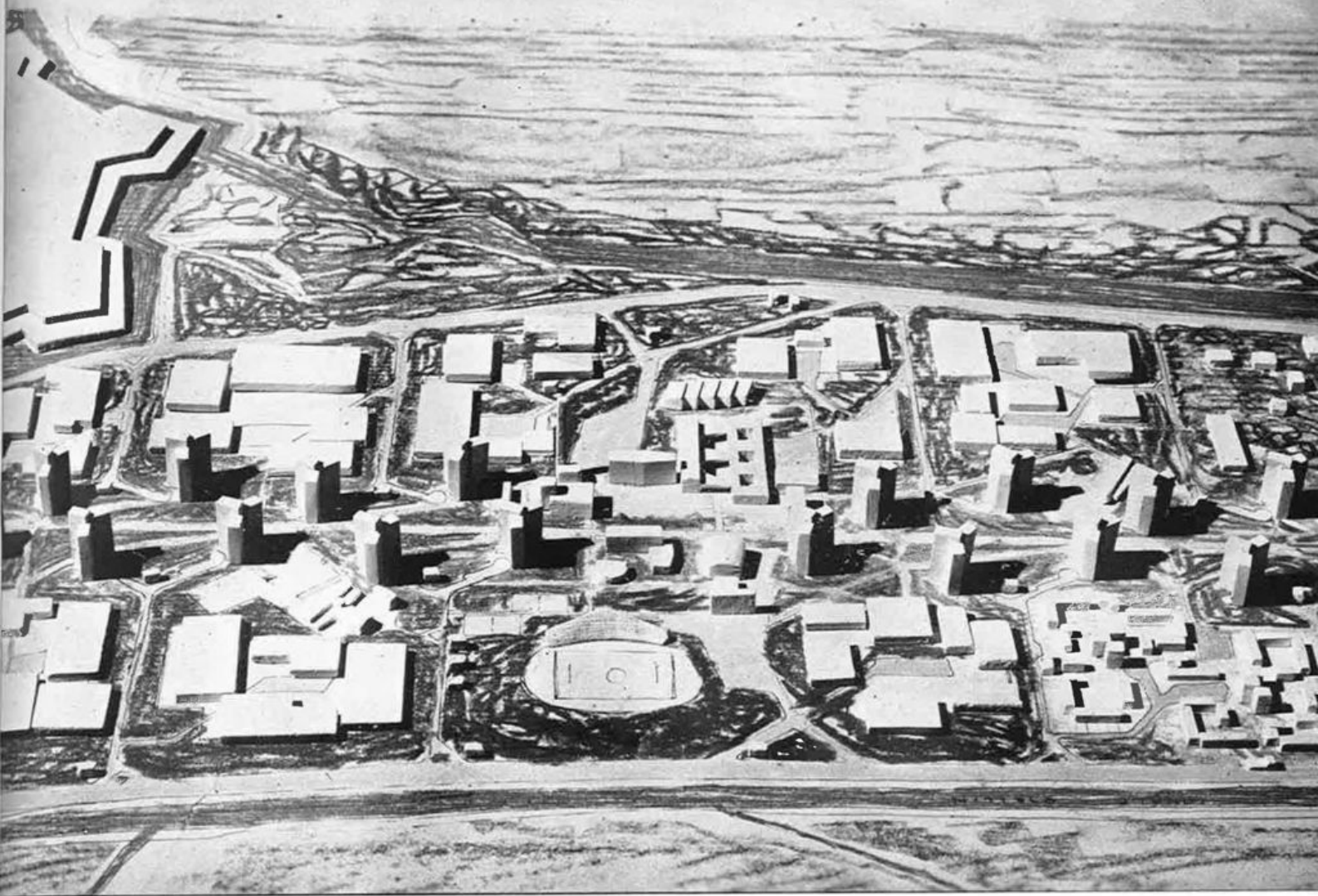
Architetti e Ingegneri collaboratori: Piero Bruscaignin, Mario Cavinato, Carlo Cristofoli, Mario D'Oriz, Alberto Magrini, Angelo Scattolin, Egle Renata Trincanato, Virginio Vallot, Innovente Vianello.



Unità di abitazione nel quartiere di Mestre



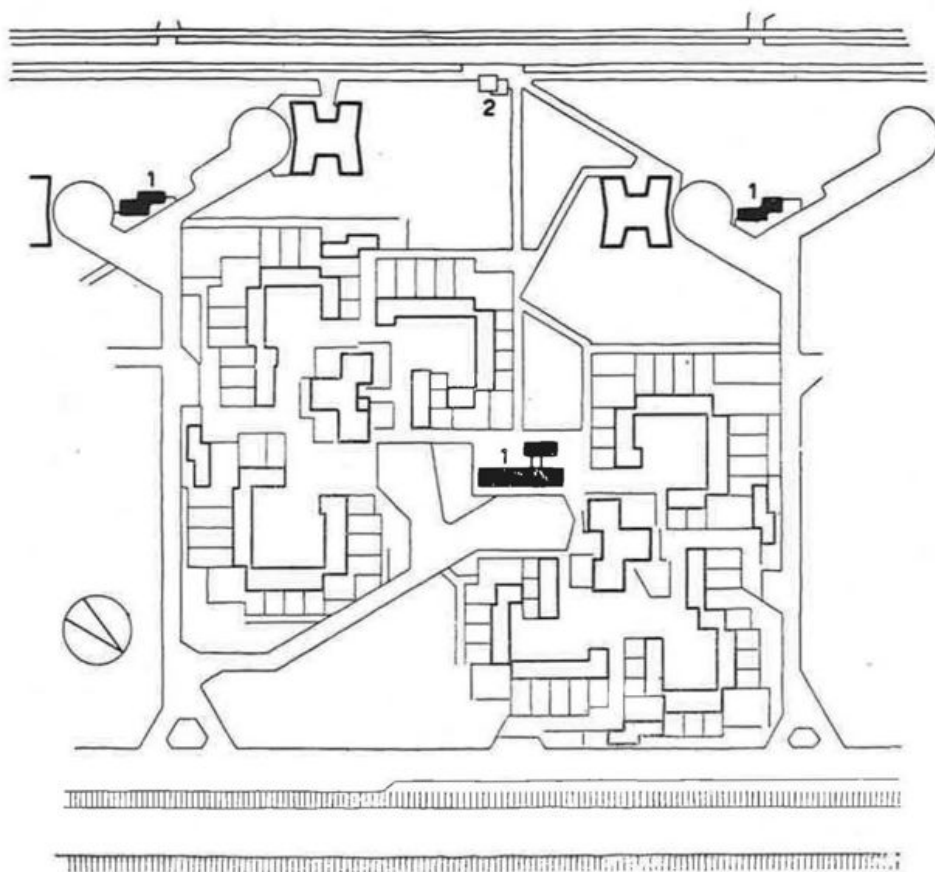
**Corporate Heritage
& Historical Archive**



VENEZIA - Quartiere residenziale a Mestre

Architetti capigruppo: Luigi Piccinato, Giuseppe Samonà

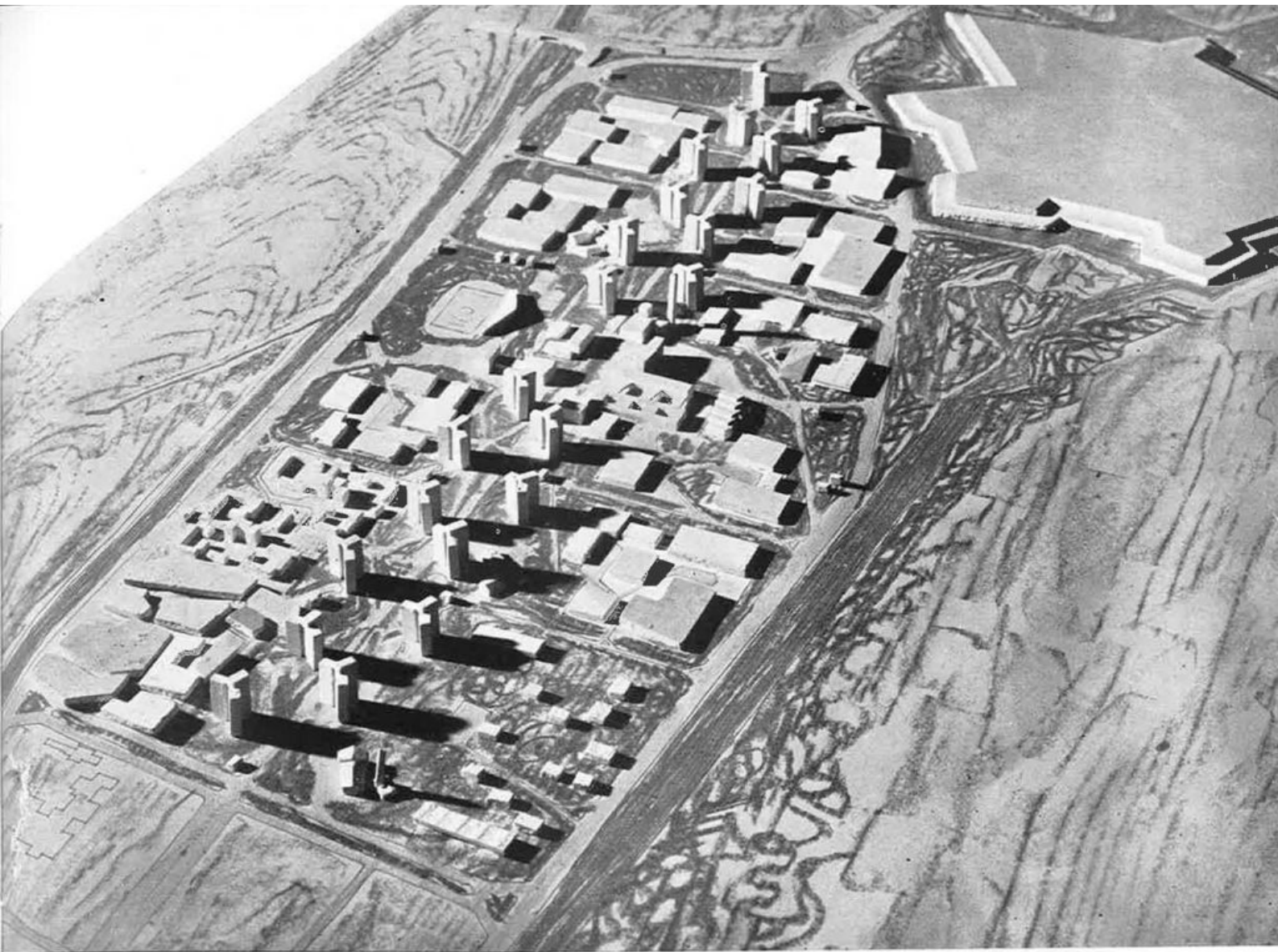
Architetti e Ingegneri collaboratori: Piero Bruscaignin, Mario Cavinato, Carlo Cristofoli, Mario D'Oria, Alberto Magrini, Angelo Scattolin, Egle Renata Trincanato, Virginio Vallot, Innovente Vianello



VENEZIA - Unità di abitazione nel quartiere di Mestre

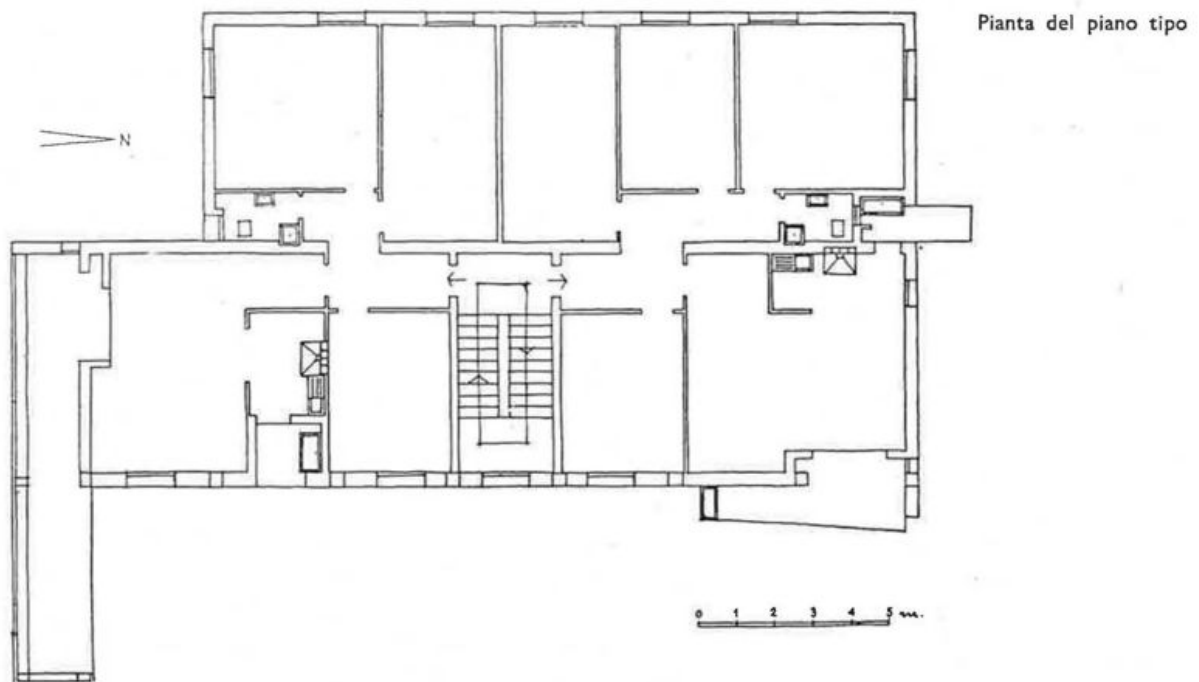
Servizi collettivi

- 1) Negozi di uso giornaliero
- 2) Fermata filoviaria



PADOVA

Arch. Francesco Mansutti
Arch. Gino Miozzo





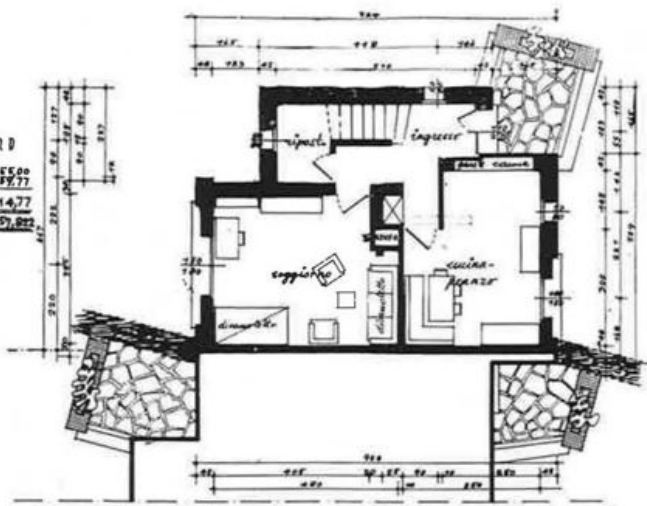
MEOLO (Venezia)

Arch. Angelo Tramontini

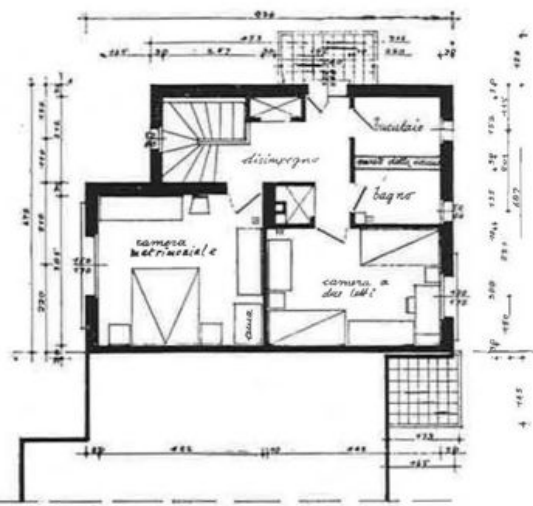
PIANO TERRA

ALLOGGIO TORTATA NORD

VANI LEGALI N° 4
 COPERT. P. TERRA MQ. 55,00
 COPERT. P. PRIMO MQ. 59,77
 TOTALE MQ. 114,77
 CURATORIA MQ. 359,022

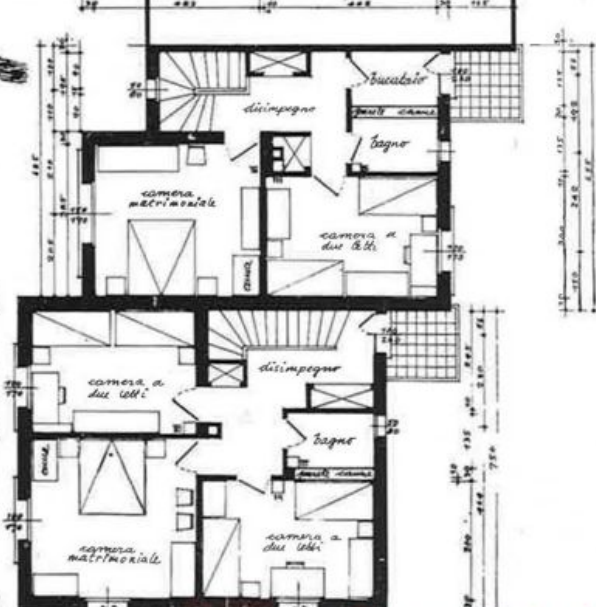
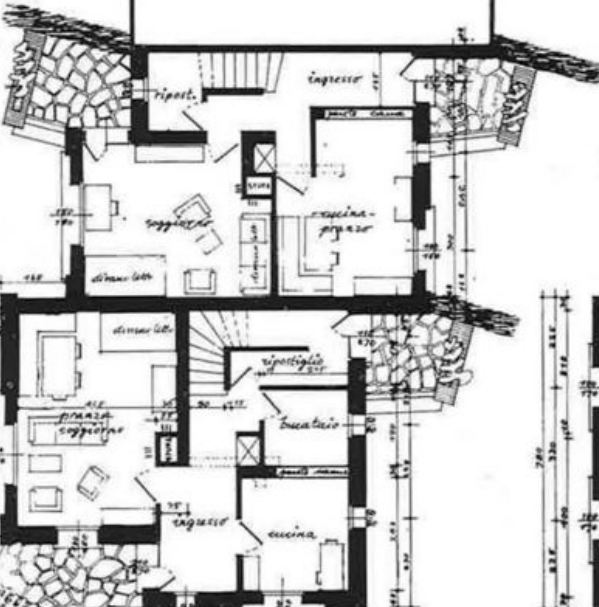


PIANO PRIMO



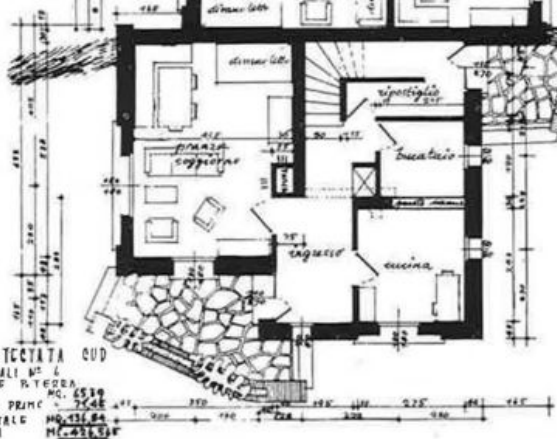
ALLOGGIO INTERMEDIO

VANI LEGALI N° 4
 COPERT. P. TERRA MQ. 45,47
 COPERT. P. PRIMO MQ. 55,31
 TOTALE MQ. 100,78
 CURATORIA MQ. 349,022



ALLOGGIO TORTATA SUD

VANI LEGALI N° 4
 COPERT. P. TERRA MQ. 45,47
 COPERT. P. PRIMO MQ. 55,31
 TOTALE MQ. 100,78
 CURATORIA MQ. 349,022





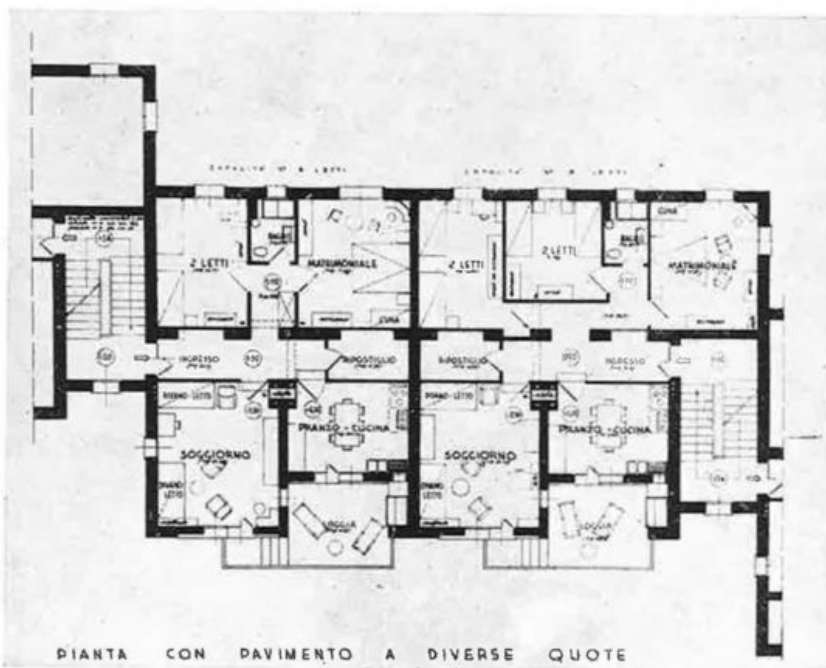
TREVISO

Arch. Angelo Tramontini



TREVISO

Arch. Angelo Tramontini





VERONA - Unità d'abitazione S. Pancrazio
Progettazione urbanistica dell'Arch. Plinio Marconi



Corporate Heritage
& Historical Archive

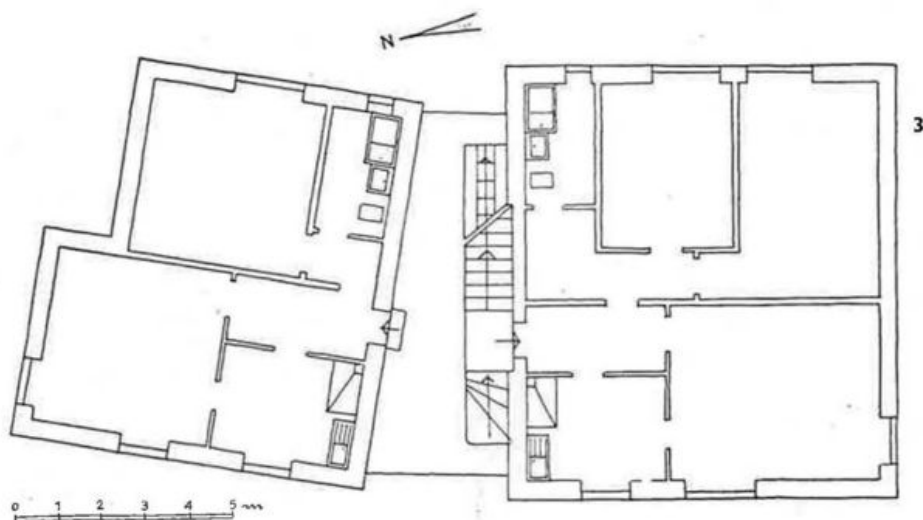
1-3 - **ALTAVILLA** (Vicenza)

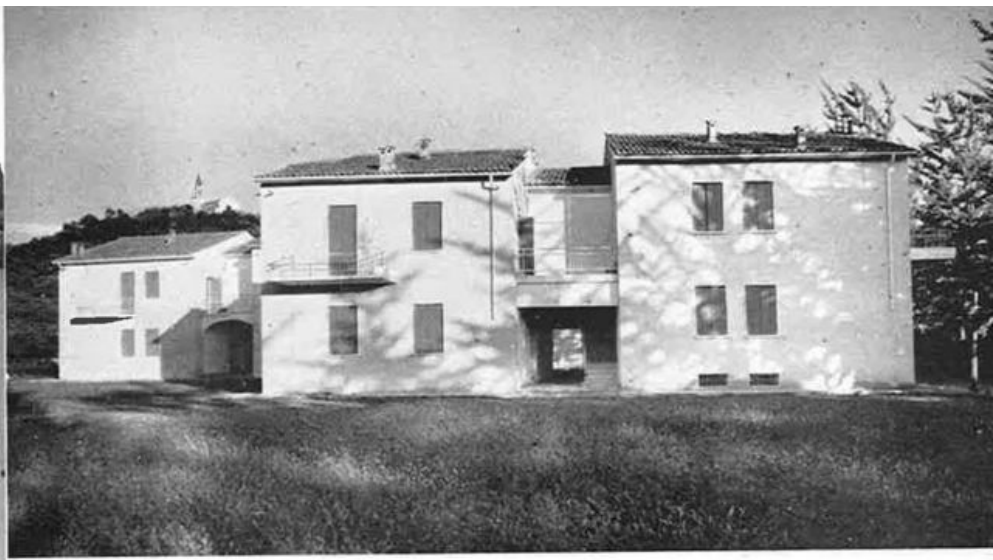
4-5 - **GRISIGNANO DI ZOCCO** (Vicenza)

Arch. Sergio Ortolani

6 - **S. AMBROGIO** (Verona)

Arch. Libero Cecchini





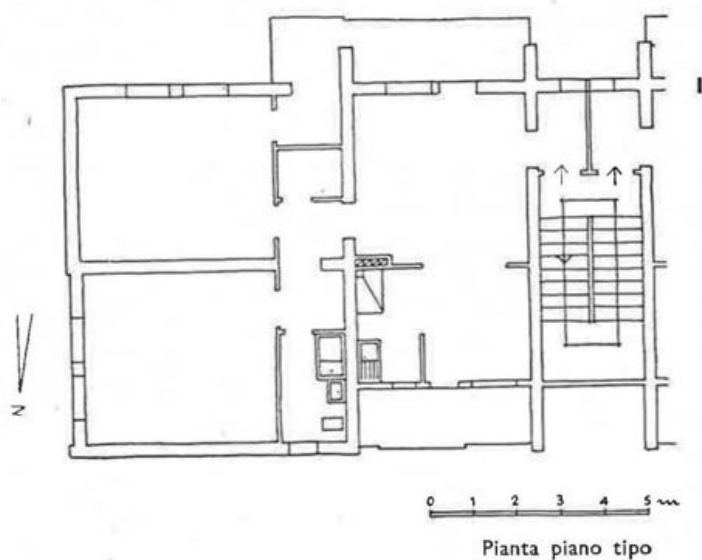
2



5



6



1-3 - **IESOLO (Venezia)**

Arch. Alcibiade Comar

4 - **GORIZIA**

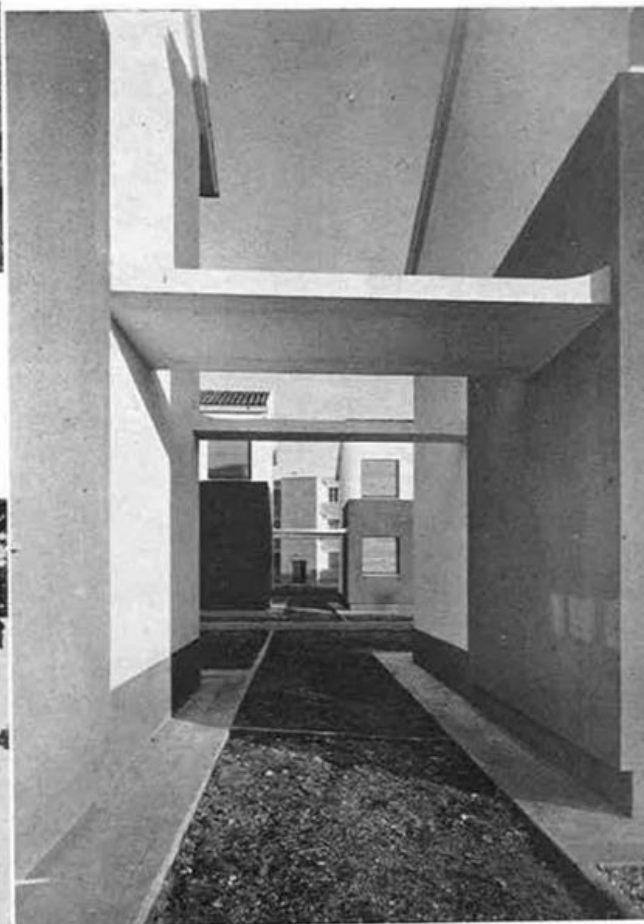
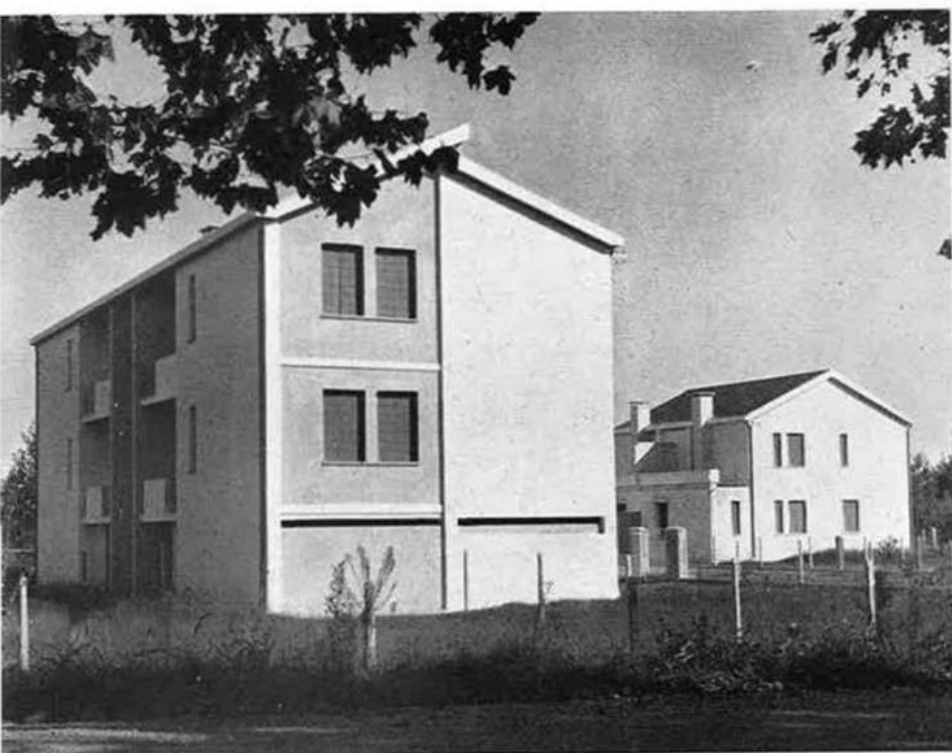
5 - **SAGRADO (Gorizia)**

Ingegneri Guido Schiozzi, Marco De Marco, Mario Bosco



2

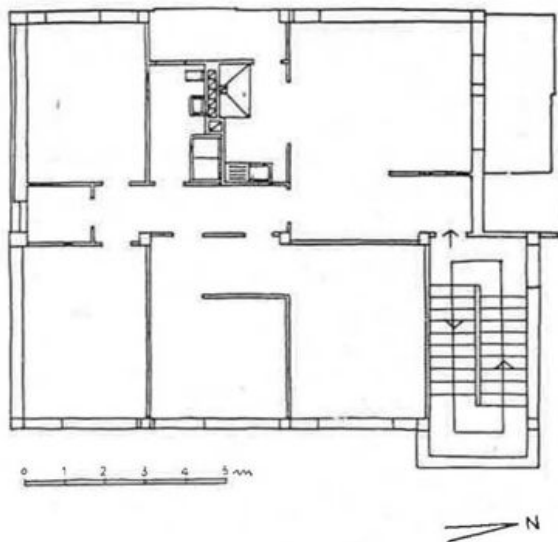
3



4

5





Pianta piano tipo

1-3 - **PORTOGRUARO (Venezia)**

Arch. Alcibiade Comar

4-5 - **GORIZIA**

Arch. Tullio Dall'Anese



Corporate Heritage
& Historical Archive



3

4



5

1 - **NEMBIA (Trento)**

Arch. Renzo Masé

2 - **GARDOLO (Treviso)**

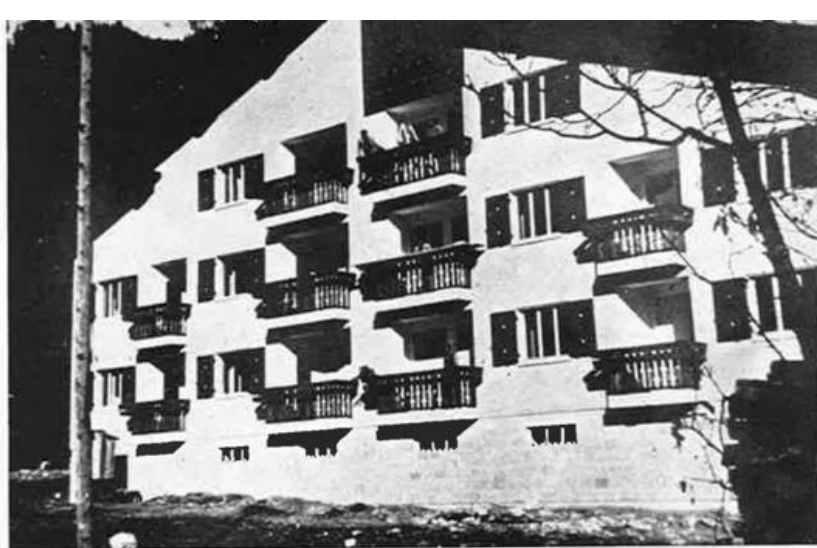
Ing. Renato Marchi

3-4 - **PINZOLO (Trento)**

Arch. Renzo Masé



1



2

3



4



Corporate Heritage
& Historical Archive

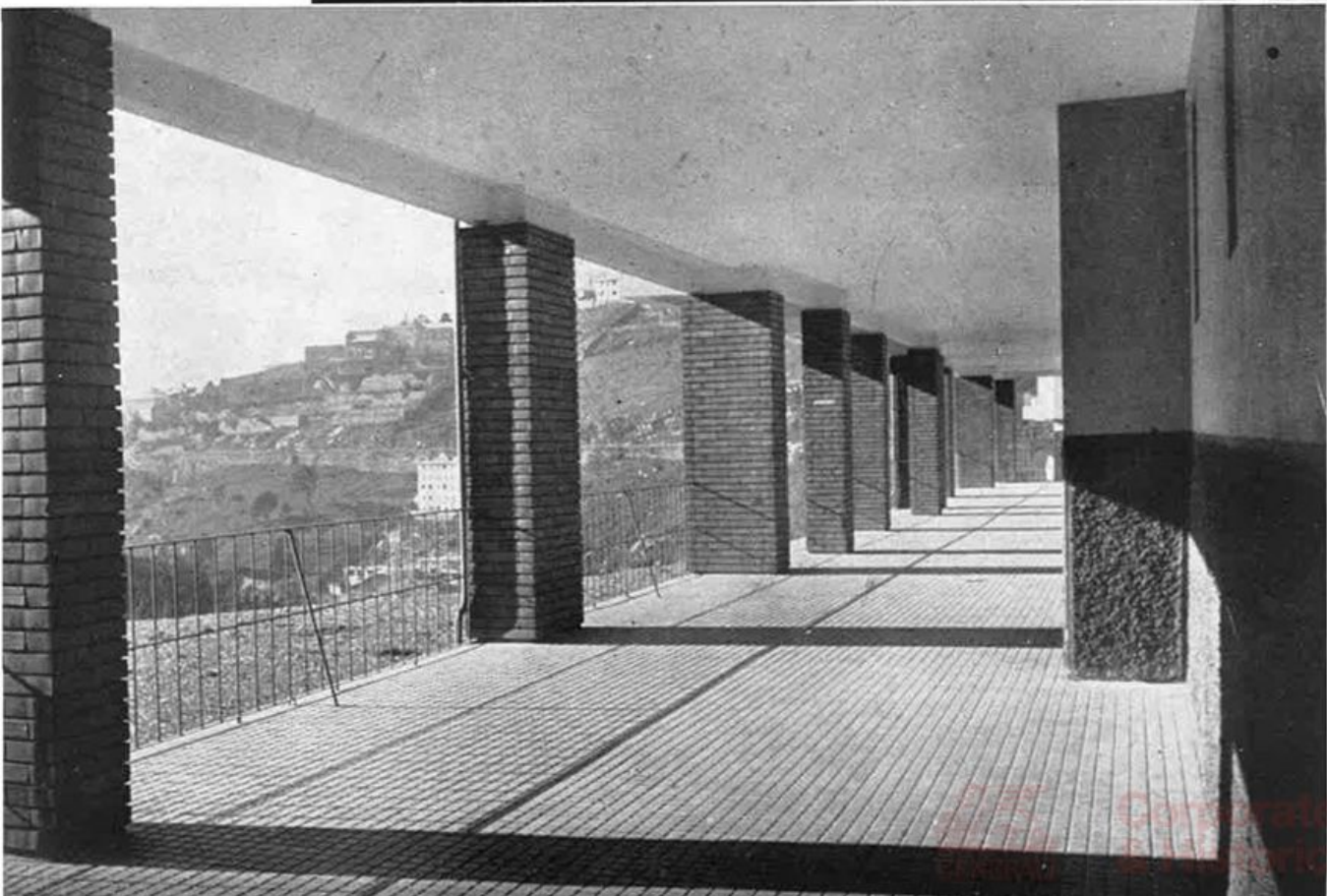
BRUNICO (Bolzano)

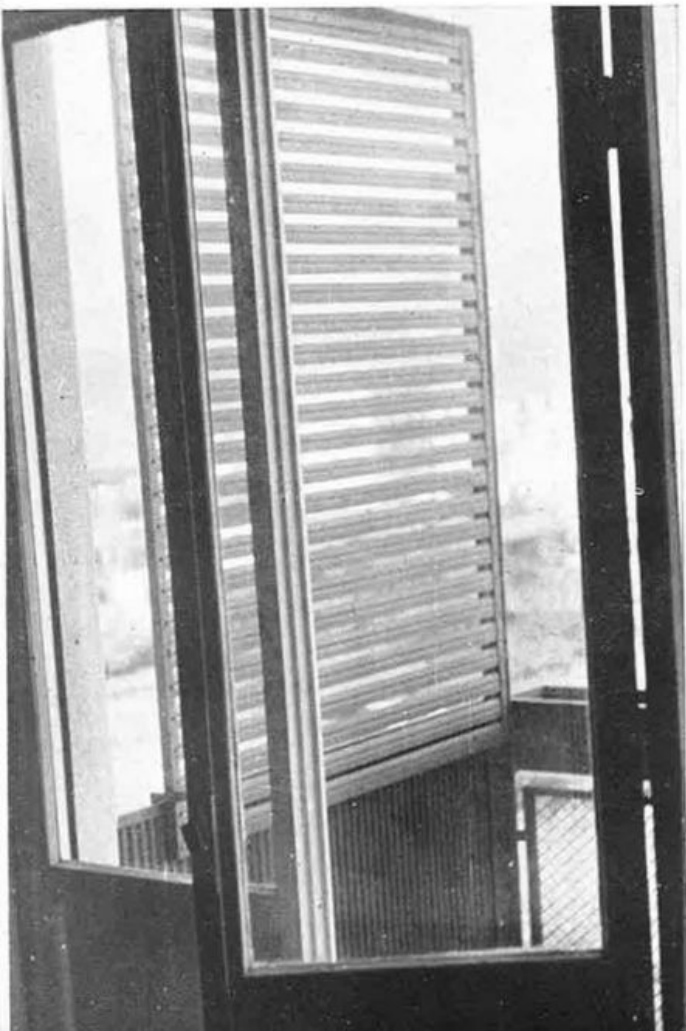
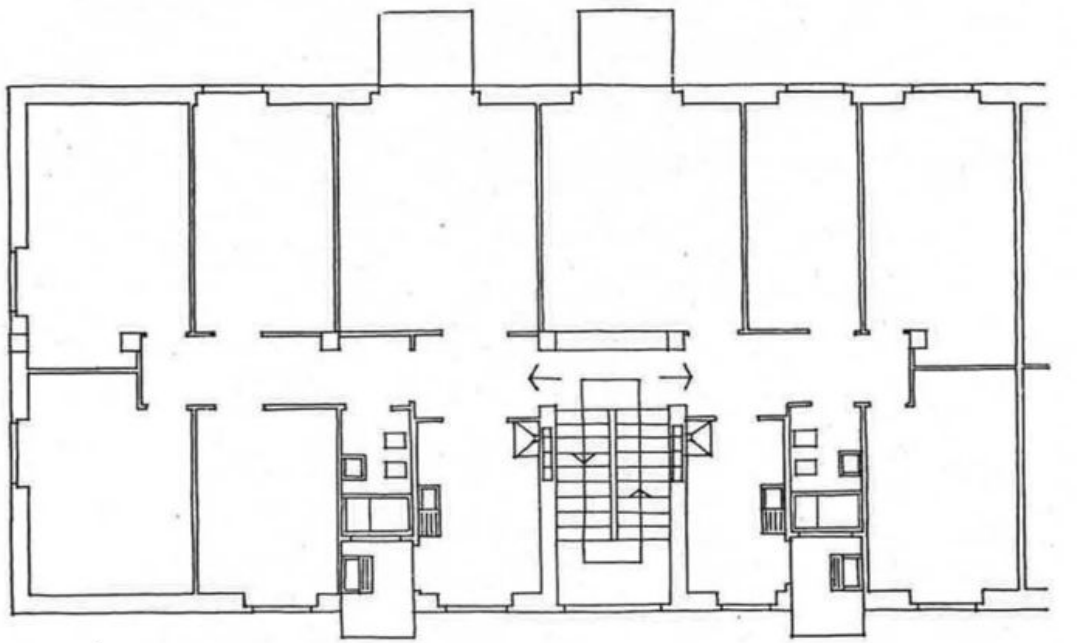
Ing. Ferdinando Walcher



GENOVA

Arch. Claudio Andreani



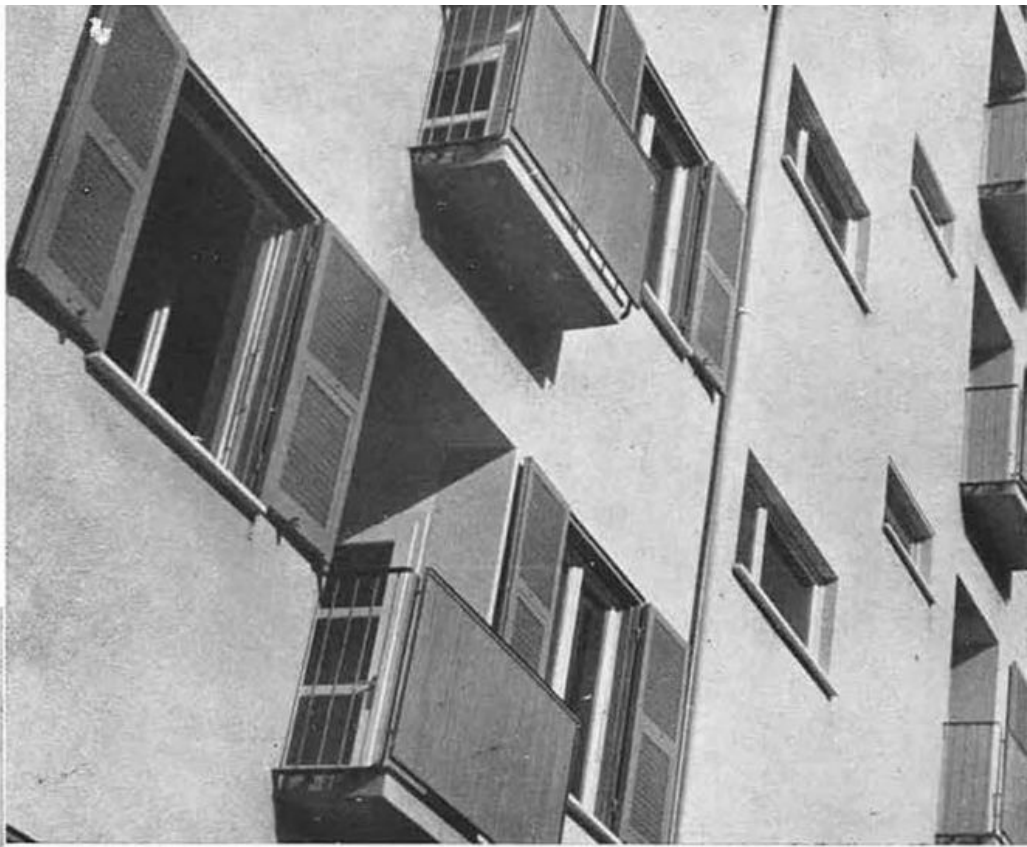


LA SPEZIA

Arch. Romualdo Landriscina

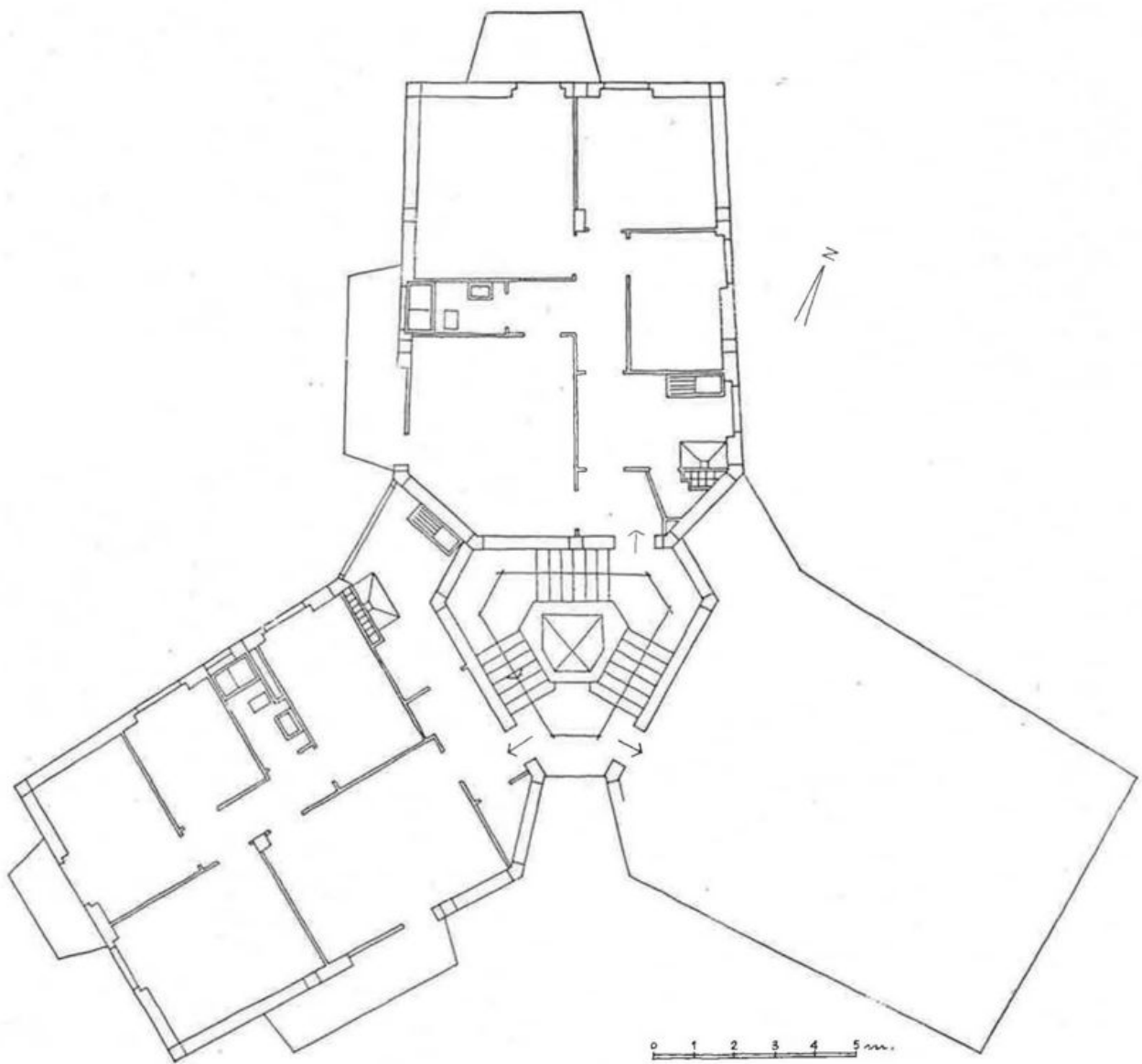


Corporate Heritage
& Historical Archive



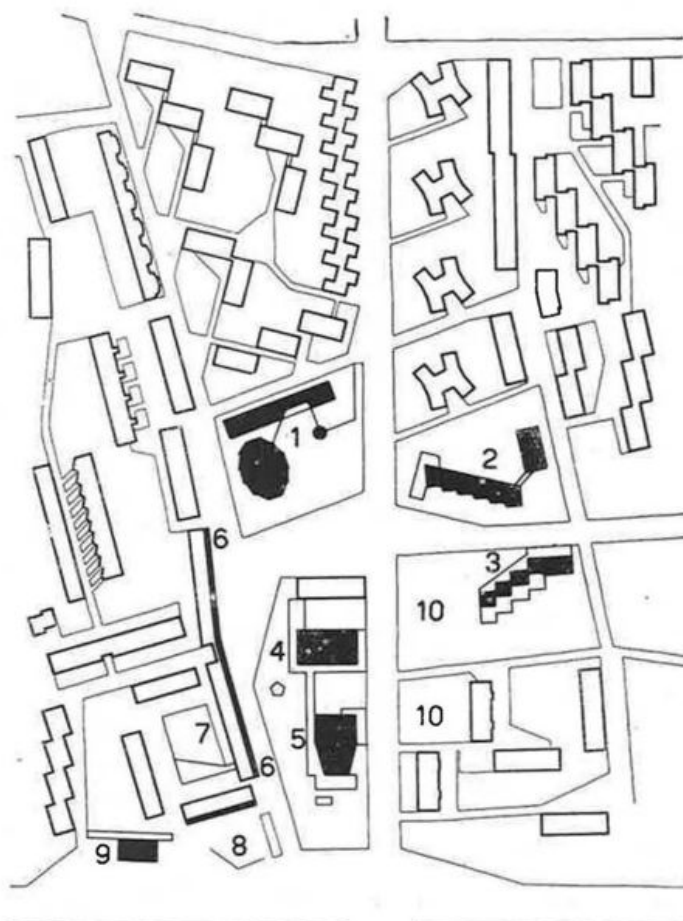
LA SPEZIA

Ing. Renato Cozzani
Arch. Alberto Di Sacco



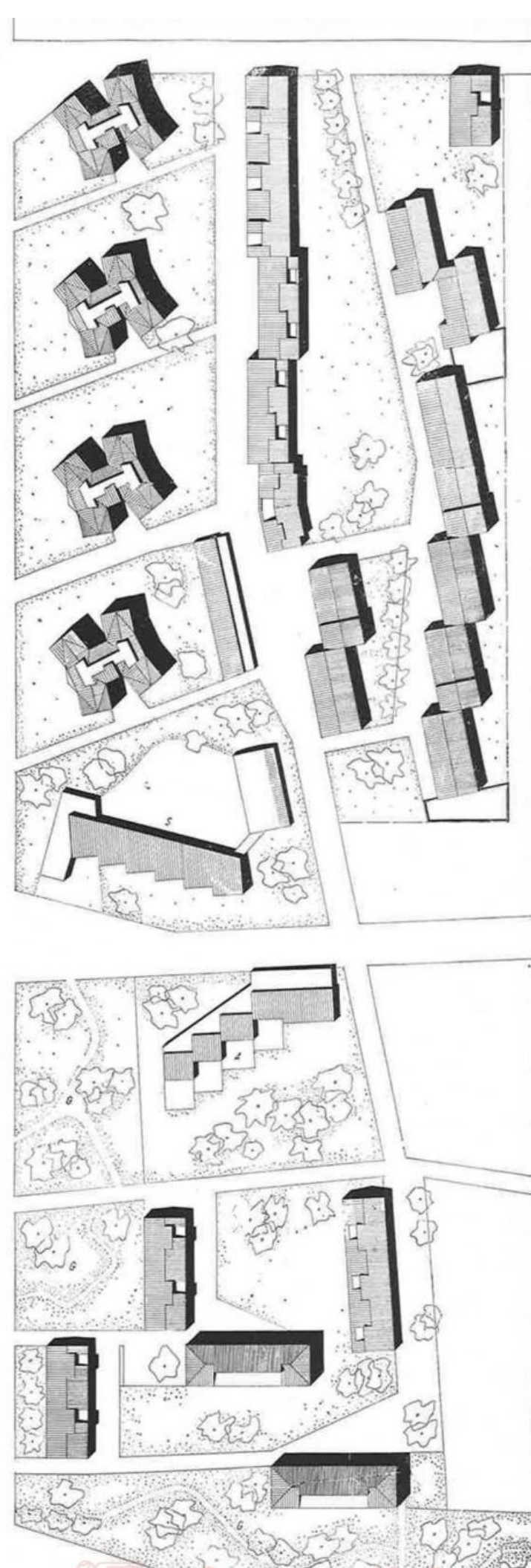
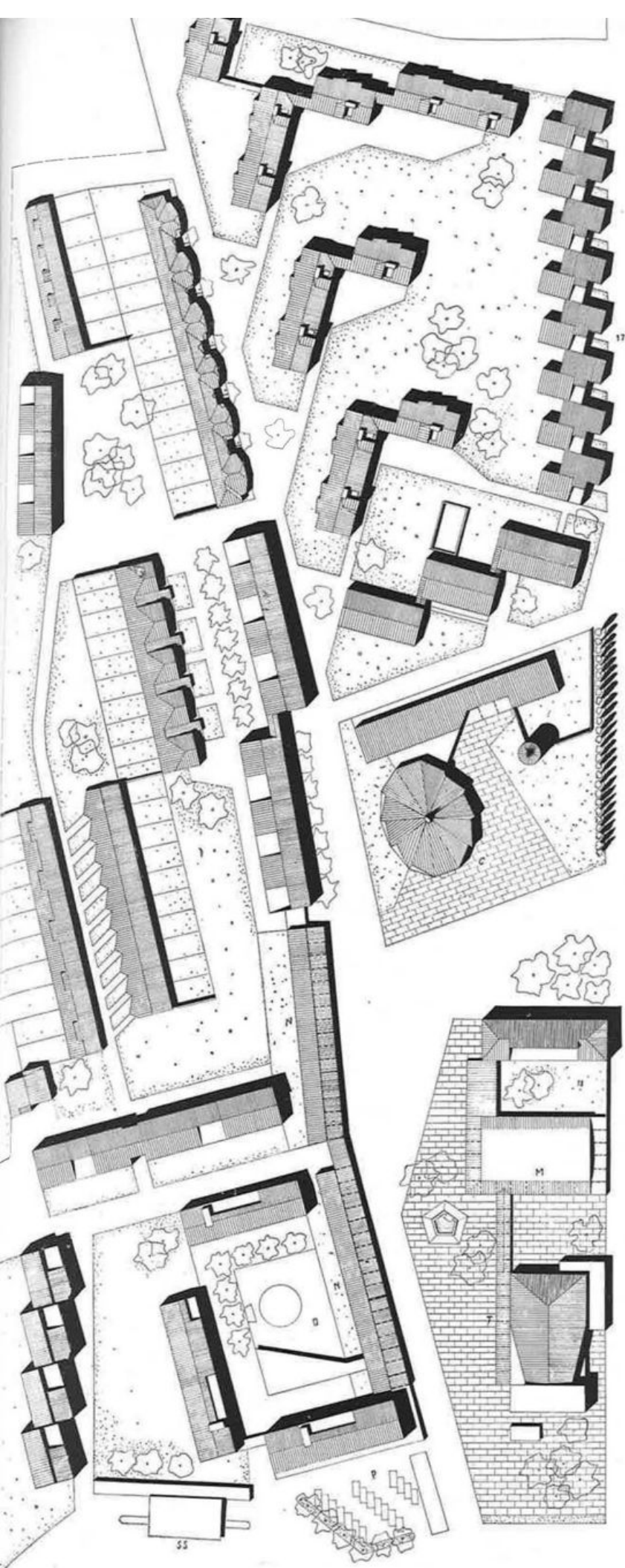


Arch. Giuseppe Vaccaro



Servizi collettivi

- 1) Chiesa e annessi
- 2) Scuola elementare
- 3) Asilo
- 4) Mercato coperto
- 5) Cinema-teatro
- 6) Negozi
- 7) Locale di deposito
- 8) Auto-parcheggio
- 9) Stazione di servizio
- 10) Giardino pubblico



Comitati Housing
Real Estate
 Pianificazioni generali di fabbricati residenziali e degli
 edifici di carattere pubblico e commerciale. - Scala: 1:500

1-2 - MODENA

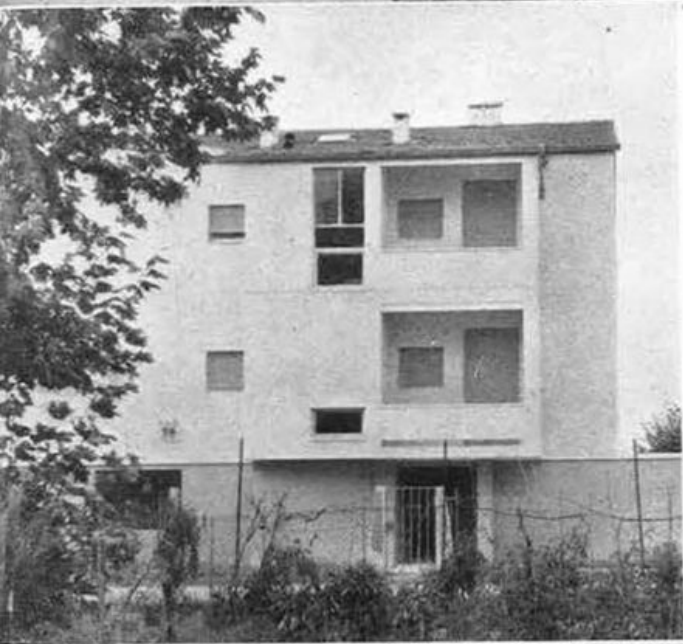
Arch. Manfredo Vaccari Giglioli
Ing. Carlo Covili

3-4 - MASSALOMBARDA (Ravenna)

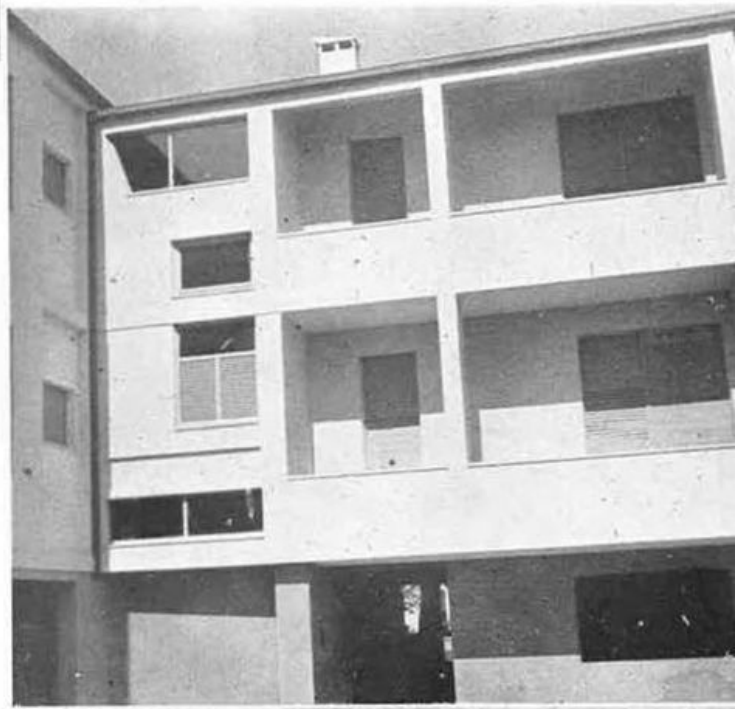
Arch. Ciro Cicconcelli



1



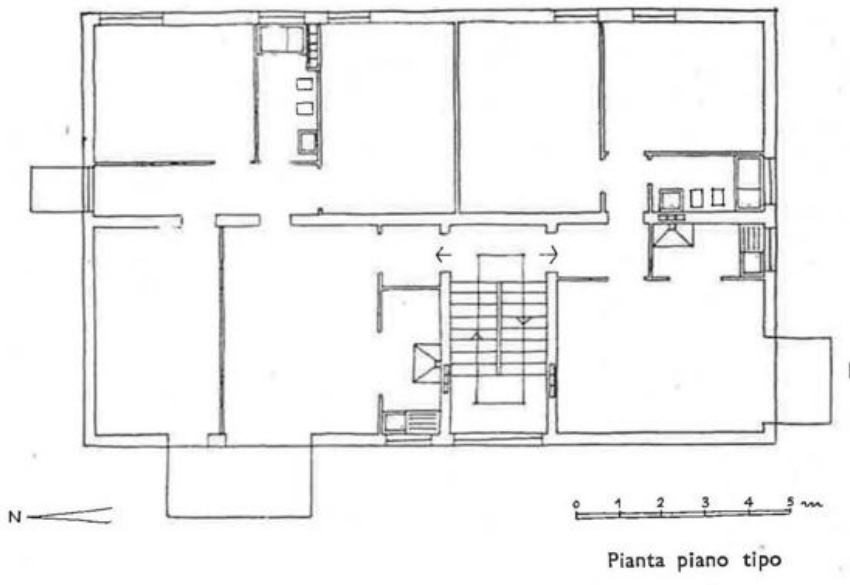
4



3



2



1-2 - **MIRANDOLA** (Modena)

3-4 - **PIANDELAGOTTI** (Modena)

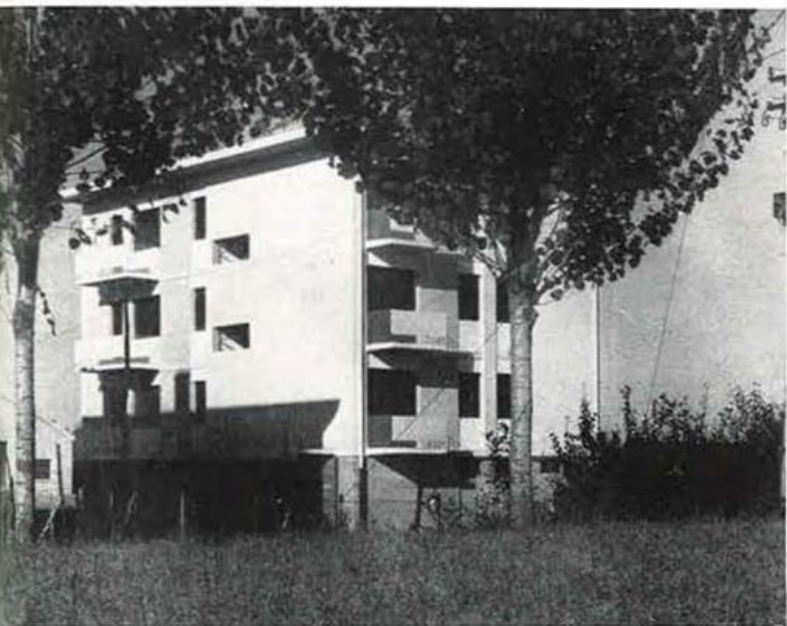
5-7 - **FIUMALBO** (Modena)

Arch. **Manfredo Vaccari Giglioli**
Ing. **Carlo Covili**

3



2



4

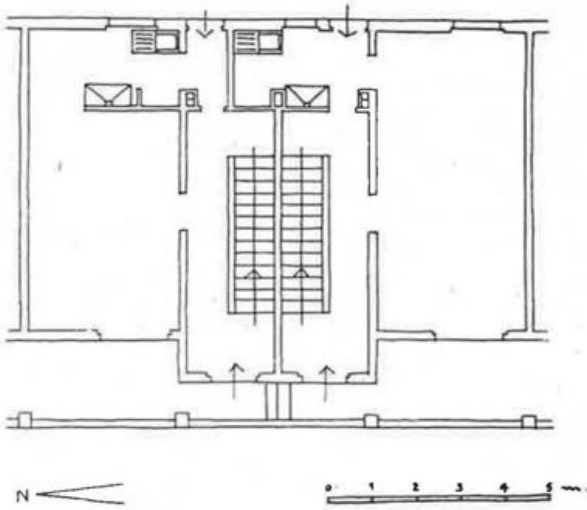


5



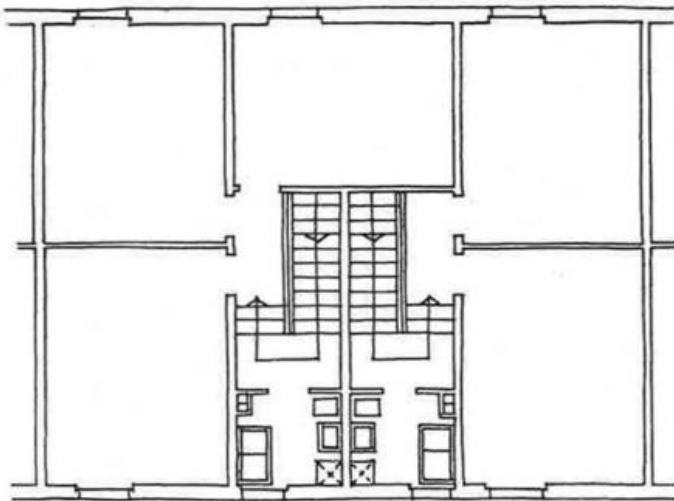
6

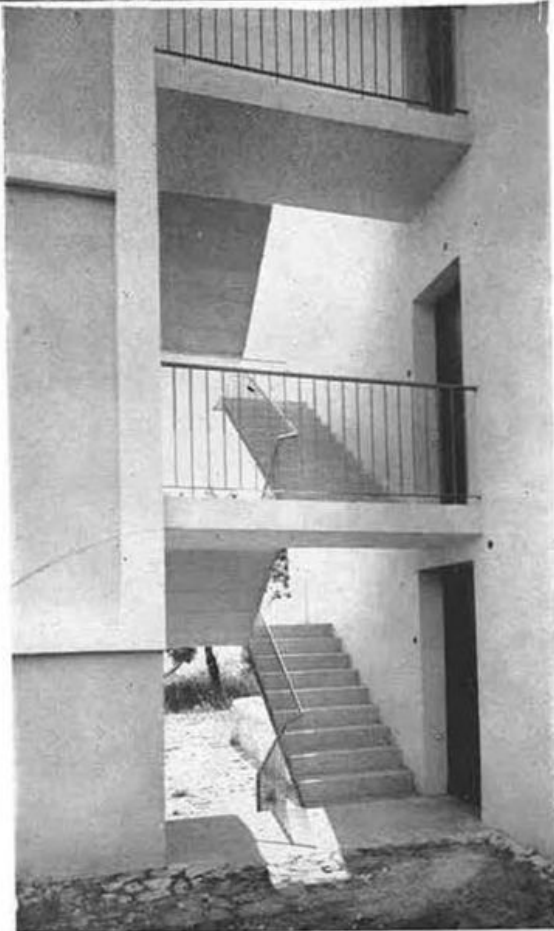


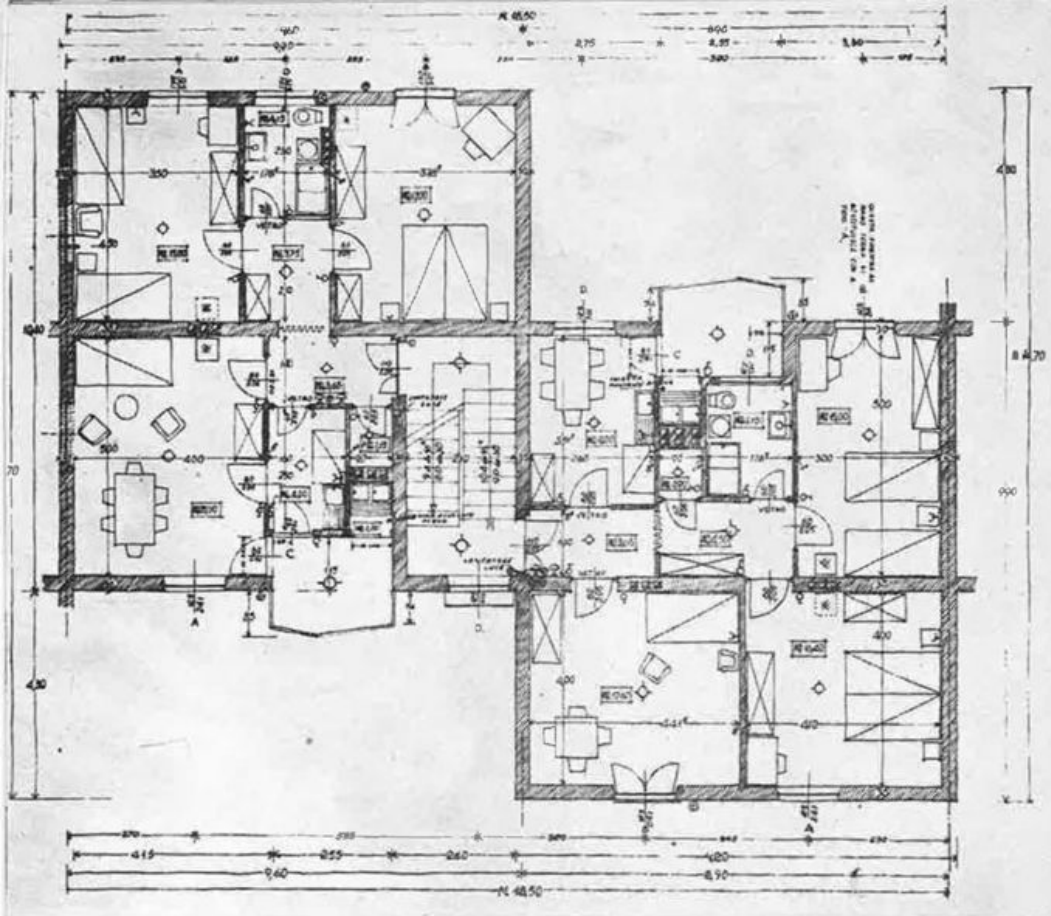


VIANO (Reggio Emilia)

Progetto della Cooperativa Architetti e Ingegneri di Reggio Emilia







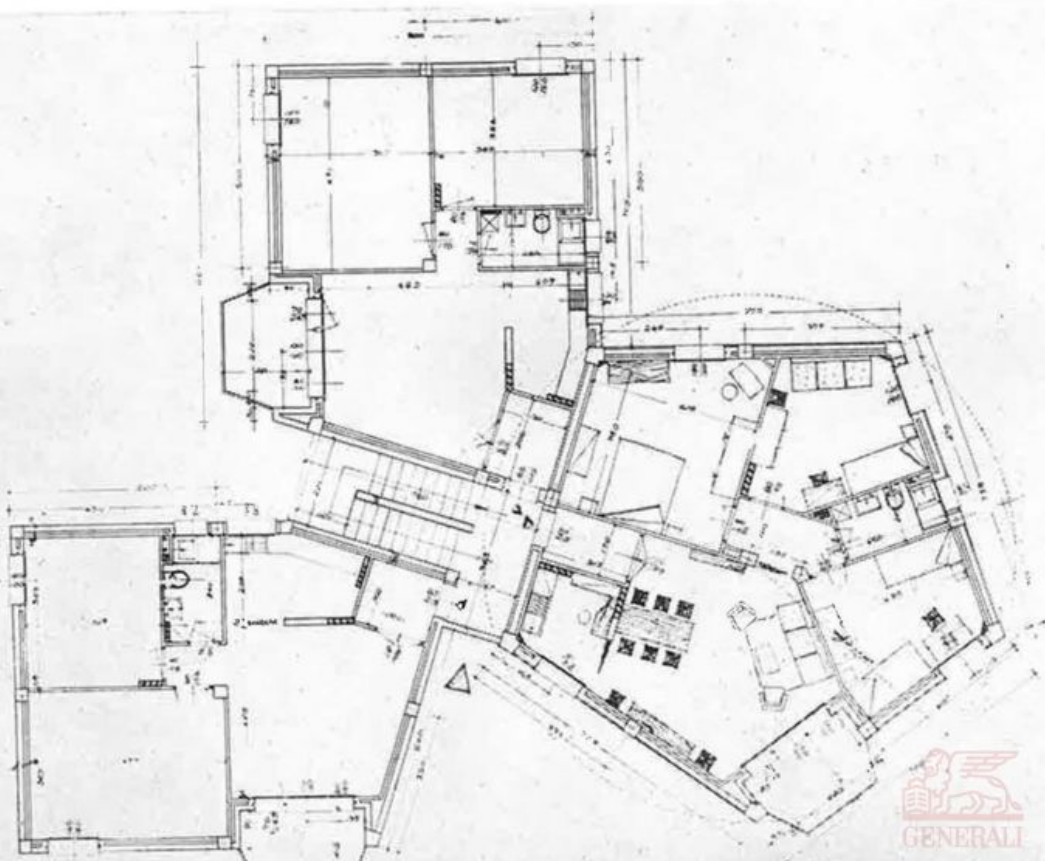
Piante alloggi-tipo

RIMINI - Unità d'abitazione al Porto

Arch. P. M. Lugli e Ing. A. Antonelli

RICCIONE

Arch. Giovanni Gandolfi



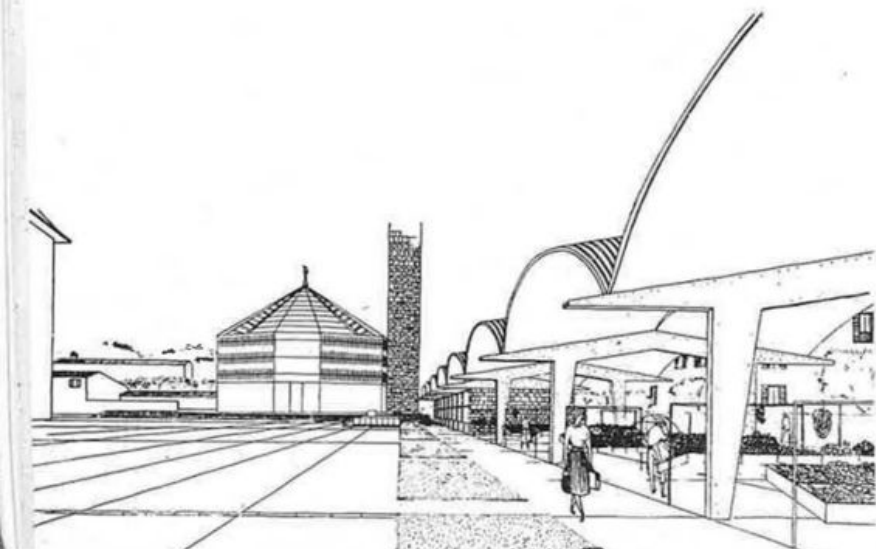
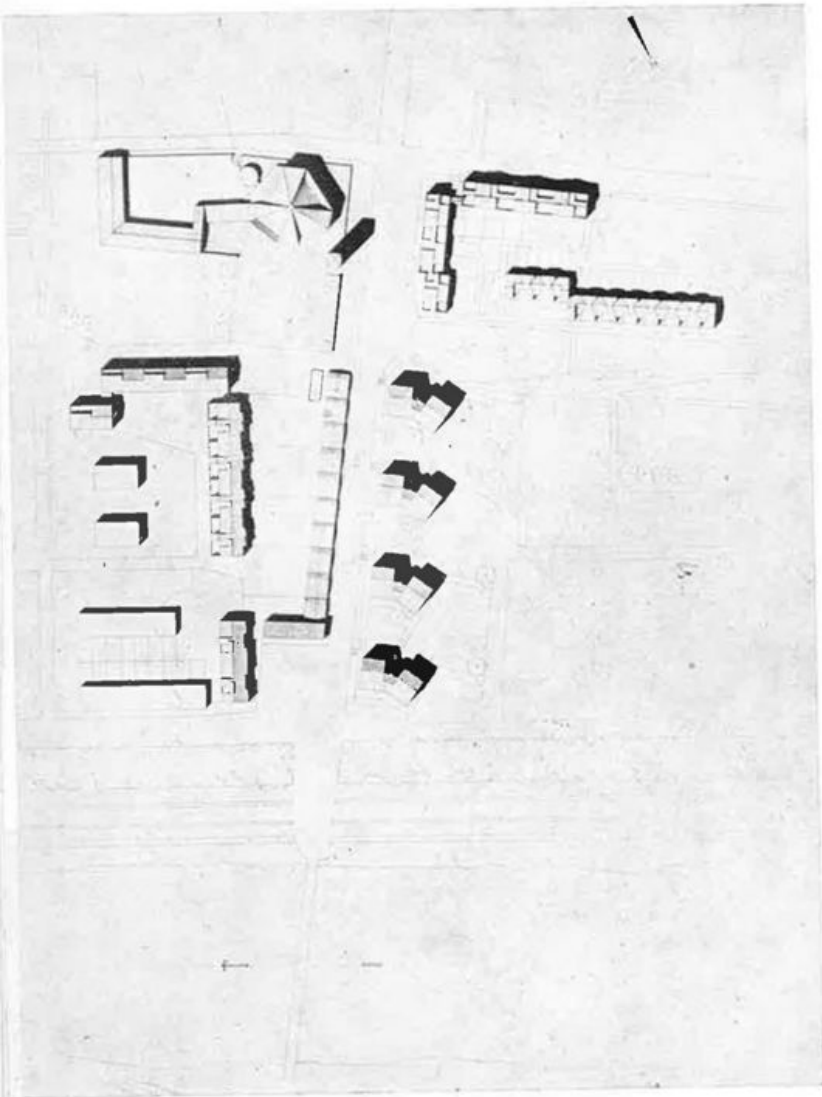
Corporate Heritage
& Historical Archive



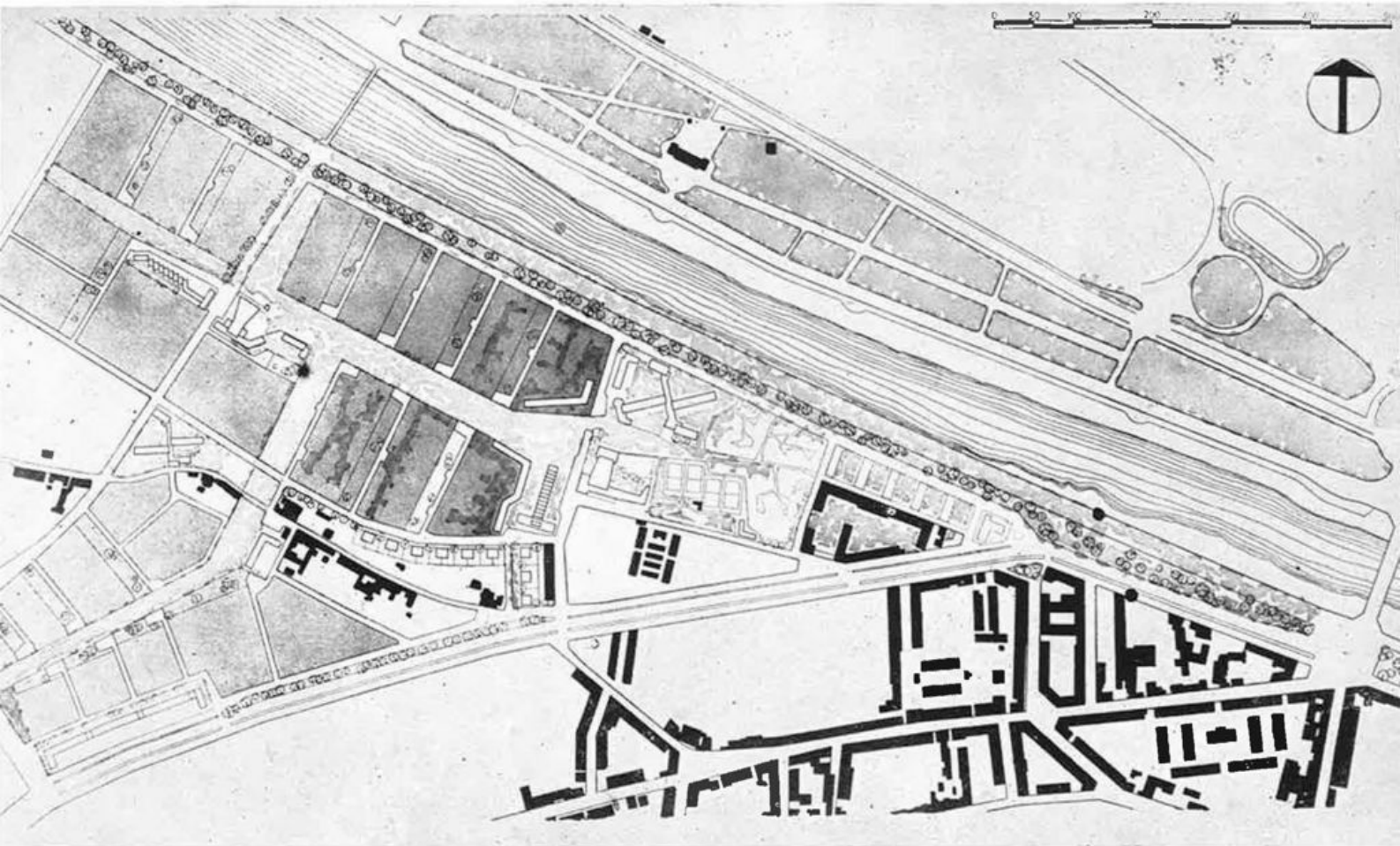
FIRENZE - Quartiere residenziale al Palazzo dei Diavoli

Il Centro del quartiere

Arch. Giuseppe Vaccaro



Corporate Heritage
& Historical Archive



FIRENZE - Quartiere residenziale al Palazzo dei Diavoli

Architetti: Pastorini, Pellegrini, Tiezzi

Ingegneri: Burci, Giuntoli, Poggi

1-3 - INCISA IN VAL D'ARNO (Firenze)

4 - SANTA CROCE (Pisa)

Arch. Mario Gambassi



Corporate Heritage
& Historical Archive



2

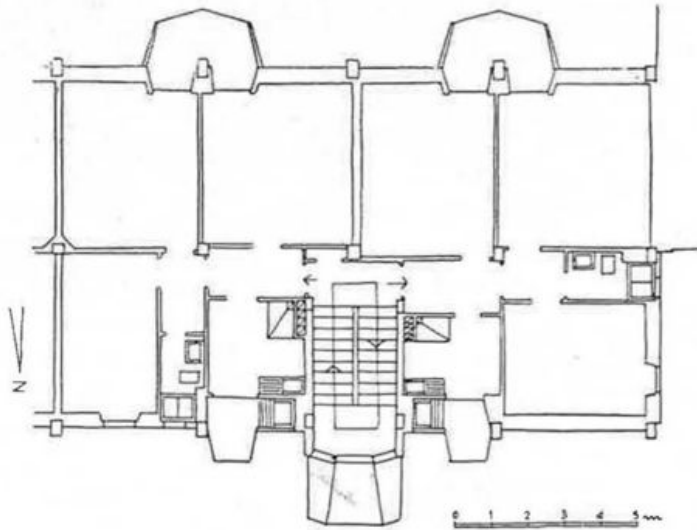
3



4

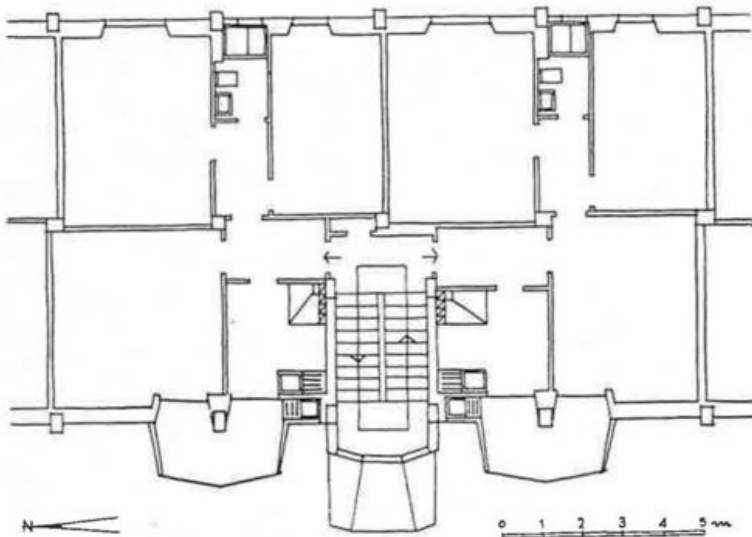


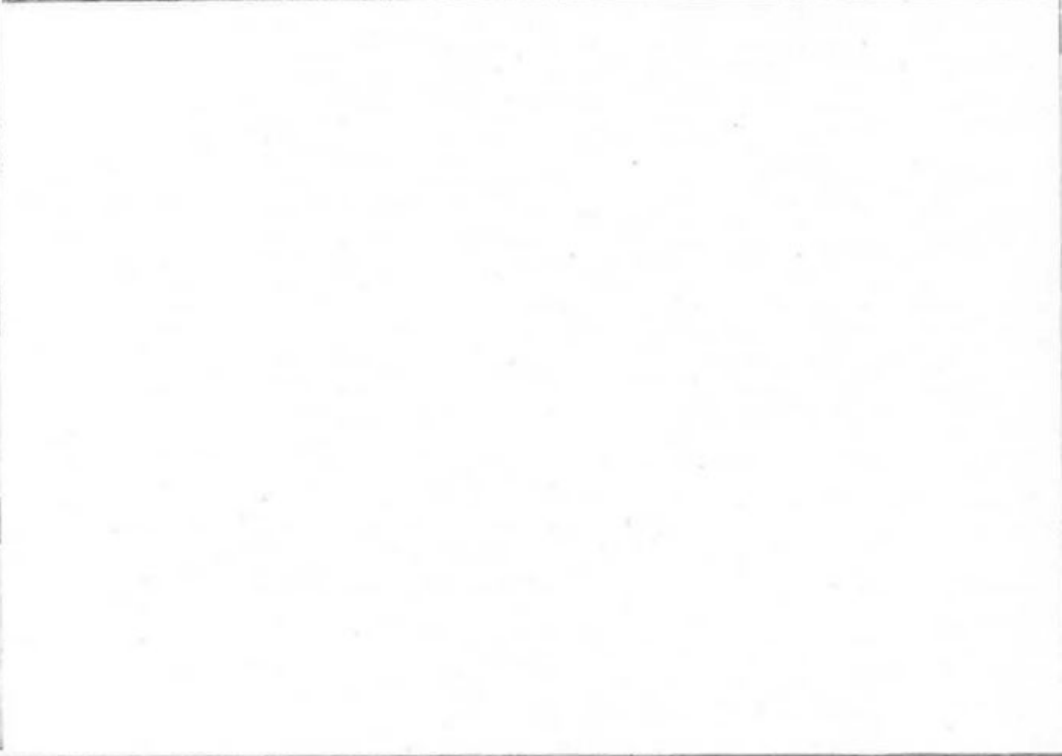
Corporate Heritage
& Historical Archive



LIVORNO

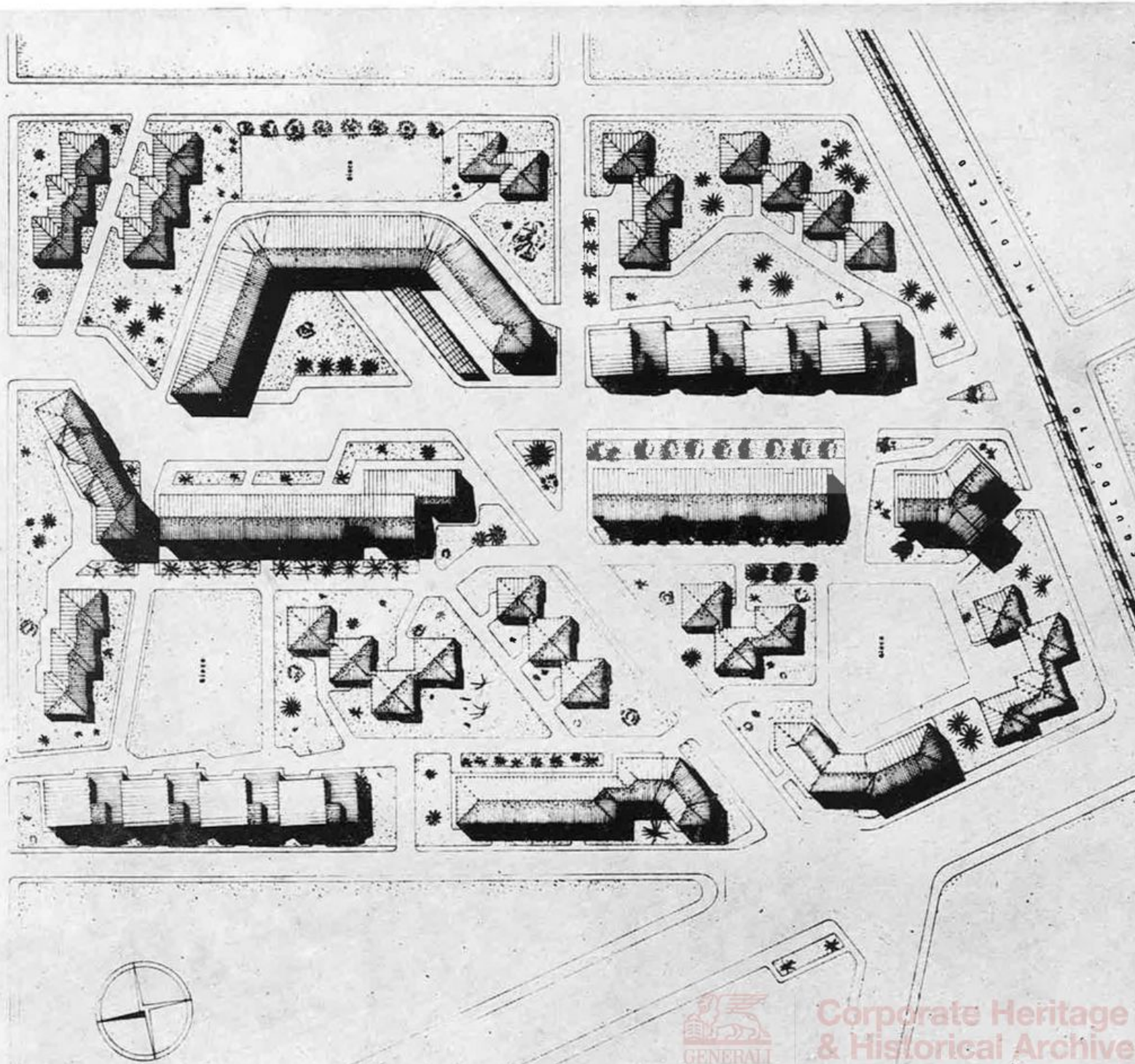
Arch. Piero Barucci

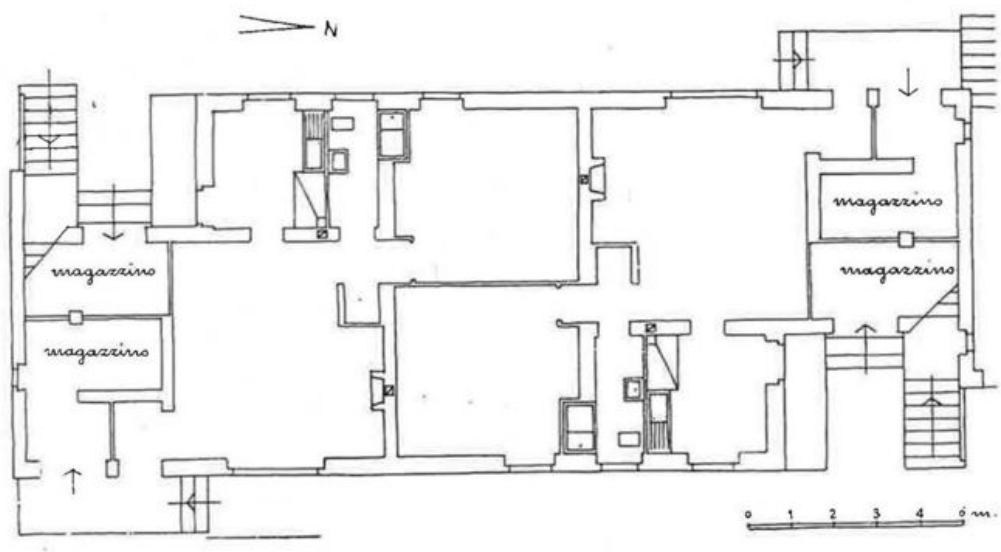




PISA - Unità d'abitazione in via Pratale

Progettazione urbanistica degli Architetti Plinio Marconi e Renato Venturi





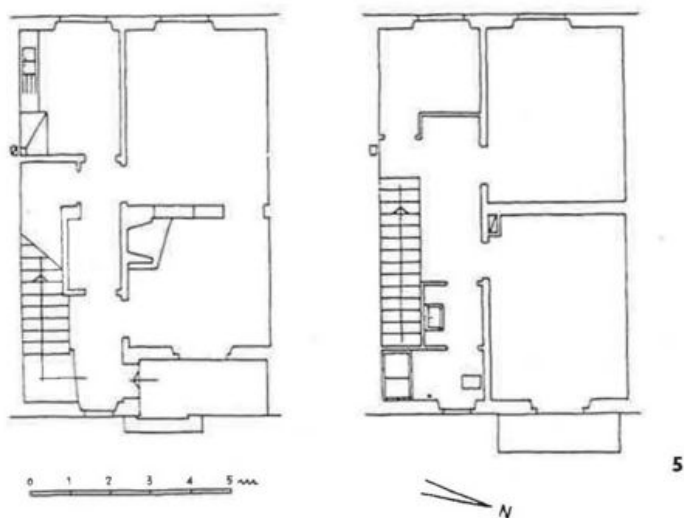
PIEVE S. STEFANO (Arezzo)
Arch. Raffaello Fagnoni





1-2 - **CHIUSI**
Arch. Francesco Tiezzi

3-5 - **EMPOLI**
Arch. Renzo Bellucci



1



2

3



4



1 - PASSO DEL TREIA (Macerata)

2 - SANSEVERINO MARCHE

Arch. Paolo Castelli

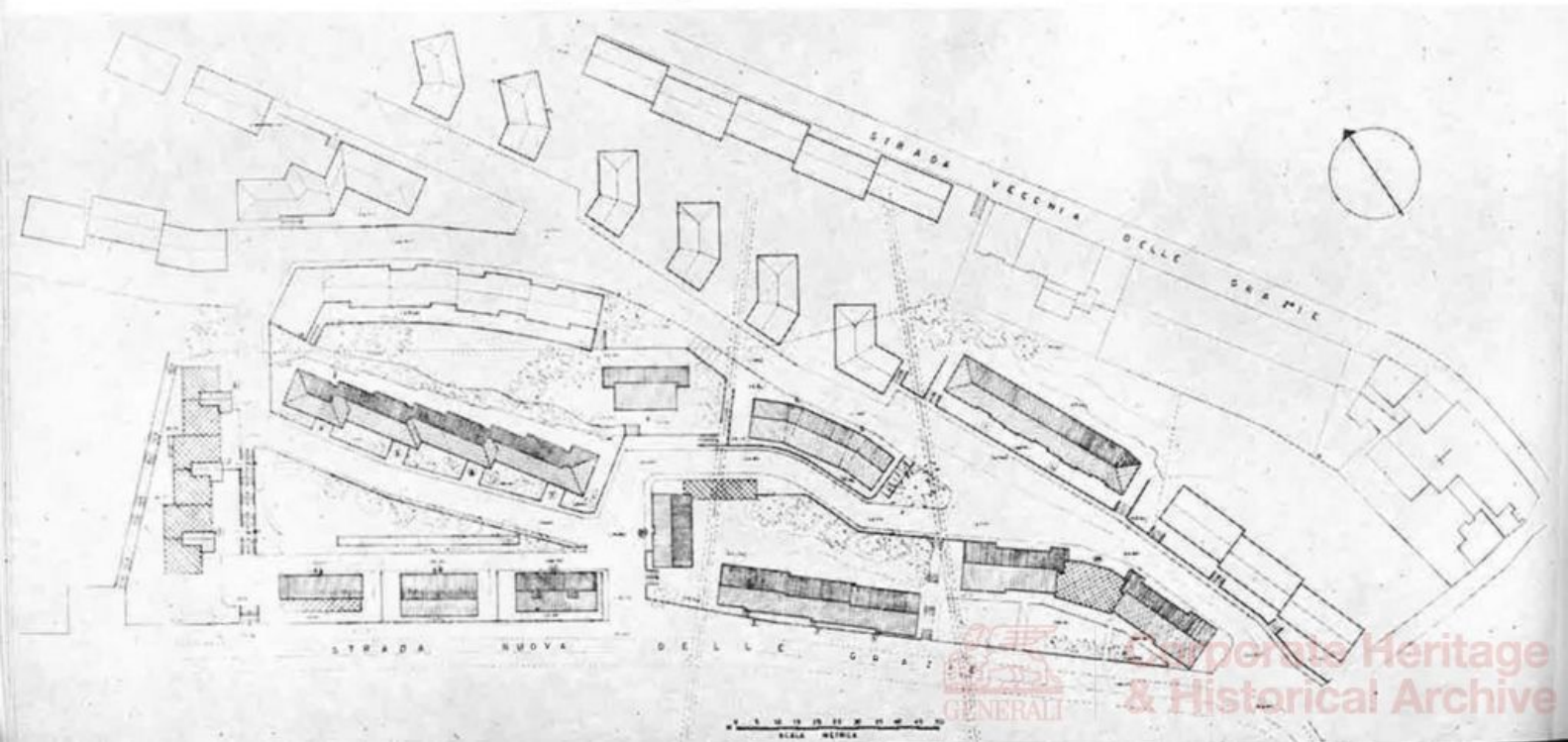
Arch. Marone Marcelletti

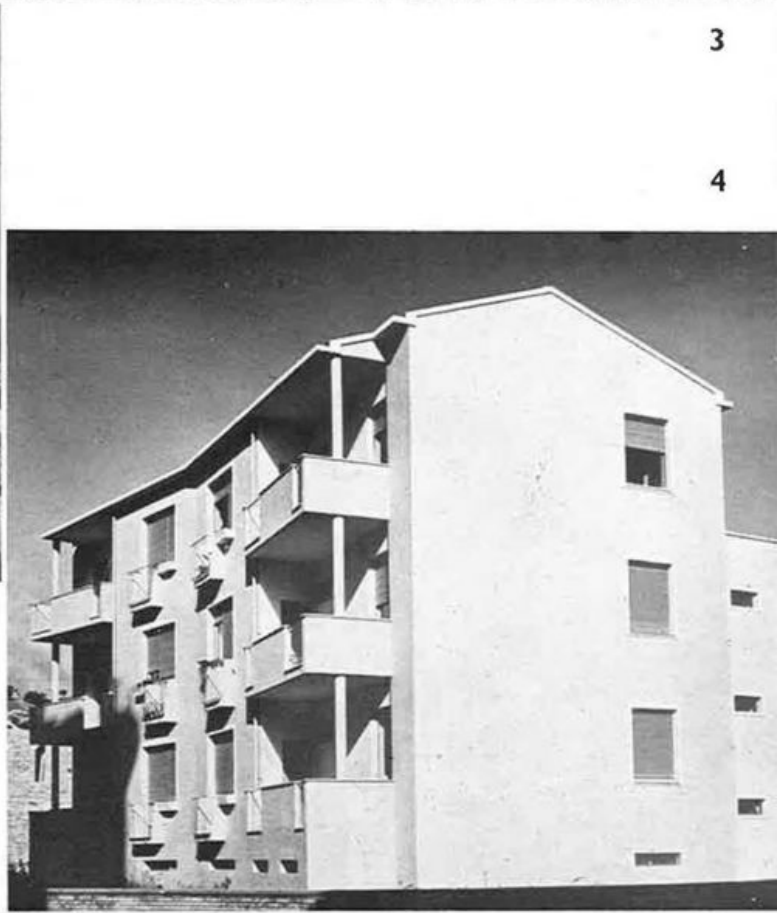
3-4 - S. BENEDETTO DEL TRONTO

Arch. Mariano Pallottini

5. - ANCONA - Unità residenziale delle Grazie

Arch. Gaetano Minnucci





3

4

ESPAÑA DE LOS AÑOS 30

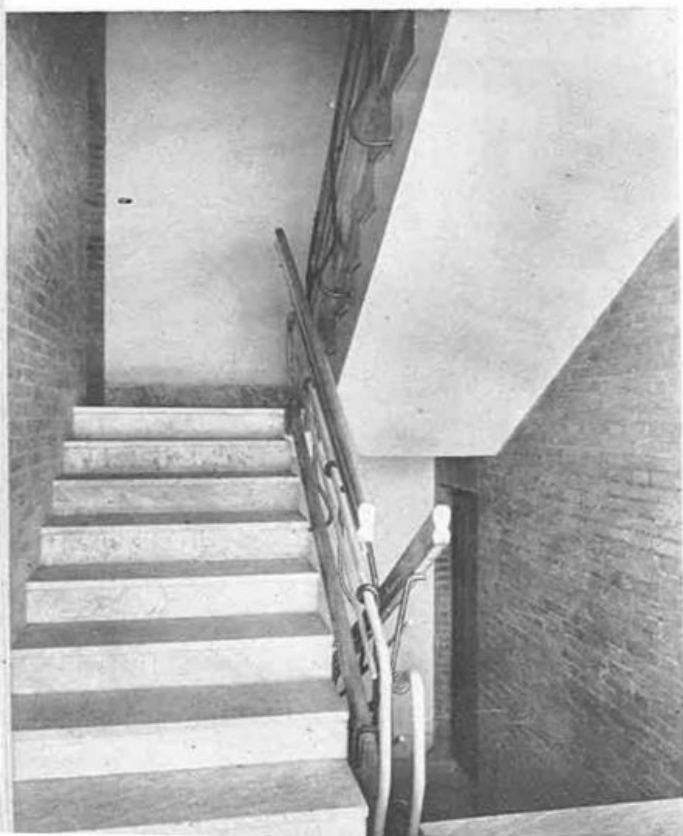
1 - CITTÀ DI CASTELLO

Arch. Giorgio Giorgi

2 - CITTÀ DELLA PIEVE (Perugia)

Arch. Tullio Dall'Anese

6

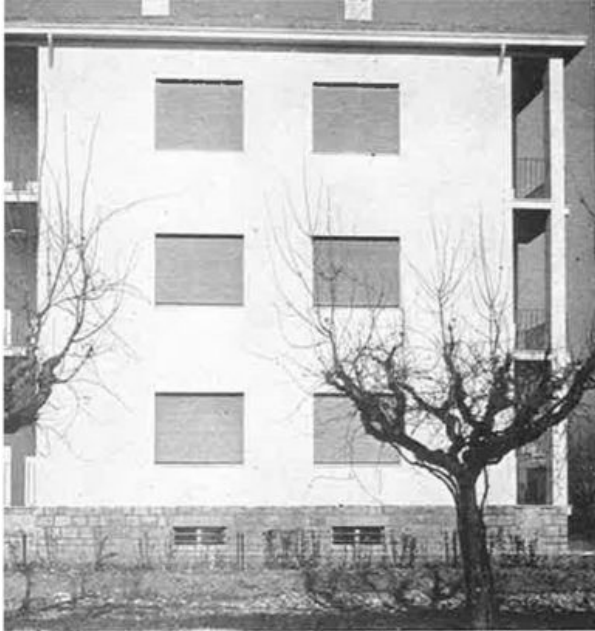


3-6 - TERNI

Arch. Mario Ridolfi



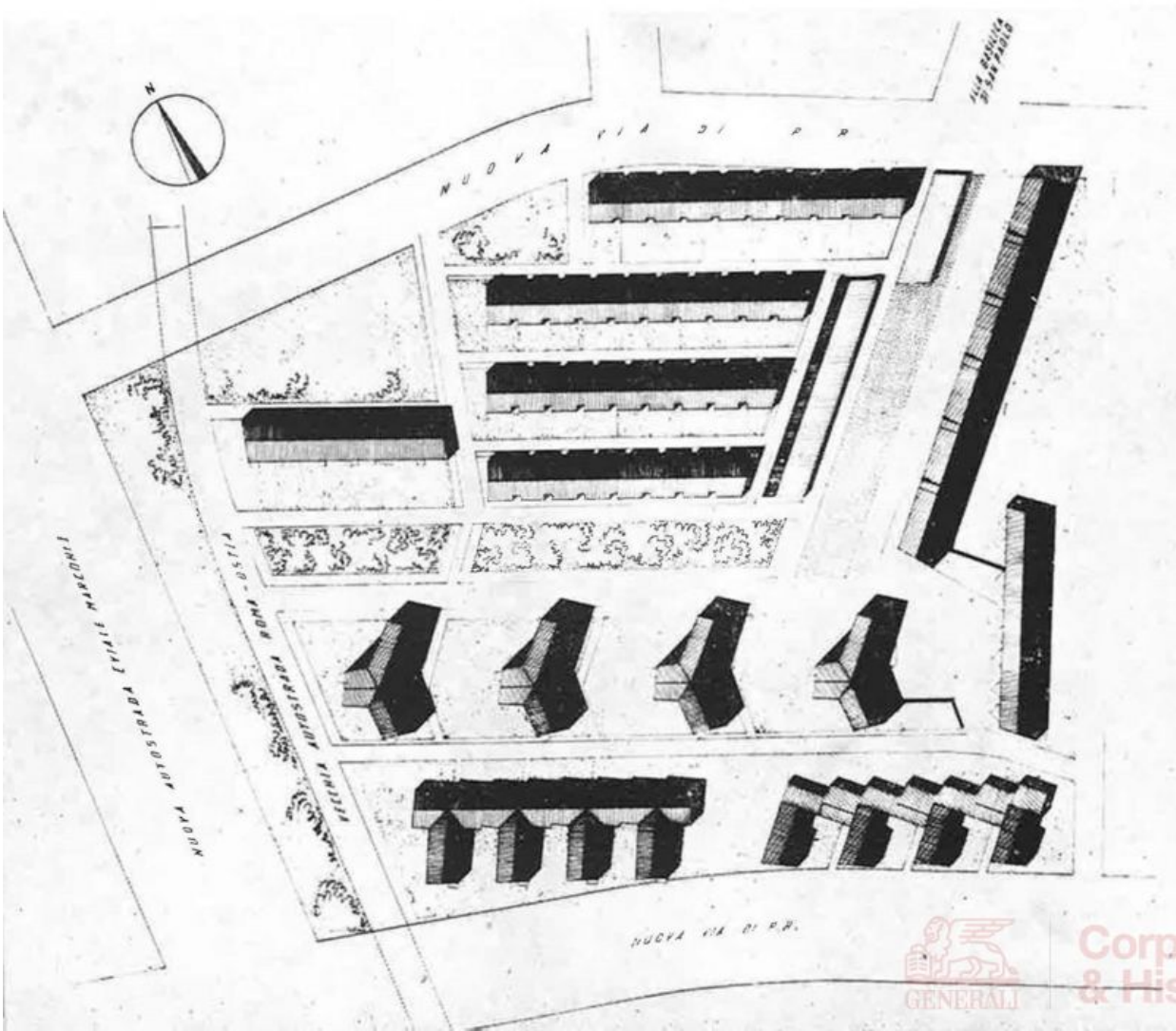
**Corporate Heritage
& Historical Archive**



ROMA - Unità di abitazione al Valco di S. Paolo

Progettazione urbanistica dell'Arch. Saverio Muratori

Planimetria generale



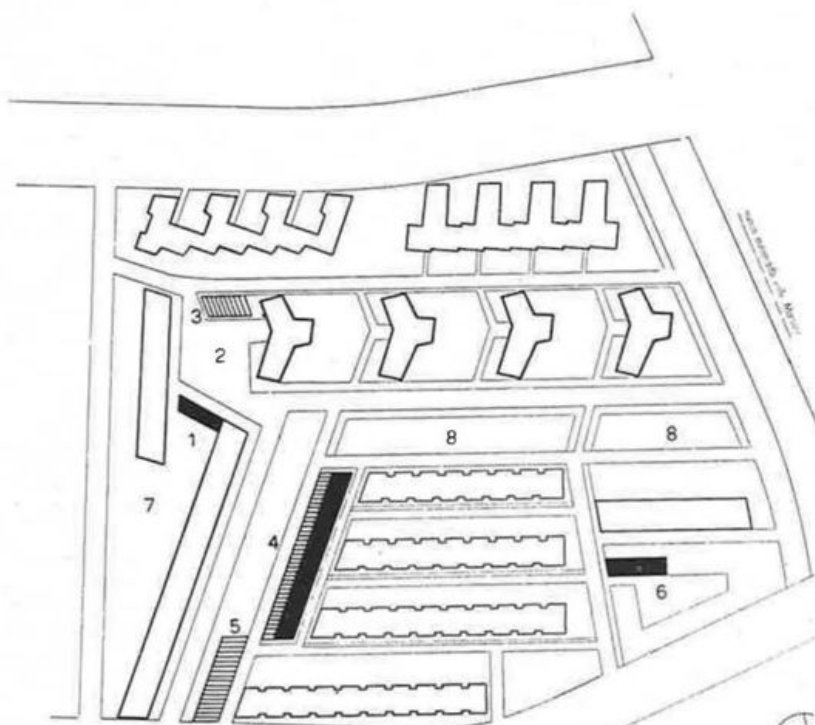




ROMA - Unità d'abitazione al Valco di San Paolo

Servizi collettivi

- 1) Botteghe artigiane
- 2) Piazzetta delle erbe
- 3) Tettoia per frutta e verdura
- 4) Negozi con pensilina
- 5) Tettoia per chioschi
- 6) Asilo nido
- 7) Gioco per ragazzi
- 8) Verde pubblico



ROMA - Unità d'abitazione al Valco di San Paolo



ROMA - Unità di abitazione al Valco di S. Paolo





ROMA - S. Paolo

I-2 - Arch. Mario De Renzi



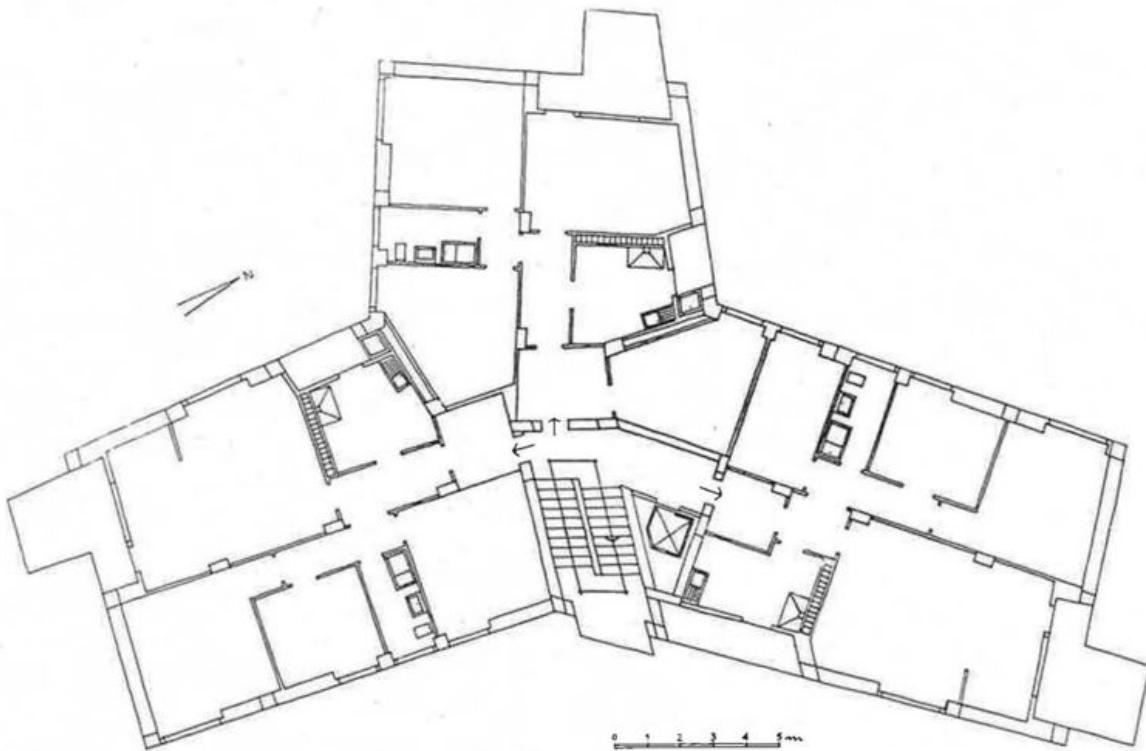
Corporate Heritage
& Historical Archive



1



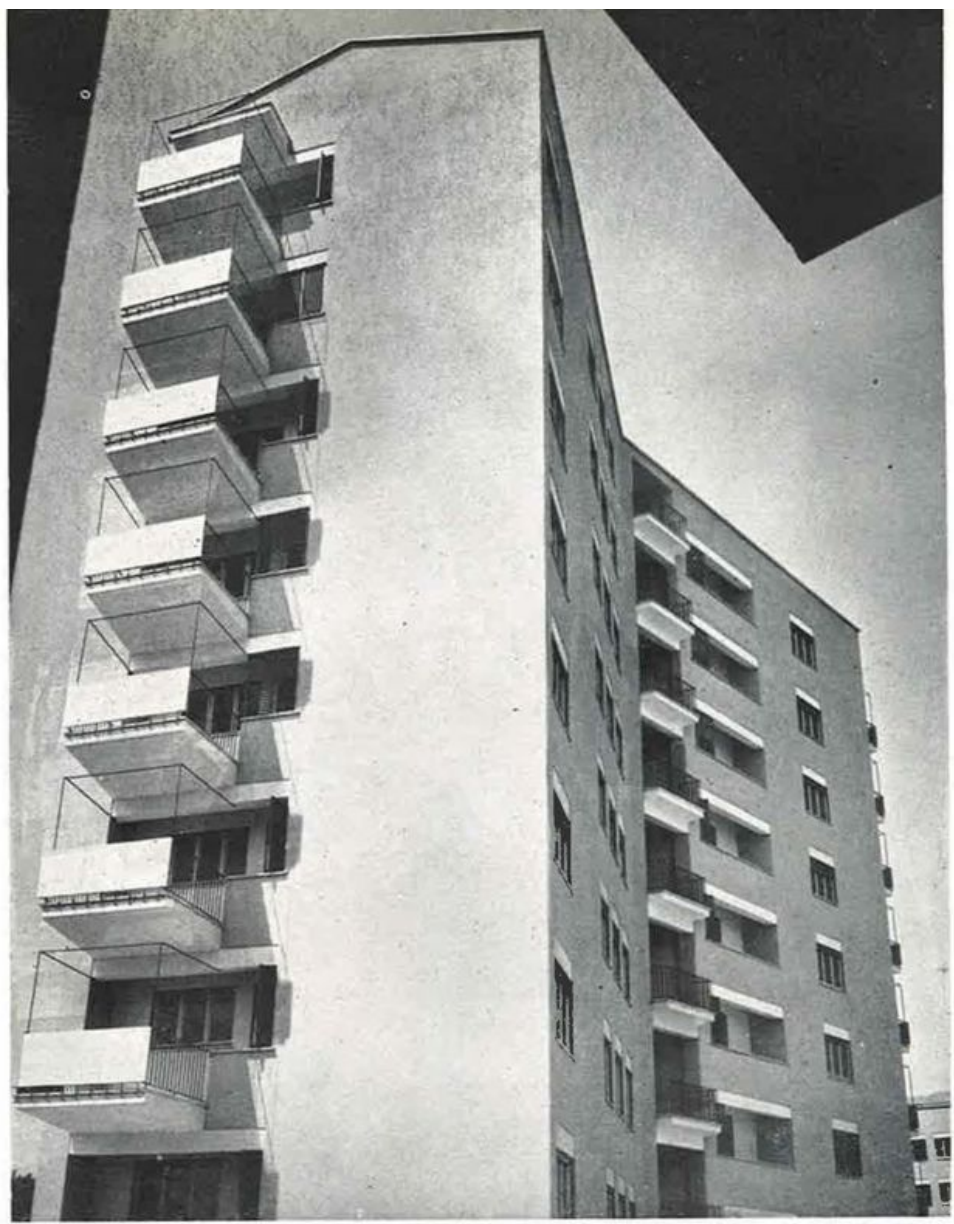
2



Pianta piano tipo

ROMA - San Paolo

Arch. Mario De Renzi





ROMA - S. Paolo.

Arch. Mario Paniconi
Arch. Giulio Pediconi



**Corporate Heritage
& Historical Archive**



Corporate Heritage
& Historical Archive

ROMA - Quartiere residenziale al Tuscolano





ROMA - Quartiere residenziale al Tuscolano

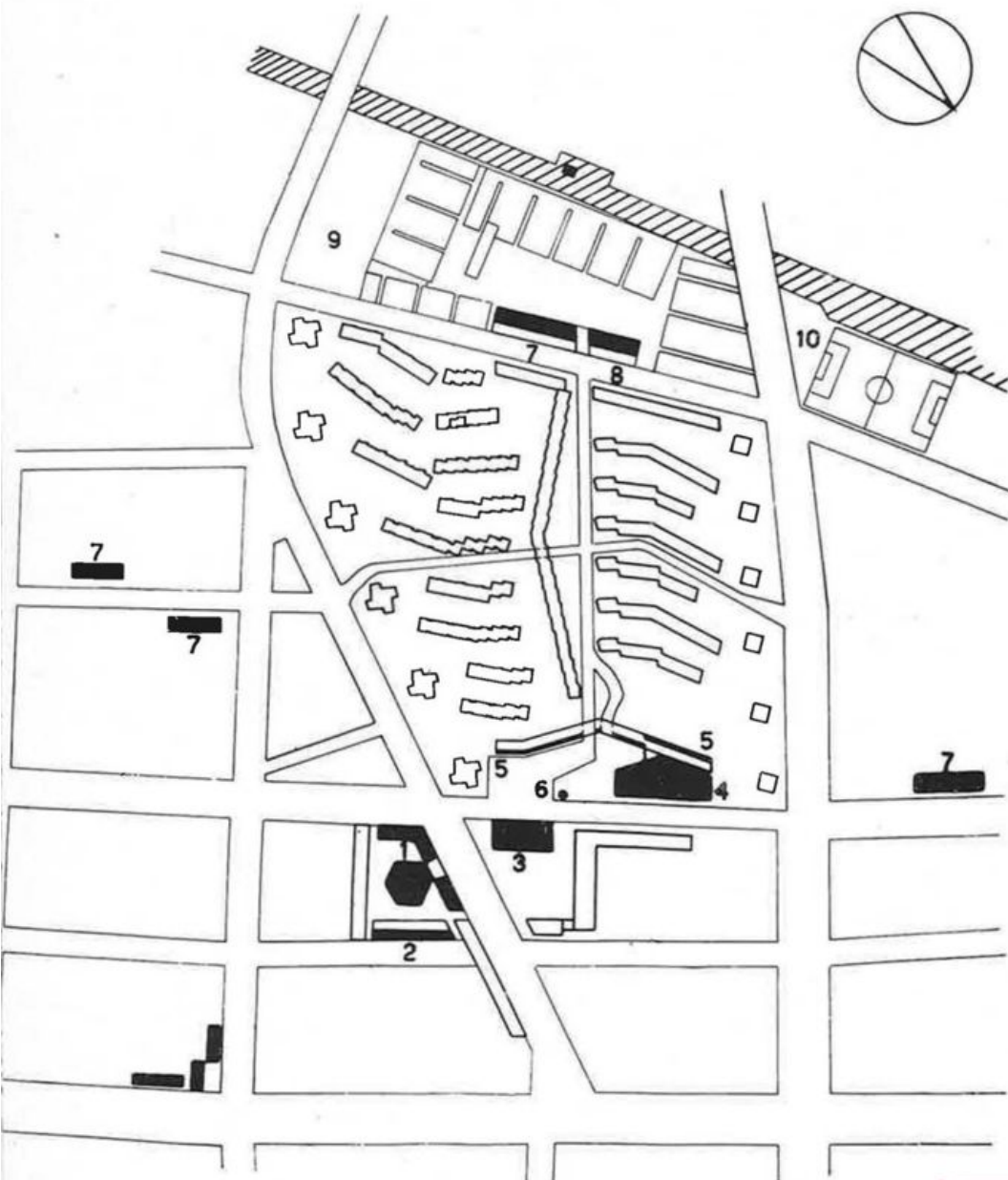


Corporate Heritage
& Historical Archive

ROMA - Quartiere residenziale al Tuscolano

Architetti autori del progetto urbanistico: Mario De Renzi - Saverio Muratori

Architetti progettisti dei fabbricati: Lucio Cambellotti - Mario De Renzi - Francesco Fariello - Adalberto Libera - Saverio Muratori - Giuseppe Perugini - Giulio Roiseco Dante Tassotti - Luigi Vagnetti



Planimetria generale dei servizi collettivi dell'intero quartiere Tuscolano

- 1) Mercato
- 2) Botteghe artigiane
- 3) Uffici
- 4) Cinema
- 5) Negozi di uso saltuario
- 6) Autorimessa sotterranea
- 7) Negozi di uso giornaliero
- 8) Autorimessa
- 9) Area destinata alla scuola elementare
- 10) Campo Sportivo

ZONA DI P.R. COMUNALE

1 2 3 4 5 6 7 8 9 10 11 12 13 14 15 16 17 18 19 20 21 22 23 24 25 26 27 28 29 30 31 32 33 34 35 36 37 38 39 40 41 42 43 44 45 46 47 48 49 50 51 52 53 54 55 56 57 58 59 60 61 62 63 64 65 66 67 68 69 70 71 72 73 74 75 76 77 78 79 80 81 82 83 84 85 86 87 88 89 90 91 92 93 94 95 96 97 98 99 100

PIAZZA

PIAZZA

PIAZZA

PIAZZA

T. B. S. C. O. R. A. T. O. R. I.

PIAZZA

PIAZZA

PIAZZA



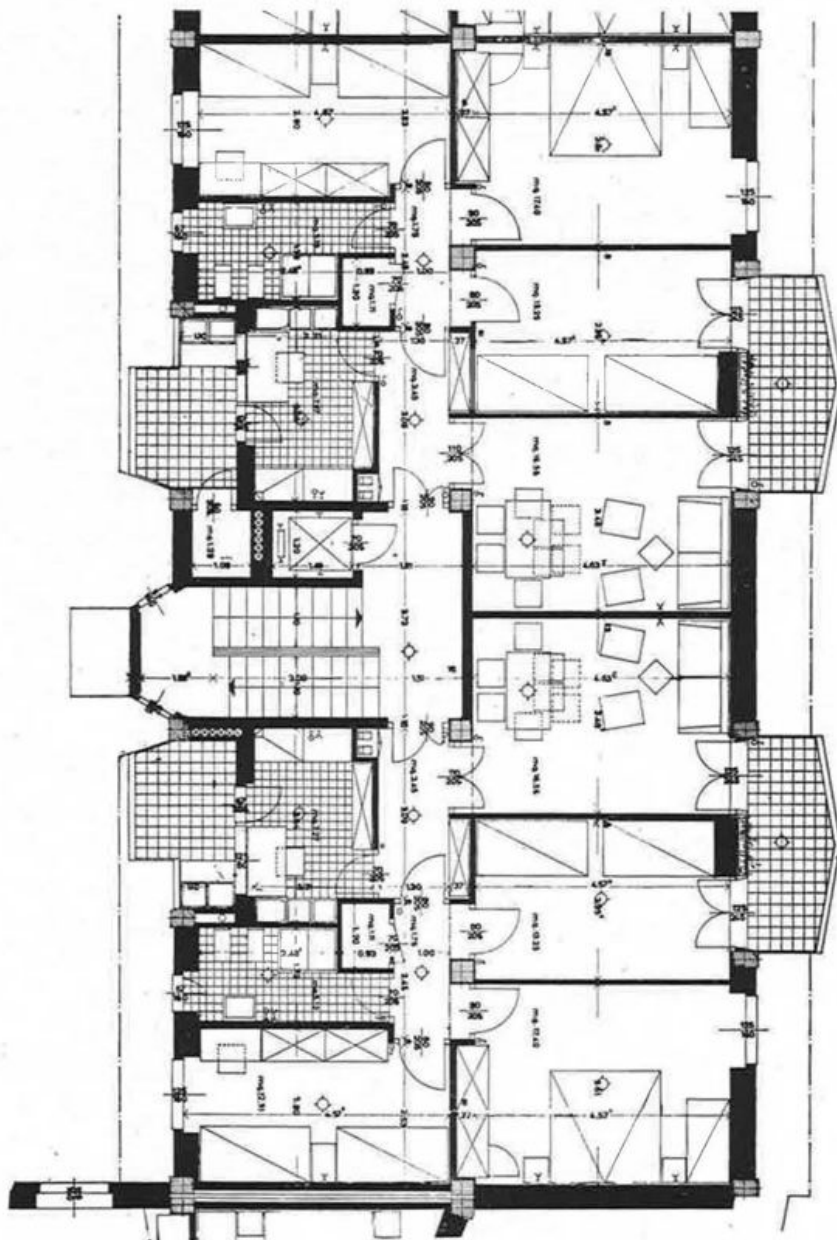
Corporate Heritage & Historical Archive

ROMA - Tuscolano

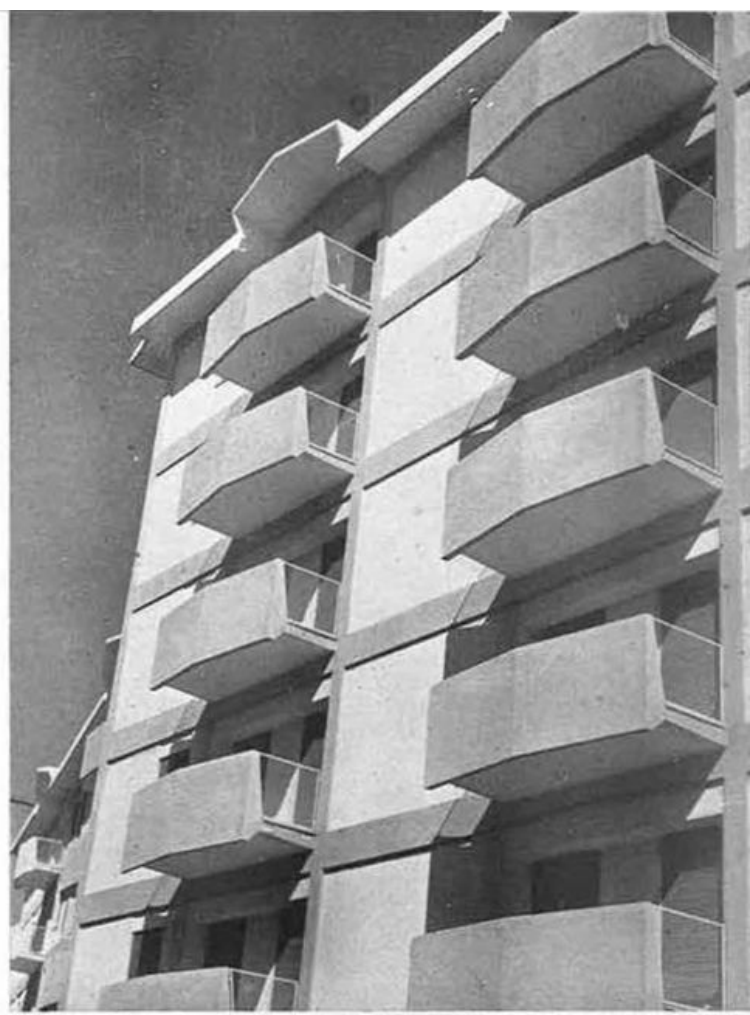
- 1 - Arch. Massimo Castellazzi
- 2-3 - Arch. Mario De Renzi
- 4 - Arch. Luigi Vagnetti
- 5 - Arch. Giuseppe Perugini

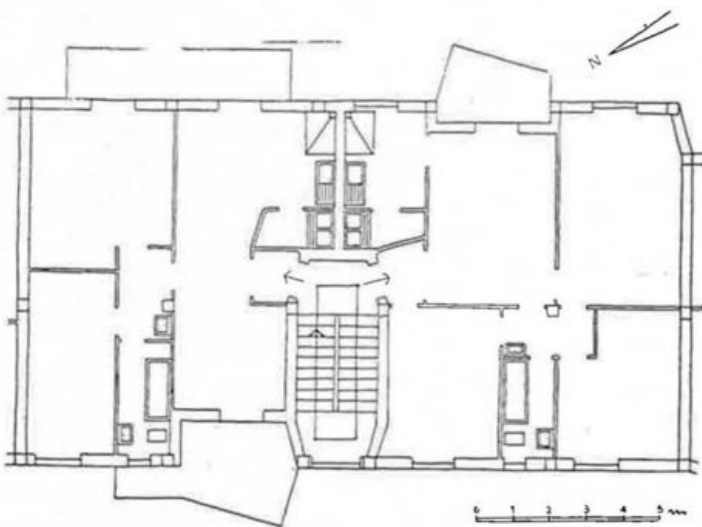
Pianta piano tipo





Pianta piano tipo





Pianta piano tipo

ROMA - Tuscolano

Arch. Alberto Gatti

164



Corporate Heritage
& Historical Archive

